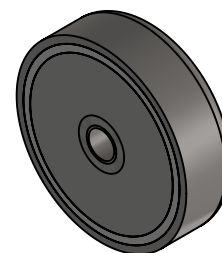
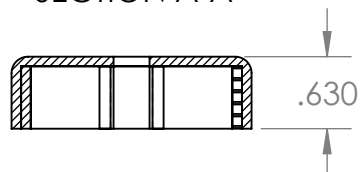


SOUTH POLARITY WARPED
BY STEEL HOUSING TO
FACE THE OTHER DIRECTION

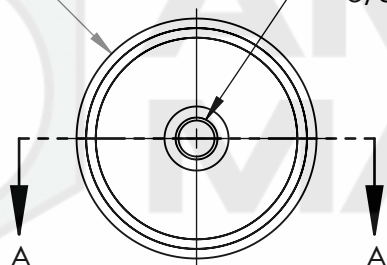


SECTION A-A



Ø 2.500

3/8-16 UNC 2B THREAD



GRADE: N42	PROPRIETARY AND CONFIDENTIAL	UNLESS OTHERWISE SPECIFIED: DIMENSIONS ARE IN INCHES TOLERANCES: FRACTIONAL ± 1/64 ANGULAR: MACH ± 1° TWO PLACE DECIMAL ± 0.01 THREE PLACE DECIMAL ± 0.005	NAME		DATE
MAGNETIZED: YES			DRAWN	LB	2/6/2012
RESIDUAL INDUCTION (Br): 12.8-13.2 KG	THE INFORMATION CONTAINED IN THIS DRAWING IS THE SOLE PROPERTY OF AMAZING MAGNETS LLC. ANY REPRODUCTION IN PART OR AS A WHOLE WITHOUT THE WRITTEN PERMISSION OF AMAZING MAGNETS LLC IS PROHIBITED.	MATERIAL: NdFeB	CHECKED	TB	2/6/2012
COERCIVE FORCE (Hc): ≥ 11.4 KOe			COMMENTS: ALL EDGES BROKEN 0.025 MAX		
INTRINSIC COERCIVE FORCE (Hci): ≥ 12.0 KOe					
MAX. ENERGY PRODUCT (BHmax): 40-43 MGOe	CAGE CODE 4R1R7	FINISH: Ni-Cu-Ni (silver in Color)			
MAX OPERATIONAL TEMP: 80C / 176F		DO NOT SCALE DRAWING			



**AMAZING
MAGNETS®**

TITLE: CUPi2500

SIZE A	DWG. NO. CUPi2500-SPECS	REV 0
------------------	----------------------------	-----------------

SCALE 1 : 2

5

4

3

2

1