

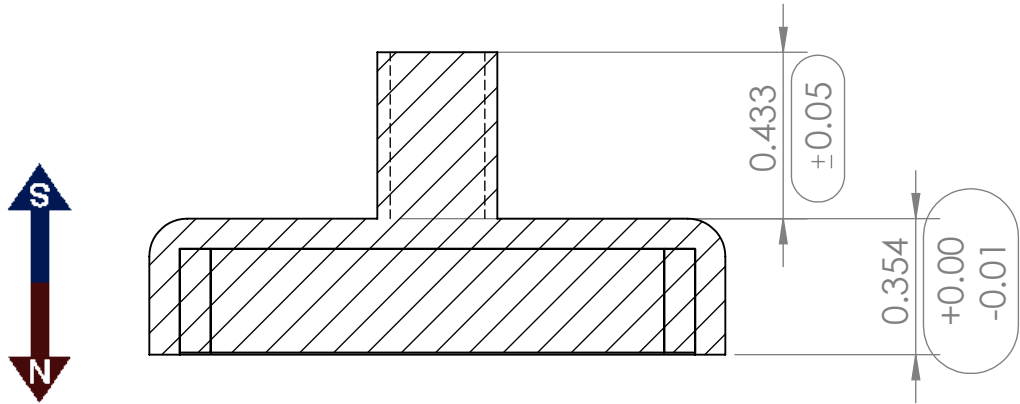
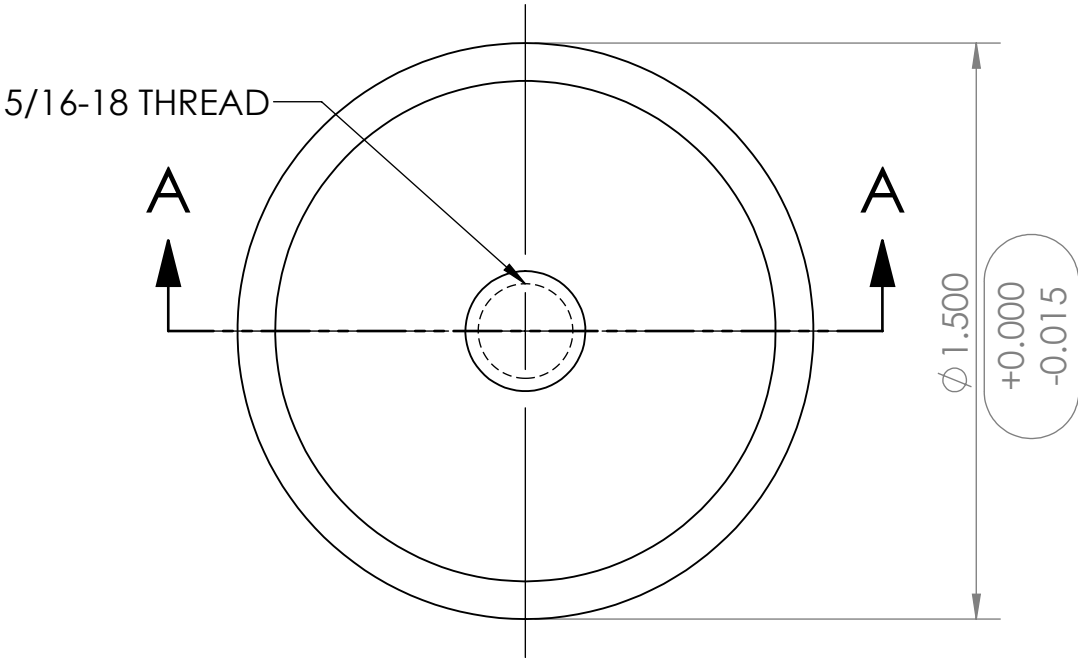
4

3

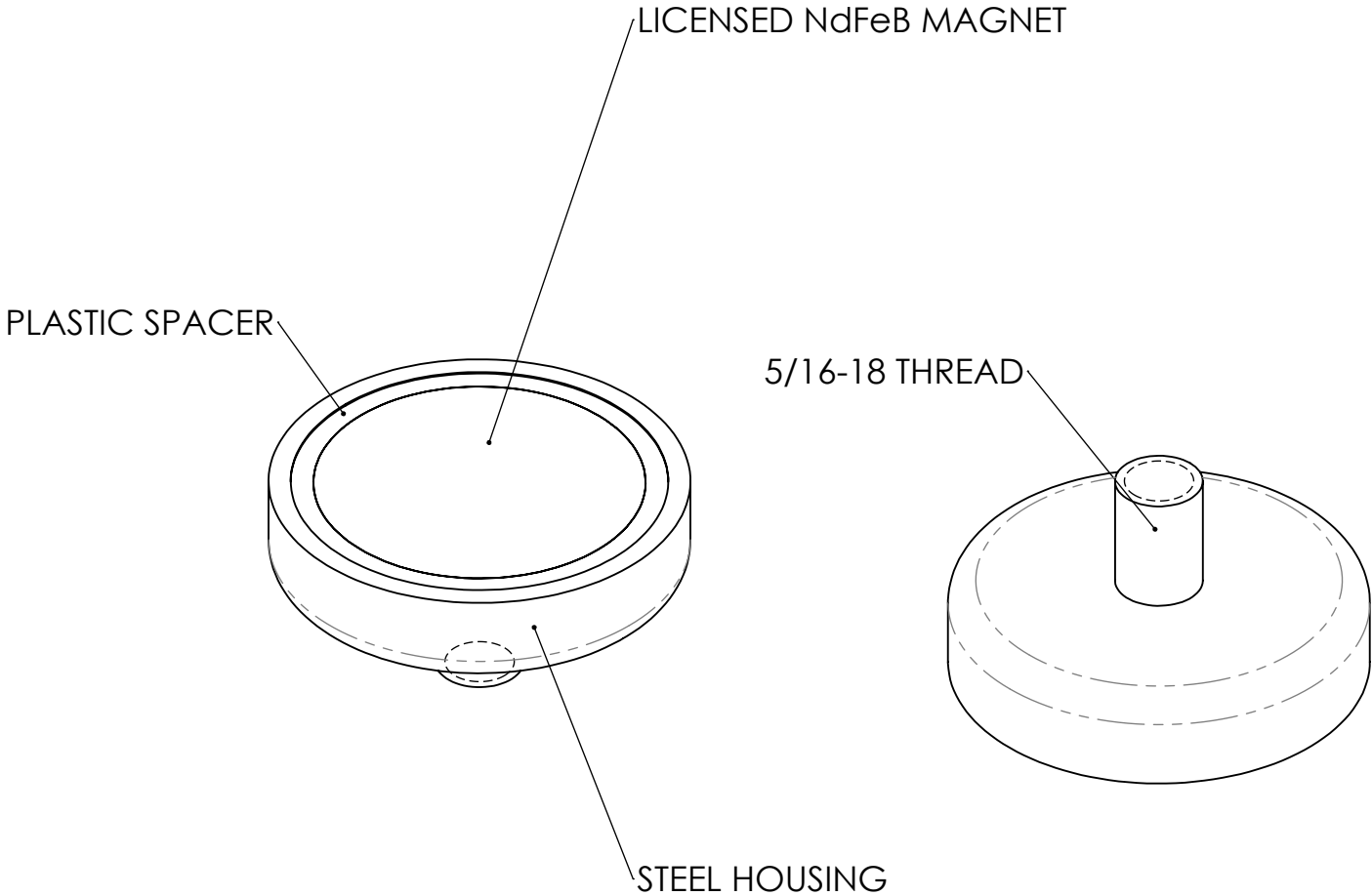
2

1

REVISIONS				
ZONE	REV.	DESCRIPTION	DATE	APPROVED
	A	INITIAL RELEASE	7/24/2020	CW




SECTION A-A



CONDITIONS	MAGNETIC PROPERTIES
1. PART IS TO BE FREE OF SCRATCHES, DENTS, AND DEFECTS CAUSED DURING PRODUCTION. 2. PART IS TO BE FREE OF GREASE, AND DISCOLORATION ON ALL SURFACES.	MATERIAL: NdFeB GRADE: N40 COATING: NICKEL (Ni-Cu-Ni) MAGNETIZED: YES RESIDUAL INDUCTION (Br): 12.5-12.8 KG COERCIVE FORCE (HcB): ≥11.4 KOe INTRINSIC COERCIVE FORCE (Hci): ≥12.0 KOe MAXIMUM ENERGY PRODUCT (Bhmax): 38-41 MGOe MAXIMUM OPERATIONAL TEMPERATURE: 80C / 176F

PROPRIETARY AND CONFIDENTIAL	UNLESS OTHERWISE SPECIFIED	NAME	DATE
THE INFORMATION CONTAINED IN THIS DRAWING IS THE SOLE PROPERTY OF AMAZING MAGNETS LLC. ANY REPRODUCTION IN PART OR AS A WHOLE WITHOUT THE WRITTEN PERMISSION OF AMAZING MAGNETS LLC IS PROHIBITED.	DIMENSIONS ARE IN INCHES TOLERANCES: FRACTIONAL ± 1/64 ANGULAR: MACH ± 1° TWO PLACE DECIMAL ± 0.01 THREE PLACE DECIMAL ± 0.004	DRAWN	SW 7/17/2020
		CHECKED	CW 7/24/2020
		COMMENTS: ALL EDGES BROKEN 0.025" MAX	
CAGE CODE <b>4R1R7</b>	DO NOT SCALE DRAWING		

 <b>AMAZING MAGNETS®</b>		
TITLE: CUPM1500		
SIZE <b>B</b>	DWG. NO. CUPM1500-SPECS	REV <b>A</b>

4

3

2

1