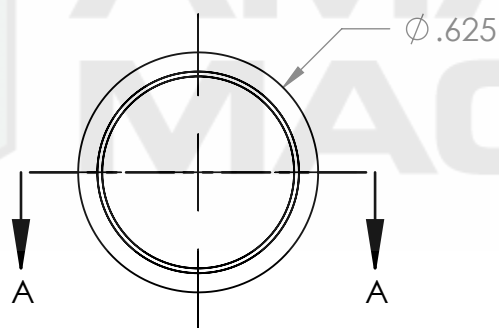
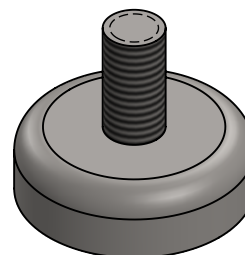
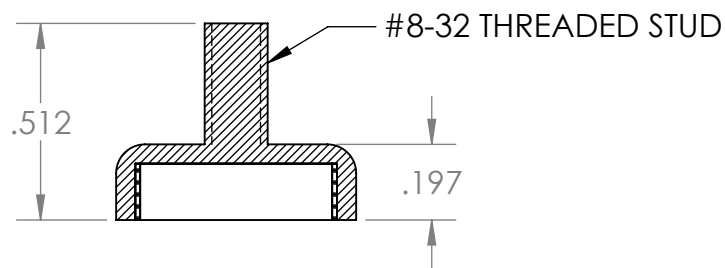


SOUTH POLARITY WARPED
BY STEEL HOUSING TO
FACE THE OTHER DIRECTION



SECTION A-A



AMAZING
MAGNETS®

GRADE: N40	PROPRIETARY AND CONFIDENTIAL	UNLESS OTHERWISE SPECIFIED: DIMENSIONS ARE IN INCHES TOLERANCES: FRACTIONAL ± 1/64 ANGULAR: MACH ± 1° TWO PLACE DECIMAL ± 0.01 THREE PLACE DECIMAL ± 0.005	NAME		DATE
MAGNETIZED: YES			DRAWN	LB	1/24/2012
RESIDUAL INDUCTION (Br): 12.5-12.8 KG	THE INFORMATION CONTAINED IN THIS DRAWING IS THE SOLE PROPERTY OF AMAZING MAGNETS LLC. ANY REPRODUCTION IN PART OR AS A WHOLE WITHOUT THE WRITTEN PERMISSION OF AMAZING MAGNETS LLC IS PROHIBITED.	MATERIAL: NdFeB	CHECKED	TB	1/24/2012
COERCIVE FORCE (Hc): ≥ 11.4 KOe			COMMENTS: ALL EDGES BROKEN 0.025 MAX		
INTRINSIC COERCIVE FORCE (Hci): ≥ 12.0 KOe					
MAX. ENERGY PRODUCT (BHmax): 38-41 MGOe					
MAX OPERATIONAL TEMP: 80C / 176F	CAGE CODE 4R1R7	FINISH: Ni-Cu-Ni (silver in Color)			
		DO NOT SCALE DRAWING			



**AMAZING
MAGNETS®**

TITLE: CUPM625		
SIZE A	DWG. NO. CUPM625-SPECS	REV 0
SCALE 2 : 1		

5

4

3

2

1