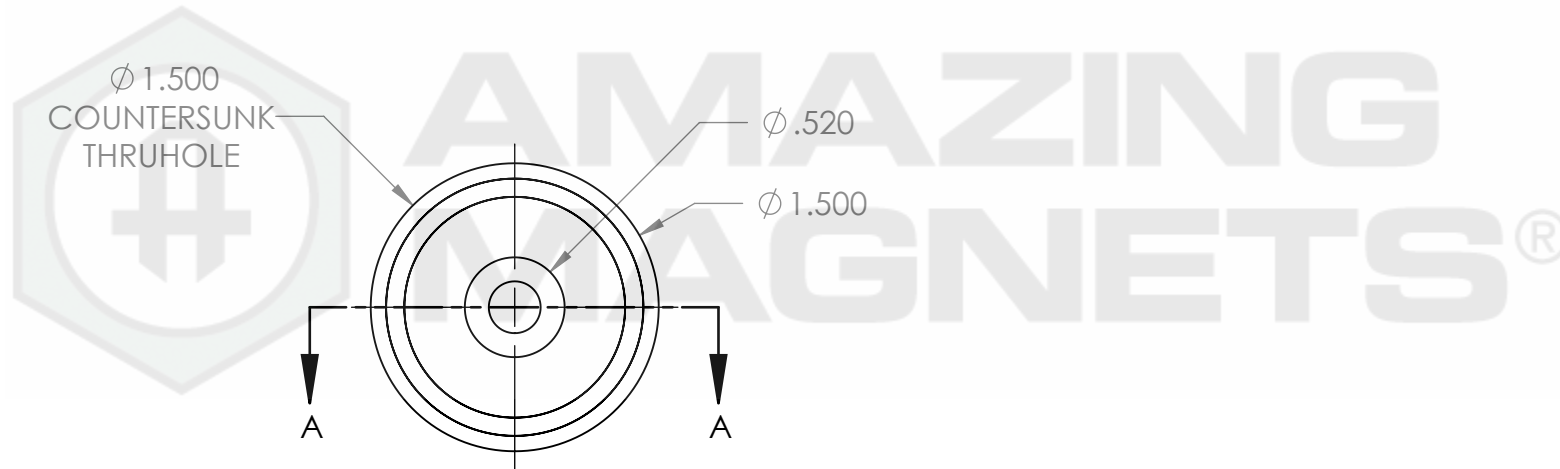
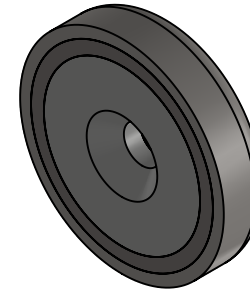
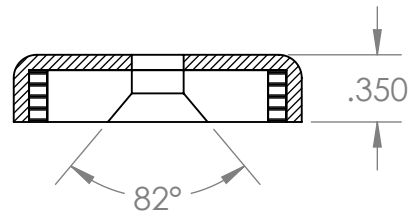


SOUTH POLARITY WARPED
BY STEEL HOUSING TO
FACE THE OTHER DIRECTION



SECTION A-A




| |
|---|
| GRADE: N40 |
| MAGNETIZED: YES |
| RESIDUAL INDUCTION (Br): 12.5-12.8 KG |
| COERCIVE FORCE (Hc): ≥ 11.4 KOe |
| INTRINSIC COERCIVE FORCE (Hci): ≥ 12.0 KOe |
| MAX. ENERGY PRODUCT (BHmax): 38-41 MGOe |
| MAX OPERATIONAL TEMP: 80C / 176F |

| |
|--|
| PROPRIETARY AND CONFIDENTIAL |
| THE INFORMATION CONTAINED IN THIS DRAWING IS THE SOLE PROPERTY OF AMAZING MAGNETS LLC. ANY REPRODUCTION IN PART OR AS A WHOLE WITHOUT THE WRITTEN PERMISSION OF AMAZING MAGNETS LLC IS PROHIBITED. |
| CAGE CODE 4R1R7 |

| |
|---|
| UNLESS OTHERWISE SPECIFIED: |
| DIMENSIONS ARE IN INCHES TOLERANCES: FRACTIONAL ± 1/64 ANGULAR: MACH ± 1° TWO PLACE DECIMAL ± 0.01 THREE PLACE DECIMAL ± 0.005 |
| MATERIAL: NdFeB |
| FINISH: Ni-Cu-Ni (silver in Color) |
| DO NOT SCALE DRAWING |

| | |
|--|-----------|
| NAME | DATE |
| DRAWN LB | 1/25/2012 |
| CHECKED TB | 1/25/2012 |
| COMMENTS: ALL EDGES BROKEN 0.025 MAX | |



**AMAZING
MAGNETS®**

TITLE: **CUPT1500**

| | | |
|------------------|----------------------------|-----------------|
| SIZE A | DWG. NO. CUPT1500-SPECS | REV 0 |
|------------------|----------------------------|-----------------|

SCALE 1 : 1

5

4

3

2

1