

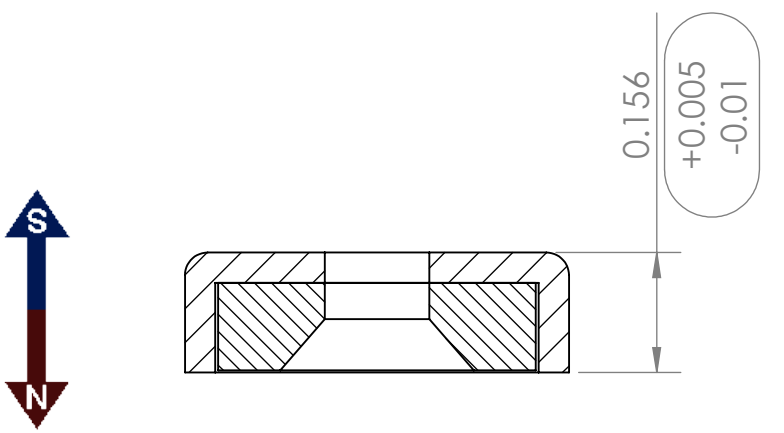
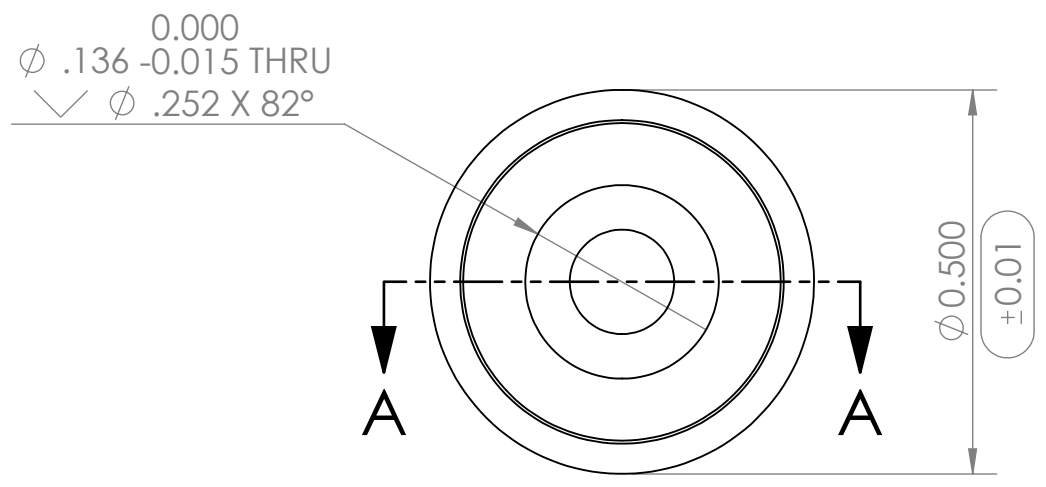
4

3

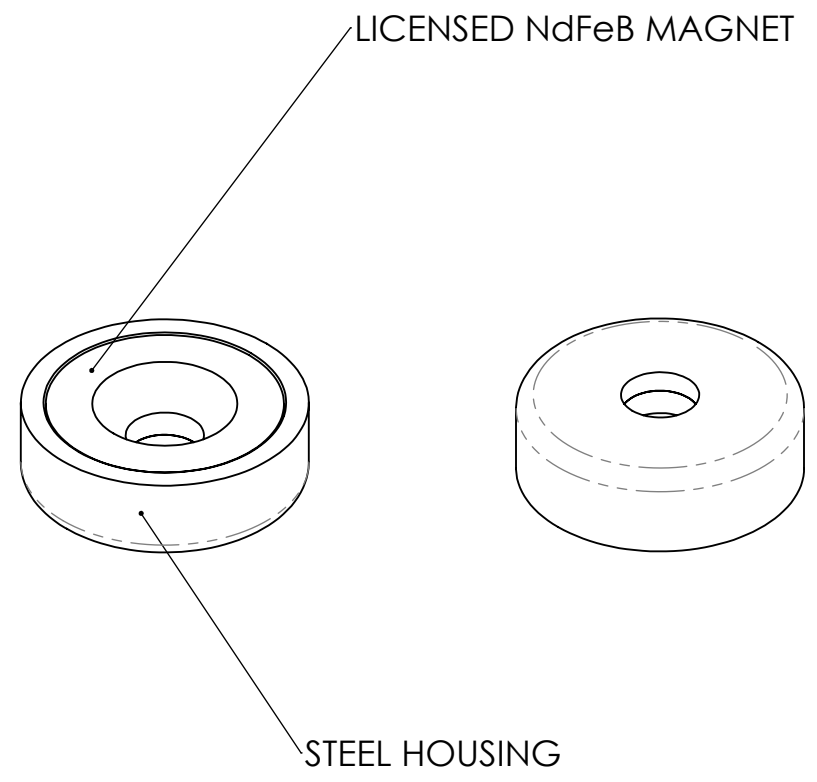
2

1

REVISIONS				
ZONE	REV.	DESCRIPTION	DATE	APPROVED
	A	INITIAL RELEASE	5/14/2020	SW




SECTION A-A



CONDITIONS
1. PART IS TO BE FREE OF SCRATCHES, DENTS, AND DEFECTS CAUSED DURING PRODUCTION.
2. PART IS TO BE FREE OF GREASE, AND DISCOLORATION ON ALL SURFACES.
3. NORTH POLARITY OF MAGNET EXPOSED

MAGNETIC PROPERTIES
MATERIAL: NdFeB
GRADE: 40M
COATING: NICKEL (Ni-Cu-Ni)
MAGNETIZED: YES
RESIDUAL INDUCTION (Br): 12.5-12.8 KG
COERCIVE FORCE (HcB): ≥11.6 KOe
INTRINSIC COERCIVE FORCE (Hci): ≥14.0 KOe
MAXIMUM ENERGY PRODUCT (Bhmax): 38-41 MGOe
MAXIMUM OPERATIONAL TEMPERATURE: 100C / 212F

<b>PROPRIETARY AND CONFIDENTIAL</b>	<b>UNLESS OTHERWISE SPECIFIED</b>	NAME	DATE
THE INFORMATION CONTAINED IN THIS DRAWING IS THE SOLE PROPERTY OF AMAZING MAGNETS LLC. ANY REPRODUCTION IN PART OR AS A WHOLE WITHOUT THE WRITTEN PERMISSION OF AMAZING MAGNETS LLC IS PROHIBITED.	DIMENSIONS ARE IN INCHES TOLERANCES: FRACTIONAL ± 1/64 ANGULAR: MACH ± 1° TWO PLACE DECIMAL ± 0.01 THREE PLACE DECIMAL ± 0.01	DRAWN: CW	5/9/2019
CAGE CODE <b>4R1R7</b>	DO NOT SCALE DRAWING	CHECKED: SW	5/9/2019
		COMMENTS: ALL EDGES BROKEN 0.025" MAX	


**AMAZING MAGNETS®**

TITLE: CUPT500

SIZE <b>B</b>	DWG. NO. CUPT500-SPECS	REV <b>A</b>
------------------	---------------------------	-----------------

4

3

2

1