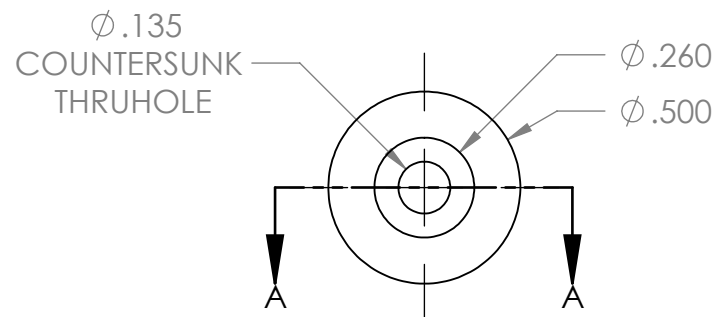
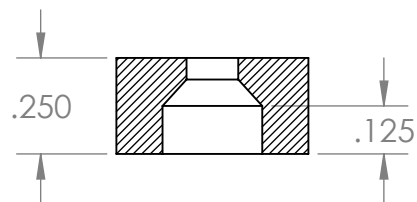



SECTION A-A



GRADE: N45	PROPRIETARY AND CONFIDENTIAL	UNLESS OTHERWISE SPECIFIED:		NAME		DATE
MAGNETIZED: YES		THE INFORMATION CONTAINED IN THIS DRAWING IS THE SOLE PROPERTY OF AMAZING MAGNETS LLC. ANY REPRODUCTION IN PART OR AS A WHOLE WITHOUT THE WRITTEN PERMISSION OF AMAZING MAGNETS LLC IS PROHIBITED.	DIMENSIONS ARE IN INCHES TOLERANCES: FRACTIONAL ± 1/64 ANGULAR: MACH ± 1° TWO PLACE DECIMAL ± 0.01 THREE PLACE DECIMAL ± 0.005	DRAWN	LB	1/27/2012
RESIDUAL INDUCTION (Br): 13.2-13.8 KG	CHECKED			TB	1/27/2012	
COERCIVE FORCE (Hc): ≥ 11.5 KOe	MATERIAL: NdFeB		COMMENTS: ALL EDGES BROKEN 0.025 MAX			
INTRINSIC COERCIVE FORCE (Hci): ≥ 12.0 KOe						
MAX. ENERGY PRODUCT (BHmax): 43-46 MGOe	CAGE CODE 4R1R7	FINISH: Ni-Cu-BLACK EPOXY				
MAX OPERATIONAL TEMP: 80C / 176F		DO NOT SCALE DRAWING				

 AMAZING MAGNETS®		
TITLE: DH250D-CB-FN-N45-BE		
SIZE A	DWG. NO. DH250D-CB-FN-N45-BE-SPECS	REV 0
SCALE 2 : 1		

5

4

3

2

1