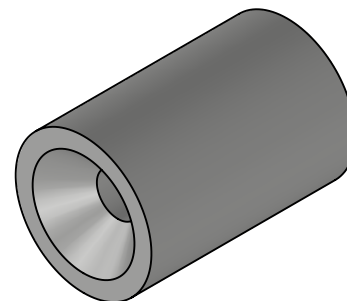
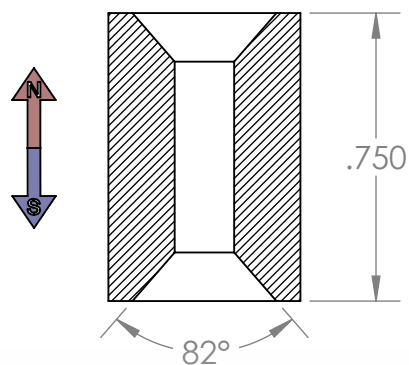
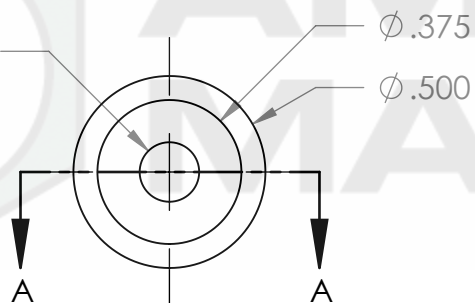


# SECTION A-A



Ø.155  
THRUHOLE  
COUNTERSUNK  
BOTH SIDES



GRADE: <b>N48</b>	<b>PROPRIETARY AND CONFIDENTIAL</b>  THE INFORMATION CONTAINED IN THIS DRAWING IS THE SOLE PROPERTY OF AMAZING MAGNETS LLC. ANY REPRODUCTION IN PART OR AS A WHOLE WITHOUT THE WRITTEN PERMISSION OF AMAZING MAGNETS LLC IS PROHIBITED.  CAGE CODE <b>4R1R7</b>	<b>UNLESS OTHERWISE SPECIFIED:</b>  DIMENSIONS ARE IN INCHES TOLERANCES: FRACTIONAL $\pm 1/64$ ANGULAR: MACH $\pm 1^\circ$ TWO PLACE DECIMAL $\pm 0.01$ THREE PLACE DECIMAL $\pm 0.005$  MATERIAL: <b>NdFeB</b>  FINISH: <b>Ni-Cu-Ni</b> (silver in Color)  DO NOT SCALE DRAWING	NAME		DATE
MAGNETIZED: <b>YES</b>			DRAWN	LB	12/13/2011
RESIDUAL INDUCTION (Br): <b>13.8-14.2 KG</b>			CHECKED	TB	12/13/2011
COERCIVE FORCE (Hc): $\geq 11.6$ KOe			COMMENTS: ALL EDGES BROKEN 0.025 MAX		
INTRINSIC COERCIVE FORCE (Hci): $\geq 12.0$ KOe					
MAX. ENERGY PRODUCT (BHmax): <b>46-49 MGOe</b>					
MAX OPERATIONAL TEMP: <b>80C / 176F</b>					



**AMAZING  
MAGNETS®**

TITLE: **RH750D-F2-N48**

SIZE <b>A</b>	DWG. NO. RH750D-F2-N48-SPECS	REV <b>0</b>
------------------	---------------------------------	-----------------

SCALE 2 : 1