

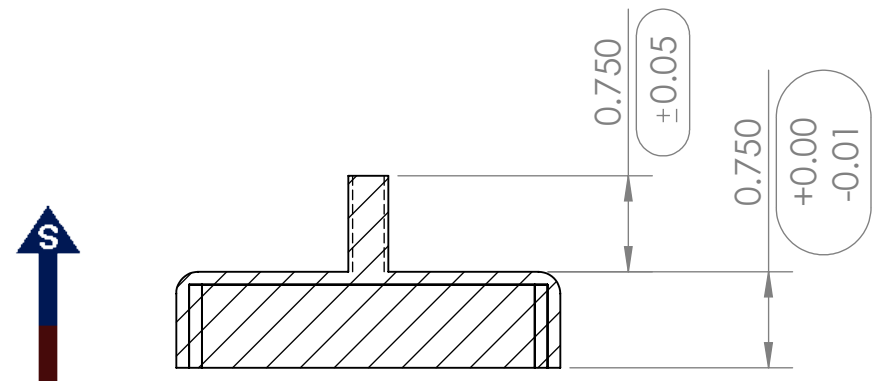
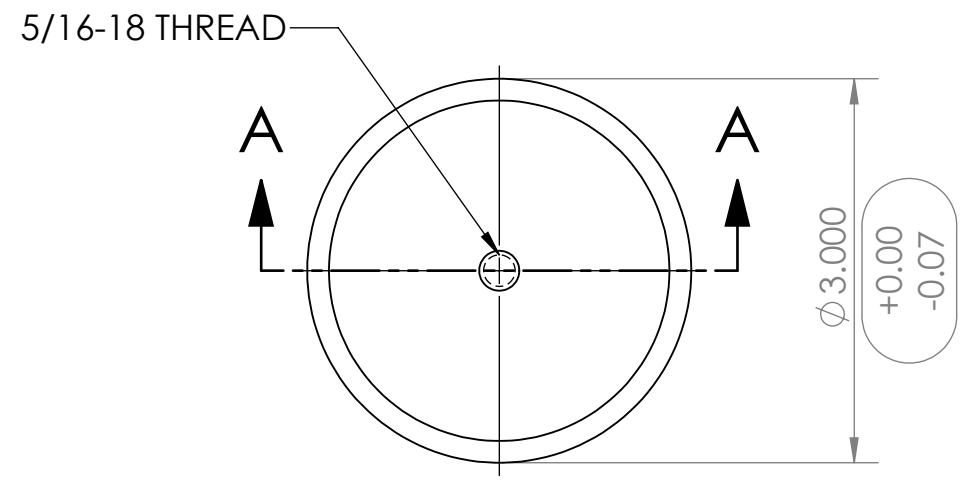
4

3

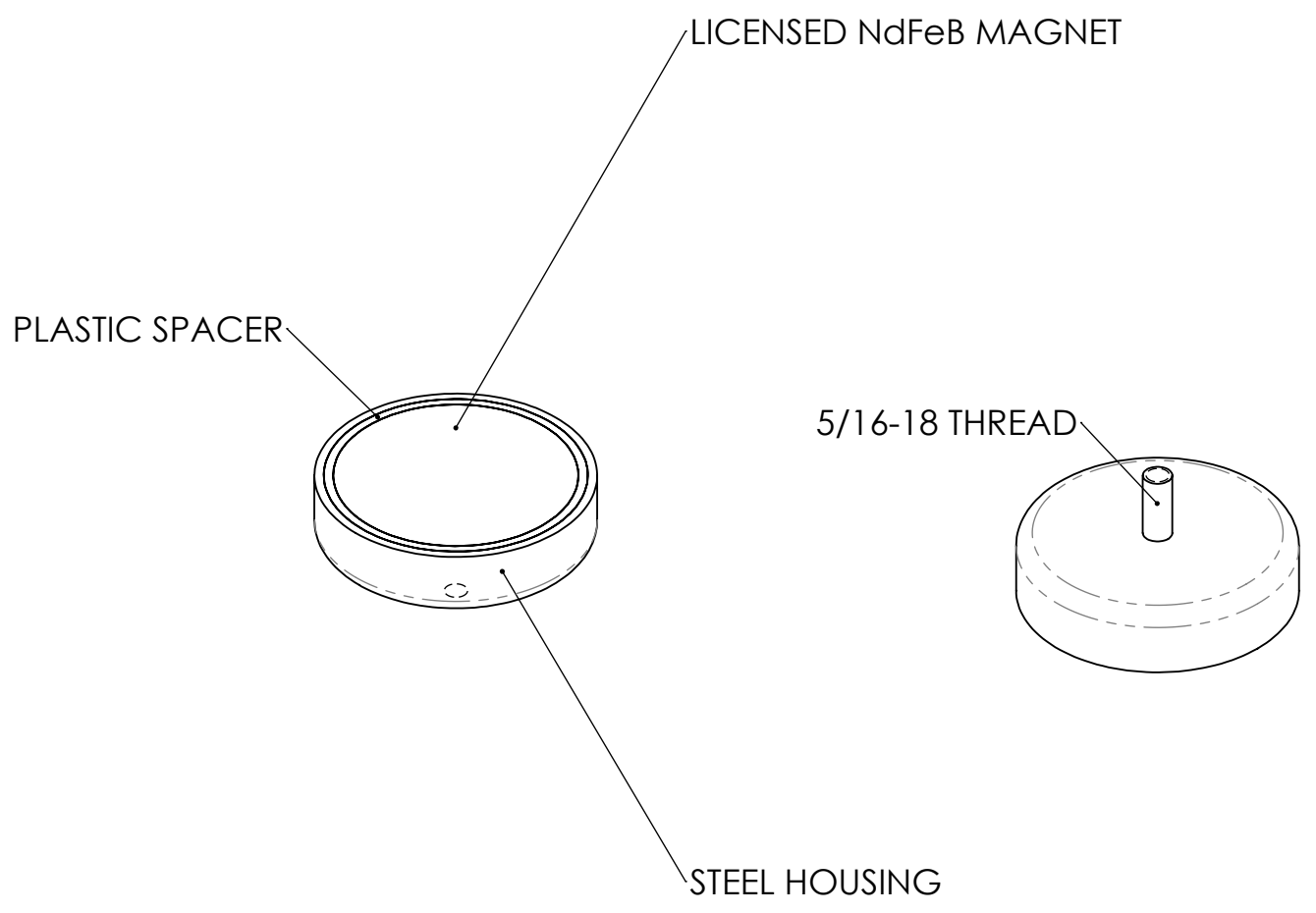
2

1

REVISIONS				
ZONE	REV.	DESCRIPTION	DATE	APPROVED
	A	INITIAL RELEASE	7/24/2020	CW




SECTION A-A



CONDITIONS
1. PART IS TO BE FREE OF SCRATCHES, DENTS, AND DEFECTS CAUSED DURING PRODUCTION.
2. PART IS TO BE FREE OF GREASE, AND DISCOLORATION ON ALL SURFACES.

MAGNETIC PROPERTIES
MATERIAL: NdFeB
GRADE: N40
COATING: NICKEL (Ni-Cu-Ni)
MAGNETIZED: YES
RESIDUAL INDUCTION (Br): 12.5-12.8 KG
COERCIVE FORCE (HcB): ≥11.4 KOe
INTRINSIC COERCIVE FORCE (Hci): ≥12.0 KOe
MAXIMUM ENERGY PRODUCT (Bhmax): 38-41 MGOe
MAXIMUM OPERATIONAL TEMPERATURE: 80C / 176F

PROPRIETARY AND CONFIDENTIAL	UNLESS OTHERWISE SPECIFIED	NAME	DATE
THE INFORMATION CONTAINED IN THIS DRAWING IS THE SOLE PROPERTY OF AMAZING MAGNETS LLC ANY REPRODUCTION IN PART OR AS A WHOLE WITHOUT THE WRITTEN PERMISSION OF AMAZING MAGNETS LLC IS PROHIBITED.	DIMENSIONS ARE IN INCHES TOLERANCES: FRACTIONAL ± 1/64 ANGULAR: MACH ± 1° TWO PLACE DECIMAL ± 0.01 THREE PLACE DECIMAL ± 0.004	DRAWN	SW 7/23/2020
		CHECKED	CW 7/24/2020
CAGE CODE 4R1R7	DO NOT SCALE DRAWING	COMMENTS: ALL EDGES BROKEN 0.025" MAX	



AMAZING MAGNETS®

TITLE: CUPM3000		
SIZE B	DWG. NO. CUPM3000-SPECS	REV A

4

3

2

1