





## **GlasMag: Innovative Magnetic Solutions for the Modern Office**

GlasMag by Amazing Magnets offers innovative magnetic accessories designed for glassboards and whiteboards, helping you stay organized and focused at work, school, or home.

From holding markers, erasers, and important notes to securing project files, our strong, reliable magnets ensure that your essentials stay in place without slipping. Designed with creativity in mind, our collection features stylish colors and functional designs that complement any workspace.

Explore our collection and share your setup by tagging [@AmazingMagnets](#) on social media!

# Contents

---

02

Marker Holders

---

04

Marker Mags

---

05

Paper Clips

---

06

Erasers

---

08

Buttons

---

09

Pawns

---

10

Geoshapes

---

12

Trays

---

14

GlasGrip

---

15

Kits

---

18

Colors & Special Finishes

---

19

Custom Products

---

20

Alternative Usage

---





## Marker Holders

Keep your markers, presentation tools, and other essentials all in one place with these strong and spacious marker holders.





#### Black Aluminum Marker Holder

**Item Code:** PLTNM-MH-NL-BLK **Size:** 3.1" x 3.6" x 1.8"  
Holds 8 standard markers



#### Small Marker Holder

**Item Code:** MH-ABX **Size:** 3" x 3.5" x 1.75"  
Holds 8 standard markers



#### Medium Marker Holder

**Item Code:** SWMH-ABX **Size:** 4.5" x 4" x 2.2"  
Holds 12 standard markers



#### Platinum Marker Holder

**Item Code:** PLTNM-MH-ABX **Size:** 3.1" x 3.6" x 1.8"  
Holds 8 standard markers



#### Large Marker Holder

**Item Code:** DWMH-ABX **Size:** 8.5" x 4" x 2.4"  
Holds 24 standard markers

# Marker Mags

Make any dry-erase marker magnetic! Our Marker Mag Adapters fit any standard dry-erase marker, giving it magnetic powers. **Markers not included.** Pick your color: white, red, blue, green, or black.





**Magnetic Paper Clip**  
Item Code: PC-BLK



**Magnetic Display Clip**  
Item Code: LRPCW-WHITE

## Paper Clips

Magnetic Paper Clips hold up to 50 sheets of paper on magnetic glassboards, whiteboards, and metal surfaces. Choose from the sleek Black Magnetic Paper Clip with GM Logo or the customizable Magnetic Display Clip with Removable Window.



## Erasers

The eraser is the marker board essential, second only to the marker. It is strong and stays in place so it is ready when you need it keeping you focused on your work.

Everclean erasers come with 4 replaceable felt pads. Three of the replaceable pads can be stored inside the eraser body extending the eraser life by 4x making it an amazing value!

### Everclean Eraser

Item Code: EC-ERASER

Everclean-Eraser has a sleek and clean design. Comes with 4 felt pads, and it can store 3 pads inside the eraser body.



# What is the Everclean Eraser?

Our unique Everclean Eraser system features four replaceable felt pads that secretly stores three of the felt pads inside the body of the eraser keeping it in tip-top shape. Buy one eraser that lasts the life of four!

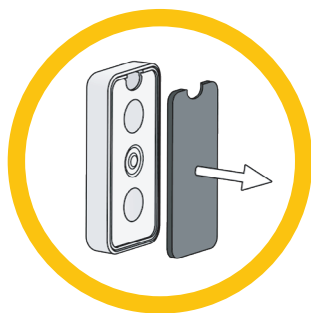
You can purchase a set of three Refill Pads that can be stored inside the Everclean Eraser.

## Everclean Eraser Refill Pads

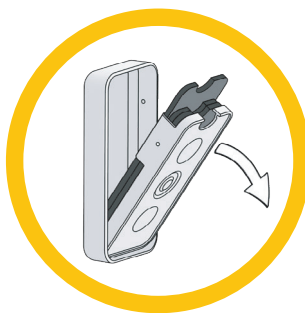
Item Code: EVERCLEAN-REFILL-4PACK



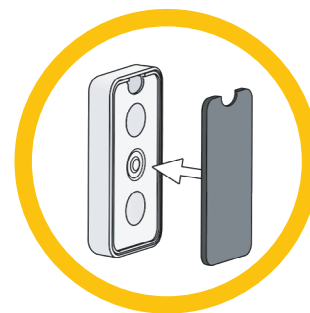
## How to Use Refill Pads



1. Remove the used felt from the eraser.



2. Pinch and pull the felt storage out to reveal replacement felt pads.



3. Close the felt storage and place new felt onto eraser.

# Buttons

The GlasMag Buttons by Amazing Magnets are a classic. They come in a variety of vibrant and creative colors helping you to personalize your board.

Actual  
Sizes

WB250G

WB250H

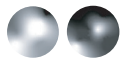
WB470J



## Large Buttons

Item Code: WB470J

Size: 1.2" D x 0.5" H  
Holds 20 sheets of 8.5" x 11" paper on whiteboards, 1/4" glassboards, and other magnetic surfaces.



Note: Special Finishes  
See Page 18

## Medium Buttons

Item Code: WB250H

Size: 1" D x 0.4" H  
Holds 12 sheets of 8.5" x 11" paper on whiteboards, 1/4" glassboards, and other magnetic surfaces.



## Small Buttons

Item Code: WB250G

Size: 0.875" D x 0.375" H  
Holds 5 sheets of 8.5" x 11" paper on whiteboards, 1/4" glassboards, and other magnetic surfaces.

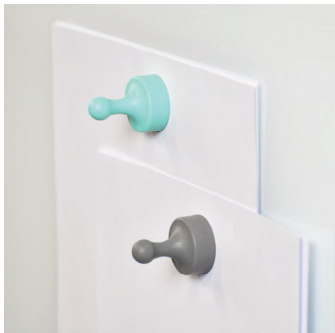




# Pawns

Enhance your workspace collaboration with our Magnetic Glassboard Pawns, designed for businesses that prioritize efficiency and style.

Their chess-inspired design provides a secure grip and strong hold on glassboards, while bold colors add a modern touch to professional spaces.



## Large Pawns

Item Code: WBP250F

Size: 1.25" D x 1.5" H  
Holds 20 sheets of 8.5" x 11" paper on whiteboards, 1/4" glassboards, and other magnetic surfaces.



## Medium Pawns

Item Code: WBP250E

Size: 0.875" D x 1.15" H  
Holds 12 sheets of 8.5" x 11" paper on whiteboards, 1/4" glassboards, and other magnetic surfaces.



Note: Special Finishes  
See Page 18

Actual  
Sizes



# Geoshapes

Geoshape magnets are the fun and easy way to hold up your artwork, charts, photos, and messages. Each magnet holds 20+ sheets of 8.5" x 11" paper on whiteboards and glassboards, and is available in a range of modern colors.

## Jumbo Buttons

Item Code: WB626P

Size: Size: 2" D x 2" W x 0.6" H  
Holds 20+ sheets of 8.5" x 11" paper  
on 1/4" glassboards, whiteboards,  
and other magnetic surfaces

**Fully Enclosed with Sonic Welding**  
**Child Safe Magnet Compliant with CSPIA**



Note:  
Actual  
Sizes



**Note:** Please check that your board is magnetic before purchasing. There must be a steel backing on whiteboards and glassboards for magnetization.





### Triangle

Item Code: WBT250F

Size: 1.62" W x 0.44" H  
Holds 20+ sheets of 8.5" x 11" paper on 1/4" glassboards, whiteboards, and other magnetic surfaces



### Square

Item Code: WBQ250F

Size: 1.29" L x 1.29" W x 0.433" H  
Holds 20+ sheets of 8.5" x 11" paper on 1/4" glassboards, whiteboards, and other magnetic surfaces



### Circle

Item Code: WB440K

Size: 1.375" D x 0.44" H  
Holds 20+ sheets of 8.5" x 11" paper on 1/4" glassboards, whiteboards, and other magnetic surfaces



**Fully Enclosed with Sonic Welding & Child Safe Magnet Compliant with CSPIA**



## Trays

Storage wherever you need it! With our collection of magnetic trays, the possibilities are endless. Display and store large stacks of paper, books, markers, cell phones, and more!



### **Space Tray**

Item Code: GM-TRAY

Ideal for holding dry-erase markers or other presentation tools.

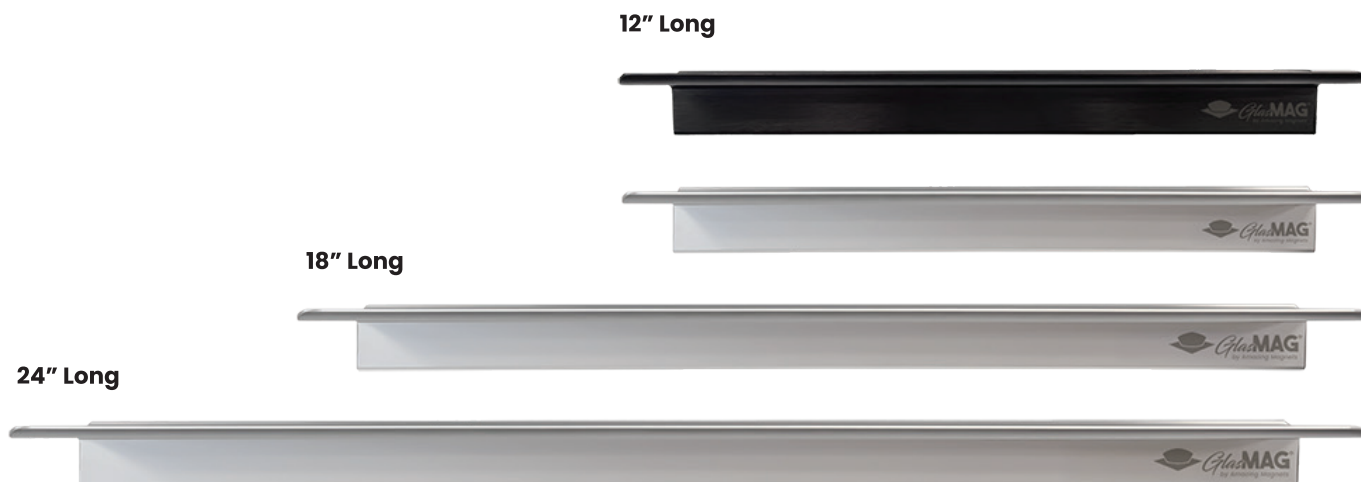


### **Paper Tray**

Item Code: PT-ABX

Large storage fits up to 200 sheets of 8.5" x 11" paper, manila folders, and more!

Combining durability and elegance, the Platinum Marker Trays are available in black or silver and come in three sizes - 12", 18", and 24" to complement any workspace.



**12" Black Aluminum Tray**

Item Code: PLTNM-TRAY-12-BLK-BXD

**12" Platinum Tray**

Item Code: PLTNM-TRAY-12-ABX

**18" Platinum Tray**

Item Code: PLTNM-TRAY-18-ABX

**24" Platinum Tray**

Item Code: PLTNM-TRAY-24-ABX

# GlasGrip

The Magnetic GlasGrip features a clean design and secure hold, attaching to glass, wood, and acrylic with a magnetic marker holder.



## Important:

**GlasGrip** functions as a magnetic backer for marker holder. **Marker holder** sold separately. Use opposite polarities for proper pairing.

*Ex: GG-SWMH-FN-ABX pairs with SWMH-FS-ABX.*



## GlasGrip

Item Code: GG-SWMH-FN-ABX  
GG-SWMH-FS-ABX

# Kits

Start smart with Everclean Starter Pack! This kit includes a magnetic Everclean Eraser and two easy-to-use MarkerMag adaptors, designed for standard dry erase markers. (Markers not included.)

## Everclean Starter Pack



**Everclean Starter Pack**  
Item Code: GM-STARTERKIT-BLK  
Black Everclean Eraser, 2 black MarkerMags





# Kits

Our GlasMag Essential Kits feature carefully selected tools designed to pair perfectly with any glassboard, whiteboard, or magnetic markerboard—making setup fast and easy.

## Everclean Kits



### White Everclean Kit

Item Code: EC-KIT-WHITE-ABX

Marker Holder, 8 white pawns,  
Everclean eraser



### Silver Everclean Kit

Item Code: EC-KIT-SILVER-ABX

Marker Holder, 8 silver pawns,  
Everclean eraser



## Classic Kits

- 1 Magnetic Marker Holder
  - 1 Magnetic Eraser
  - 8 White or Silver Pawns
- SKU: GLASMAG-KIT



### White Kit

Item Code: KIT-WHITE-ABX

Marker Holder, 8 white pawns,  
Classic eraser



### Silver Kit

Item Code: KIT-SILVER-ABX

Marker Holder, 8 silver pawns,  
Classic eraser

## Unique Color Palette

Our products come in a variety of vibrant and creative colors that complement your workplace.



## Special Finishes

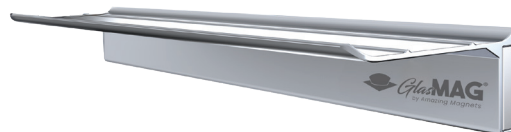
These products also feature special finishes. The Silver and Black Pearl are reflective metallic finishes.



## Specialized Custom Products

We offer custom engraving options to feature your company's logo, name, or message directly on our premium magnetic products.

Our quality products are made with durable ABS, Aluminum, Teflon, PE, PPE & PC plastics that complement our magnets' strength, design and force.



WB470J



WB250H



WB250G

## Alternative Usage





Our premium whiteboard and glassboard accessories are designed for you whether you are in the workplace, school, or home.

GlasMag products work wherever there is a magnetic backing, so you don't have to own a whiteboard or glassboard to enjoy them.

You will enjoy the look, feel, and strength, of our magnetic products.

With GlasMag by Amazing Magnets you have access to the most innovative collection of magnetic products in the marketplace today.

To see our complete online collection or to place an order go to **[amazingmagnets.com/glasmag/](http://amazingmagnets.com/glasmag/)**.

To learn about our private labeling, custom design services, and special pricing contact us at **[customercare@amazingmagnets.com](mailto:customercare@amazingmagnets.com)** or call **1.512.678.2940**





[www.amazingmagnets.com](http://www.amazingmagnets.com)

512.678.2940