

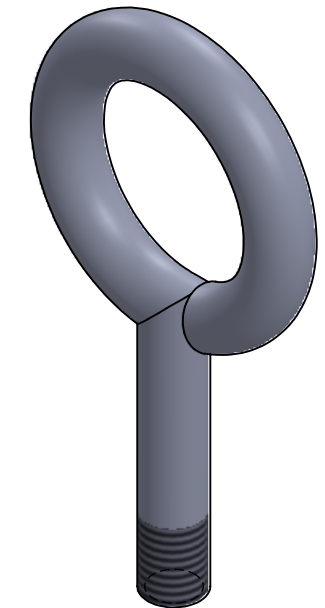
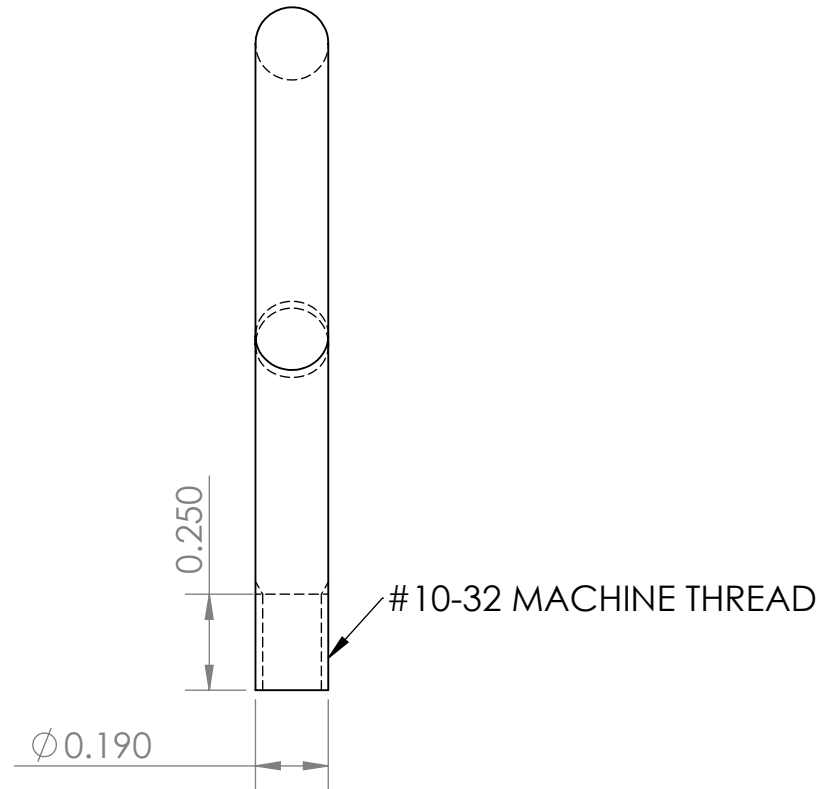
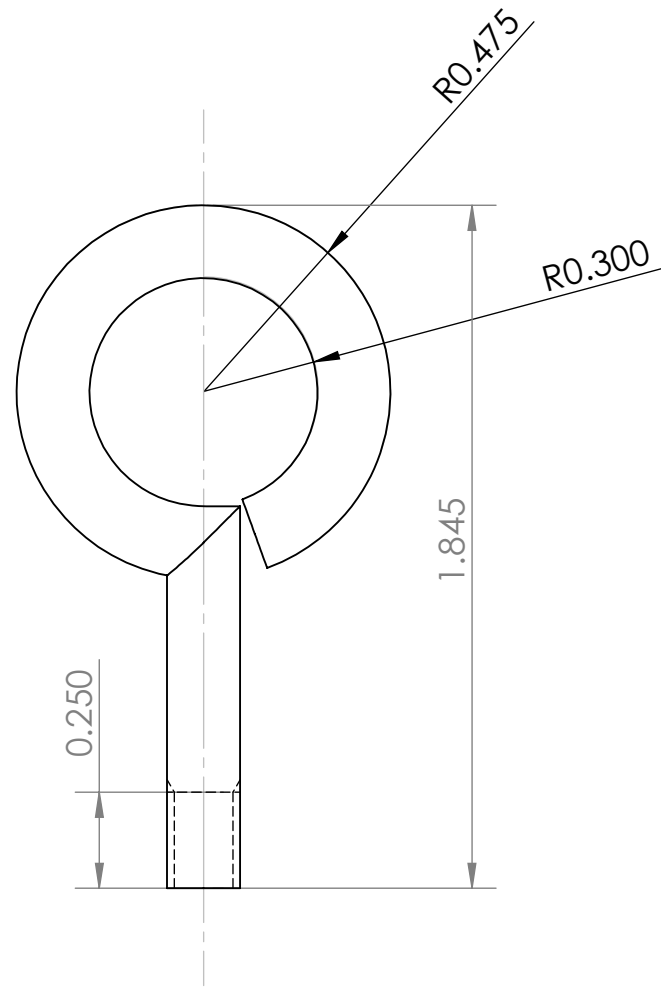
4

3

2

1

REVISIONS				
ZONE	REV.	DESCRIPTION	DATE	APPROVED
	A	INITIAL RELEASE	4/3/2019	SW



CONDITIONS

- PART IS TO BE FREE OF SCRATCHES, DENTS, AND DEFECTS CAUSED DURING PRODUCTION.
- PART IS TO BE FREE OF GREASE, AND DISCOLORATION ON ALL SURFACES.

PROPERTIES

MATERIAL: STEEL
 GRADE: Q235
 COATING: ZINC (Zn)

PROPRIETARY AND CONFIDENTIAL

THE INFORMATION CONTAINED IN THIS DRAWING IS THE SOLE PROPERTY OF AMAZING MAGNETS LLC ANY REPRODUCTION IN PART OR AS A WHOLE WITHOUT THE WRITTEN PERMISSION OF AMAZING MAGNETS LLC IS PROHIBITED.

CAGE CODE
4R1R7

UNLESS OTHERWISE SPECIFIED

DIMENSIONS ARE IN INCHES
 TOLERANCES:
 FRACTIONAL $\pm 1/64$
 ANGULAR: MACH $\pm 1^\circ$
 TWO PLACE DECIMAL ± 0.01
 THREE PLACE DECIMAL ± 0.004

DO NOT SCALE DRAWING

NAME	DATE
DRAWN CW	4/3/2019
CHECKED SW	4/3/2019

COMMENTS:
 ALL EDGES BROKEN 0.025" MAX



TITLE: 10-32-EYEHOOK

SIZE	DWG. NO.	REV
B	10-32-EYEHOOK-SPECS	A

4

3

2

1