

4

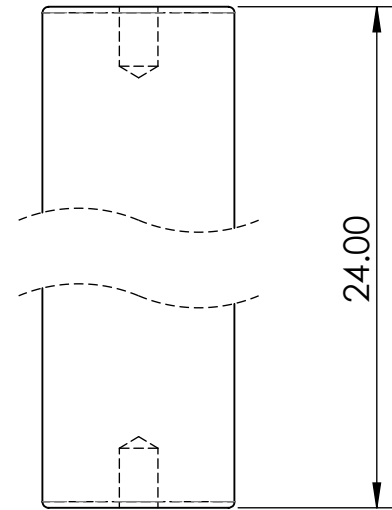
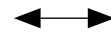
3

2

1

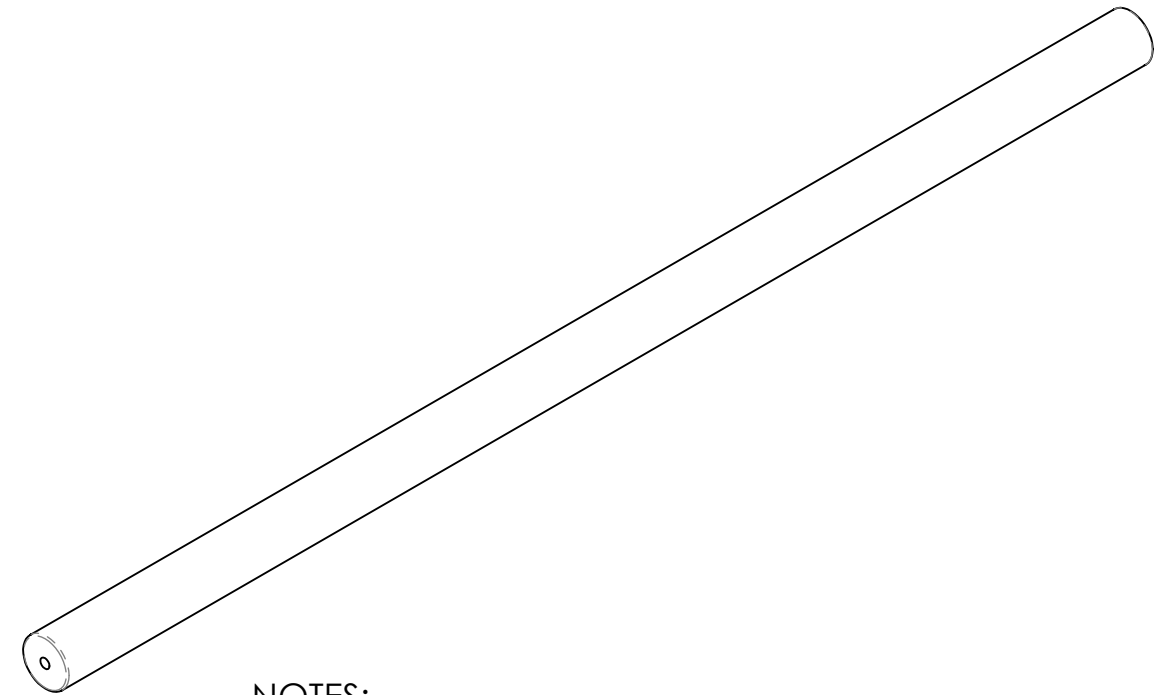
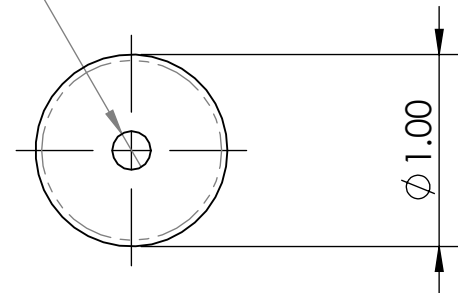
REVISIONS				
ZONE	REV.	DESCRIPTION	DATE	APPROVED
4A	1	CHANGED MAGNET GRADE TO 45M	2/13/2020	S.Witte

OPPOSING AXIAL MAGNETS INSIDE
CREATE RADIAL MAGNETIC FIELD



2X 1/4-20 FEMALE THREADED HOLE

▽ .31



NOTES:
HOUSING MATERIAL: 304 STAINLESS STEEL

CONDITIONS

- PART IS TO BE FREE OF SCRATCHES, DENTS, AND DEFECTS CAUSED DURING PRODUCTION.
- PART IS TO BE FREE OF GREASE, AND DISCOLORATION ON ALL SURFACES.

MAGNETIC PROPERTIES

- MATERIAL: LICENSED NdFeB
- GRADE: 45M
- COATING: Ni-Cu-Ni (NICKEL-COPPER-NICKEL)
- MAGNETIZED: YES
- RESIDUAL INDUCTION (Br): 13.2-13.8 KG
- COERCIVE FORCE (Hcb): ≤12.5 KOe
- INTRINSIC COERCIVE FORCE (Hci): ≤14.0 KOe
- MAXIMUM ENERGY PRODUCT (BHmax): 43-46 MGOe
- MAXIMUM OPERATIONAL TEMPERATURE: 100C / 212F

PROPRIETARY AND CONFIDENTIAL

THE INFORMATION CONTAINED IN THIS DRAWING IS THE SOLE PROPERTY OF AMAZING MAGNETS LLC. ANY REPRODUCTION IN PART OR AS A WHOLE WITHOUT THE WRITTEN PERMISSION OF AMAZING MAGNETS LLC IS PROHIBITED.

CAGE CODE
4R1R7

UNLESS OTHERWISE SPECIFIED

DIMENSIONS ARE IN INCHES
TOLERANCES:
FRACTIONAL ± 1/64
ANGULAR: MACH ± 1°
TWO PLACE DECIMAL ± .005
THREE PLACE DECIMAL ± .004

DO NOT SCALE DRAWING

NAME	DATE
DRAWN L.Bilsoly	2/13/2020
CHECKED S.Witte	2/13/2020

COMMENTS:



TITLE: **BAR24000H**

SIZE	DWG. NO.	REV
B	BAR24000H-SPECS	1

4

3

2

1

B

B

A

A