

4

3

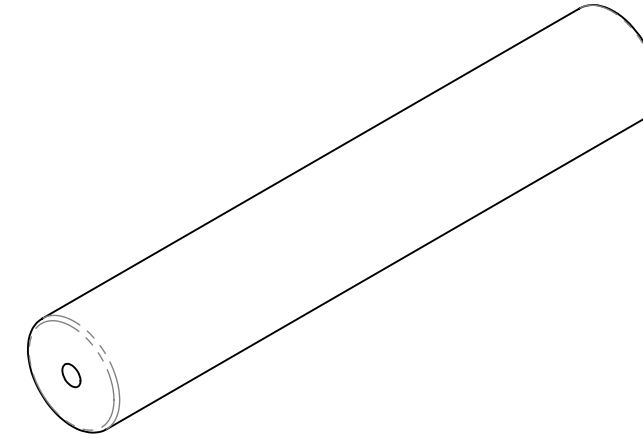
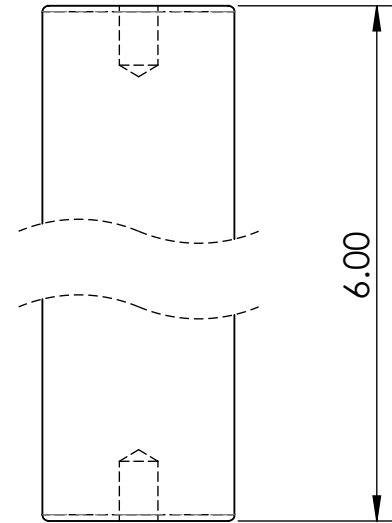
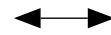
2

1

REVISIONS

ZONE	REV.	DESCRIPTION	DATE	APPROVED
4A	1	CHANGED MAGNET GRADE TO 45M	2/13/2020	S.Witte

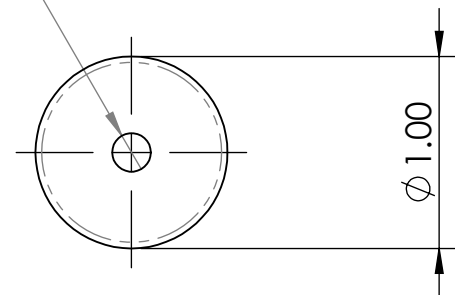
OPPOSING AXIAL MAGNETS INSIDE  
CREATE RADIAL MAGNETIC FIELD



NOTES:  
HOUSING MATERIAL: 304 STAINLESS STEEL

2X 1/4-20 FEMALE THREADED HOLE

∇ .31



CONDITIONS

- PART IS TO BE FREE OF SCRATCHES, DENTS, AND DEFECTS CAUSED DURING PRODUCTION.
- PART IS TO BE FREE OF GREASE, AND DISCOLORATION ON ALL SURFACES.

MAGNETIC PROPERTIES

- MATERIAL: LICENSED NdFeB
- GRADE: 45M
- COATING: Ni-Cu-Ni (NICKEL-COPPER-NICKEL)
- MAGNETIZED: YES
- RESIDUAL INDUCTION (Br): 13.2-13.8 KG
- COERCIVE FORCE (Hcb): ≤12.5 KOe
- INTRINSIC COERCIVE FORCE (Hci): ≤14.0 KOe
- MAXIMUM ENERGY PRODUCT (BHmax): 43-46 MGOe
- MAXIMUM OPERATIONAL TEMPERATURE: 100C / 212F

PROPRIETARY AND CONFIDENTIAL

THE INFORMATION CONTAINED IN THIS DRAWING IS THE SOLE PROPERTY OF AMAZING MAGNETS LLC. ANY REPRODUCTION IN PART OR AS A WHOLE WITHOUT THE WRITTEN PERMISSION OF AMAZING MAGNETS LLC IS PROHIBITED.

CAGE CODE  
**4R1R7**

UNLESS OTHERWISE SPECIFIED

DIMENSIONS ARE IN INCHES  
TOLERANCES:  
FRACTIONAL ± 1/64  
ANGULAR: MACH ± 1°  
TWO PLACE DECIMAL ± .005  
THREE PLACE DECIMAL ± .004

DO NOT SCALE DRAWING

NAME	DATE
DRAWN L.Bilsoly	2/13/2020
CHECKED S.Witte	2/13/2020

COMMENTS:



TITLE: **BAR6000H**

SIZE	DWG. NO.	REV
<b>B</b>	BAR6000H-SPECS	<b>1</b>

4

3

2

1

B

B

A

A