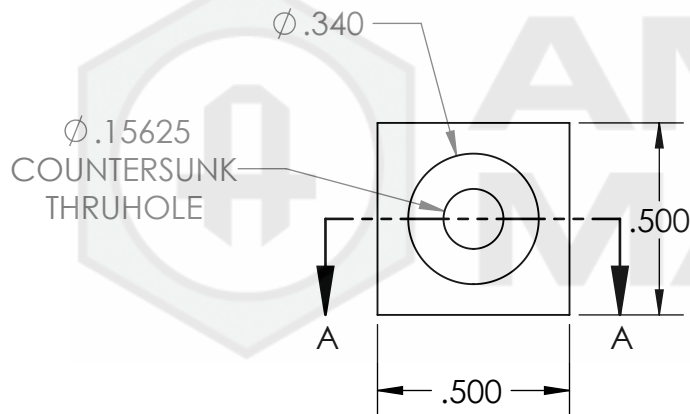
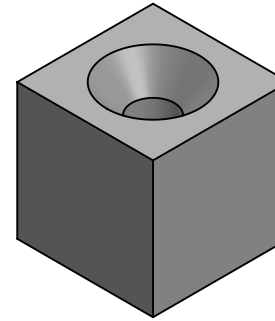
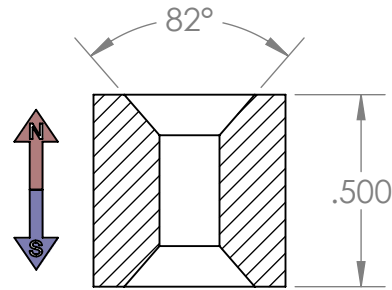


SECTION A-A




GRADE: <b>N40</b>
MAGNETIZED: <b>YES</b>
RESIDUAL INDUCTION (Br): <b>12.5-12.8 KG</b>
COERCIVE FORCE (Hc): <b>≥ 11.4 KOe</b>
INTRINSIC COERCIVE FORCE (Hci): <b>≥ 12.0 KOe</b>
MAX. ENERGY PRODUCT (BHmax): <b>38-41 MGOe</b>
MAX OPERATIONAL TEMP: <b>80C / 176F</b>

<b>PROPRIETARY AND CONFIDENTIAL</b>
THE INFORMATION CONTAINED IN THIS DRAWING IS THE SOLE PROPERTY OF AMAZING MAGNETS LLC. ANY REPRODUCTION IN PART OR AS A WHOLE WITHOUT THE WRITTEN PERMISSION OF AMAZING MAGNETS LLC IS PROHIBITED.
CAGE CODE <b>4R1R7</b>

<b>UNLESS OTHERWISE SPECIFIED:</b>
DIMENSIONS ARE IN INCHES TOLERANCES: FRACTIONAL ± 1/64 ANGULAR: MACH ± 1° TWO PLACE DECIMAL ± 0.01 THREE PLACE DECIMAL ± 0.005
MATERIAL: <b>NdFeB</b>
FINISH: <b>Ni-Cu-Ni</b> (silver in Color)
DO NOT SCALE DRAWING

NAME	DATE
DRAWN LB	1/18/2012
CHECKED TB	1/18/2012
COMMENTS: ALL EDGES BROKEN 0.025 MAX	



**AMAZING  
MAGNETS®**

TITLE: <b>CH500D-F2</b>		
SIZE <b>A</b>	DWG. NO. CH500D-F2-SPECS	REV <b>0</b>
SCALE 2 : 1		

5

4

3

2

1