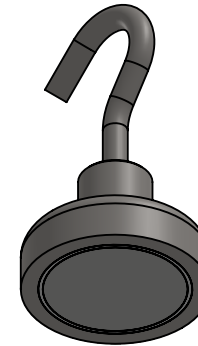
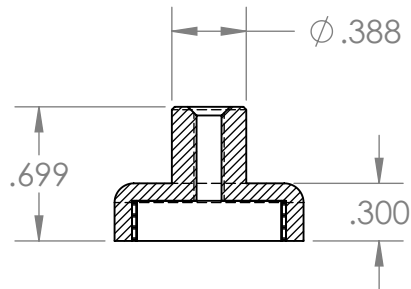


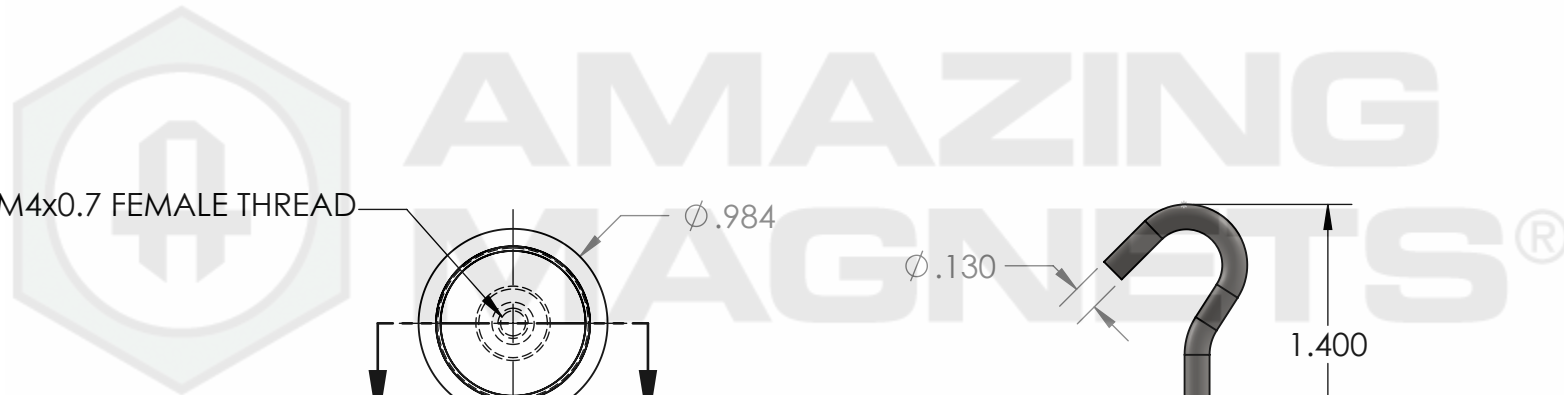
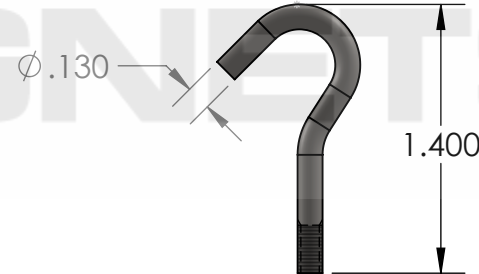
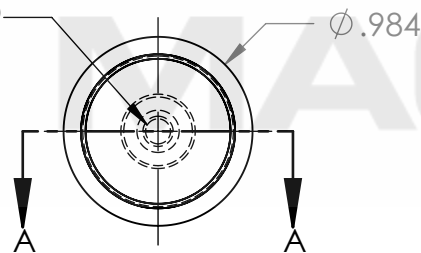
SOUTH POLARITY WARPED  
BY STEEL HOUSING TO  
FACE THE OTHER DIRECTION



SECTION A-A



M4x0.7 FEMALE THREAD




GRADE: <b>N40</b>
MAGNETIZED: <b>YES</b>
RESIDUAL INDUCTION (Br): <b>12.5-12.8 KG</b>
COERCIVE FORCE (Hc): $\geq$ <b>11.4 KOe</b>
INTRINSIC COERCIVE FORCE (Hci): $\geq$ <b>12.0 KOe</b>
MAX. ENERGY PRODUCT (BHmax): <b>38-41 MGOe</b>
MAX OPERATIONAL TEMP: <b>80C / 176F</b>

<b>PROPRIETARY AND CONFIDENTIAL</b>
THE INFORMATION CONTAINED IN THIS DRAWING IS THE SOLE PROPERTY OF AMAZING MAGNETS LLC. ANY REPRODUCTION IN PART OR AS A WHOLE WITHOUT THE WRITTEN PERMISSION OF AMAZING MAGNETS LLC IS PROHIBITED.
CAGE CODE <b>4R1R7</b>

<b>UNLESS OTHERWISE SPECIFIED:</b>
DIMENSIONS ARE IN INCHES TOLERANCES: FRACTIONAL $\pm$ 1/64 ANGULAR: MACH $\pm$ 1° TWO PLACE DECIMAL $\pm$ 0.01 THREE PLACE DECIMAL $\pm$ 0.005
MATERIAL: <b>NdFeB</b>
FINISH: <b>Ni-Cu-Ni</b> (silver in Color)
DO NOT SCALE DRAWING

NAME	DATE
DRAWN LB	1/23/2012
CHECKED TB	1/23/2012
COMMENTS: ALL EDGES BROKEN 0.025 MAX HOOKS INCLUDED	

 <b>AMAZING MAGNETS®</b>	
TITLE: <b>CUPC1000</b>	
SIZE <b>A</b>	DWG. NO. CUPC1000-SPECS
REV <b>0</b>	
SCALE 3 : 2	