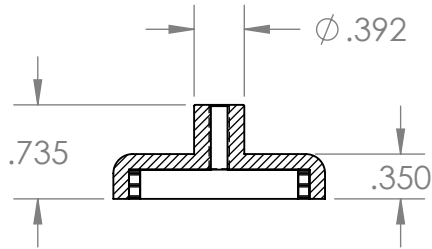


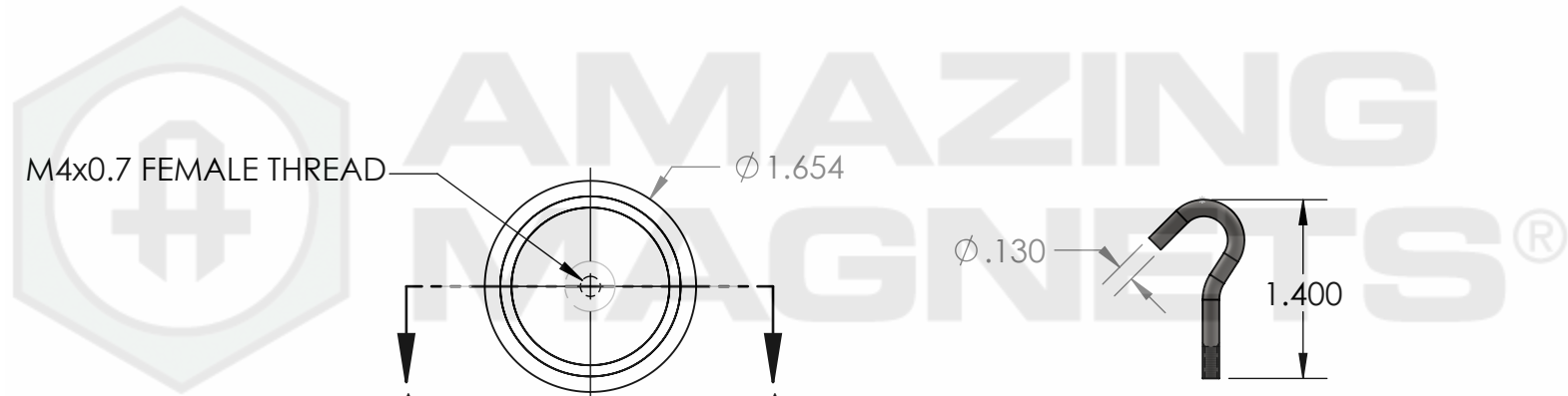
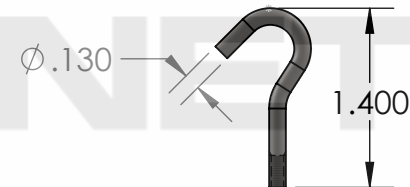
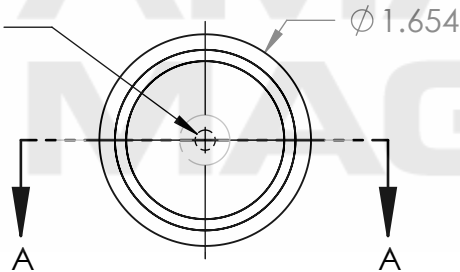
SOUTH POLARITY WARPED
BY STEEL HOUSING TO
FACE THE OTHER DIRECTION



SECTION A-A



M4x0.7 FEMALE THREAD



GRADE: N40	PROPRIETARY AND CONFIDENTIAL	UNLESS OTHERWISE SPECIFIED:	NAME	DATE
MAGNETIZED: YES	THE INFORMATION CONTAINED IN THIS DRAWING IS THE SOLE PROPERTY OF AMAZING MAGNETS LLC. ANY REPRODUCTION IN PART OR AS A WHOLE WITHOUT THE WRITTEN PERMISSION OF AMAZING MAGNETS LLC IS PROHIBITED.	DIMENSIONS ARE IN INCHES	DRAWN	LB
RESIDUAL INDUCTION (Br): 12.5-12.8 KG		TOLERANCES:	CHECKED	TB
COERCIVE FORCE (Hc): ≥ 11.4 KOe		FRACTIONAL $\pm 1/64$	COMMENTS:	
INTRINSIC COERCIVE FORCE (Hci): ≥ 12.0 KOe		ANGULAR: MACH $\pm 1^\circ$	ALL EDGES BROKEN	
MAX. ENERGY PRODUCT (BHmax): 38-41 MGOe		TWO PLACE DECIMAL ± 0.01	0.025 MAX	
MAX OPERATIONAL TEMP: 80C / 176F		THREE PLACE DECIMAL ± 0.005	HOOKS INCLUDED	
	CAGE CODE	MATERIAL:		
	4R1R7	NdFeB		
		FINISH:		
		Ni-Cu-Ni (silver in Color)		
		DO NOT SCALE DRAWING		

AMAZING MAGNETS®

TITLE: **CUPC1500**

SIZE	DWG. NO.	REV
A	CUPC1500-SPECS	0

SCALE 2:3

5

4

3

2

1