

4

3

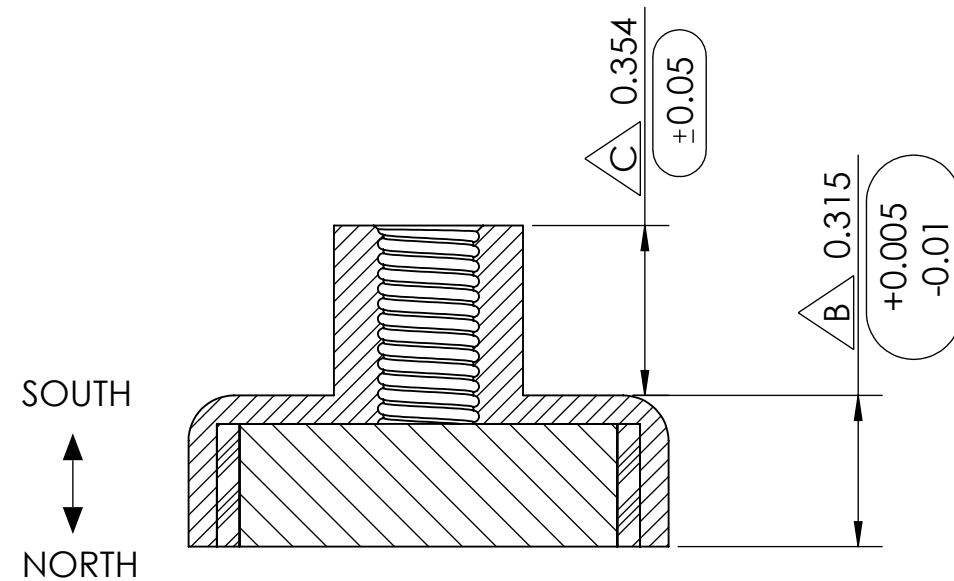
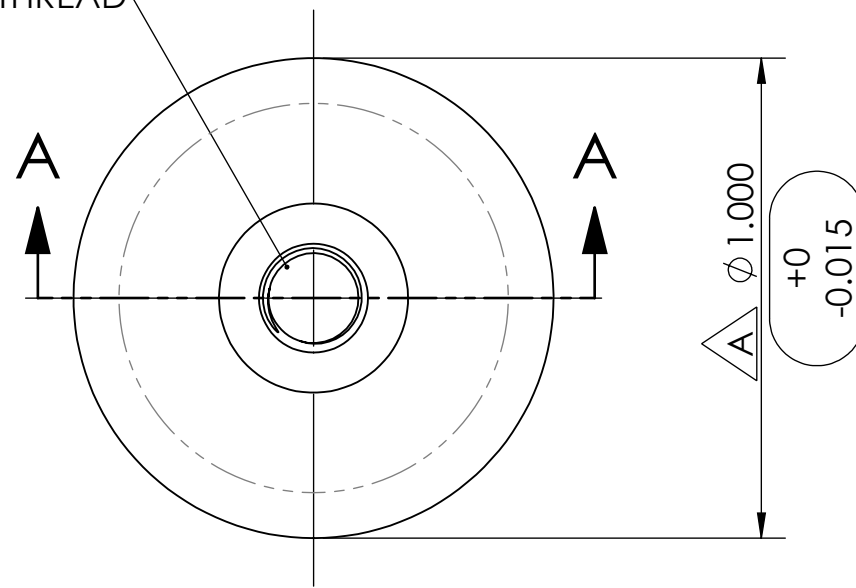
2

1

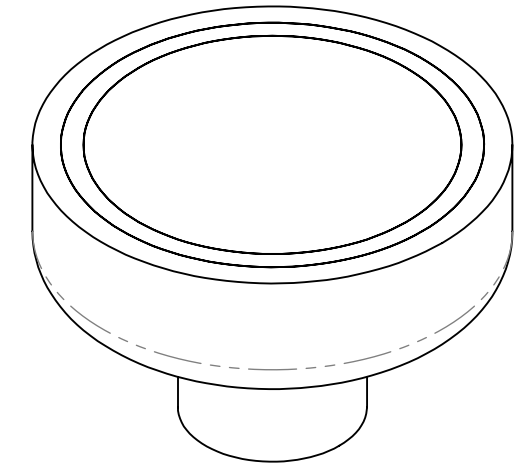
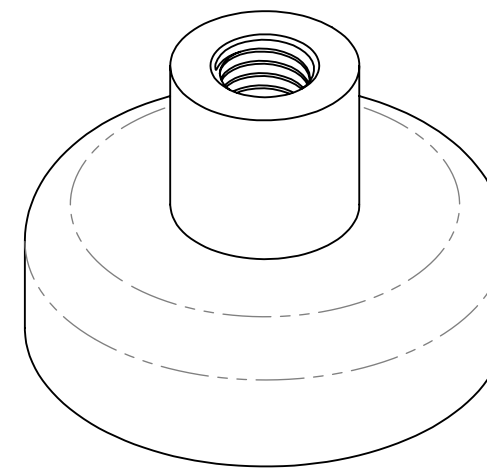
## REVISIONS

ZONE	REV.	DESCRIPTION	DATE	APPROVED
B3	1 $\triangle A$	CHANGED DIAMETER TOLERANCE TO (+0" -0.015")	6/11/2020	C.Pearson
A3	1 $\triangle B$	CHANGED CUP HEIGHT TO (+0.005 - 0.01")	6/11/2020	C.Pearson
A3	1 $\triangle C$	ADDED POST HEIGHT TOLERANCE ( $\pm 0.05$ " )	6/11/2020	C.Pearson

10-32 FEMALE THREAD



SECTION A-A



## CONDITIONS

- PART IS TO BE FREE OF SCRATCHES, DENTS, AND DEFECTS CAUSED DURING PRODUCTION.
- PART IS TO BE FREE OF GREASE, AND DISCOLORATION ON ALL SURFACES.

## MAGNETIC PROPERTIES

- MATERIAL: LICENSED NdFeB
- GRADE: N40
- COATING: Ni-Cu-Ni (NICKEL-COPPER-NICKEL)
- MAGNETIZED: YES
- RESIDUAL INDUCTION (Br): 12.5-12.8 KOe
- COERCIVE FORCE (Hcb):  $\geq 10.9$  KOe
- INTRINSIC COERCIVE FORCE (Hci):  $\geq 12.0$  KOe
- MAXIMUM ENERGY PRODUCT (BHmax): 38-41 MGOe
- MAXIMUM OPERATIONAL TEMPERATURE: 80C / 176F

## PROPRIETARY AND CONFIDENTIAL

THE INFORMATION CONTAINED IN THIS DRAWING IS THE SOLE PROPERTY OF AMAZING MAGNETS LLC. ANY REPRODUCTION IN PART OR AS A WHOLE WITHOUT THE WRITTEN PERMISSION OF AMAZING MAGNETS LLC IS PROHIBITED.

CAGE CODE

4R1R7

## UNLESS OTHERWISE SPECIFIED

DIMENSIONS ARE IN INCHES  
TOLERANCES:  
FRACTIONAL  $\pm 1/64$   
ANGULAR: MACH  $\pm 1^\circ$   
TWO PLACE DECIMAL  $\pm .005$   
THREE PLACE DECIMAL  $\pm .004$

DO NOT SCALE DRAWING

NAME	DATE
DRAWN L.Bilsoly	6/11/2020
CHECKED S.Witte	6/11/2020

COMMENTS:



TITLE: CUPF1000

SIZE	DWG. NO.	REV
<b>B</b>	CUPF1000-SPECS	<b>1</b>

4

3

2

1