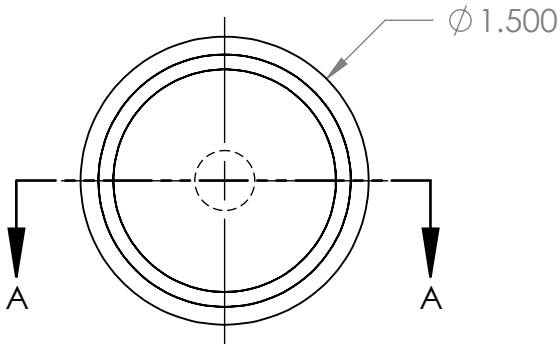
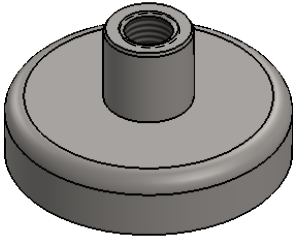
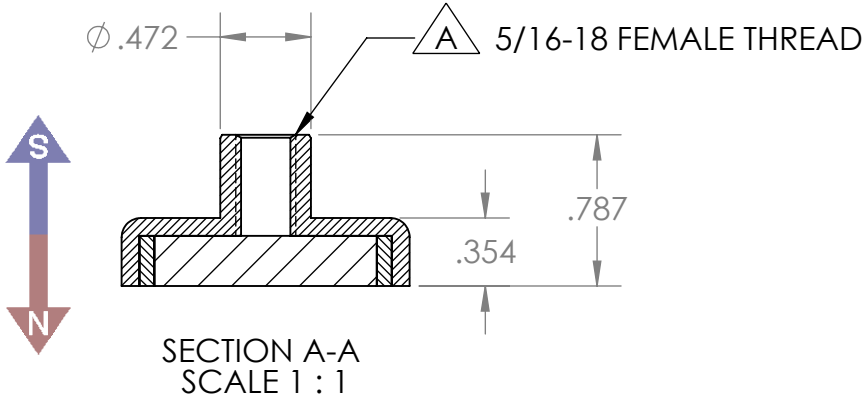


REVISION NO.	REV 0	REV 1
A	5/16-24 FEMALE THREAD	5/16-18 FEMALE THREAD




GRADE: <b>N40</b>
MAGNETIZED: <b>YES</b>
RESIDUAL INDUCTION (Br): <b>12.5-12.8 KG</b>
COERCIVE FORCE (Hc): <b>≥ 11.4 KOe</b>
INTRINSIC COERCIVE FORCE (Hci): <b>≥ 12.0 KOe</b>
MAX. ENERGY PRODUCT (BHmax): <b>38-41 MGOe</b>
MAX OPERATIONAL TEMP: <b>80C / 176F</b>

<b>PROPRIETARY AND CONFIDENTIAL</b>
THE INFORMATION CONTAINED IN THIS DRAWING IS THE SOLE PROPERTY OF AMAZING MAGNETS LLC. ANY REPRODUCTION IN PART OR AS A WHOLE WITHOUT THE WRITTEN PERMISSION OF AMAZING MAGNETS LLC IS PROHIBITED.
CAGE CODE <b>4R1R7</b>

<b>UNLESS OTHERWISE SPECIFIED:</b>
DIMENSIONS ARE IN INCHES TOLERANCES: FRACTIONAL ± 1/64 ANGULAR: MACH ± 1° TWO PLACE DECIMAL ± 0.01 THREE PLACE DECIMAL ± 0.005
MATERIAL: <b>NdFeB</b>
FINISH: <b>Ni-Cu-Ni</b> (silver in Color)
DO NOT SCALE DRAWING

NAME	DATE
DRAWN L.Bilisoly	10/3/2016
CHECKED C.Wyckhouse	10/3/2016
COMMENTS: ALL EDGES BROKEN 0.025 MAX	



**AMAZING MAGNETS®**

TITLE: **CUPF1500**

SIZE <b>A</b>	DWG. NO. CUPF1500-SPECS	REV <b>1</b>
------------------	----------------------------	-----------------

SCALE 1 : 1