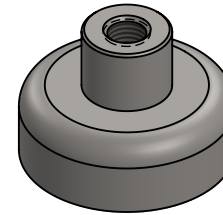
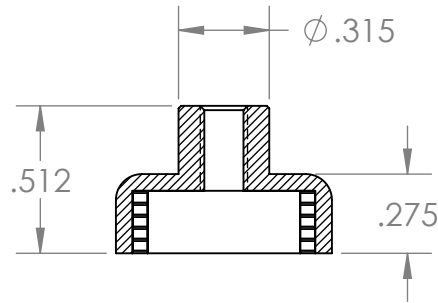


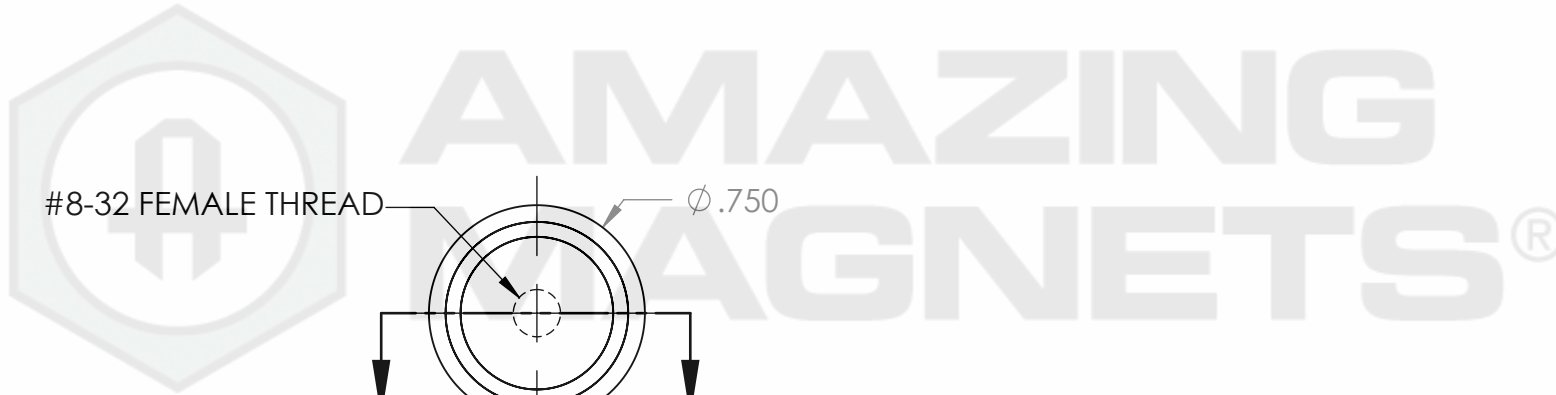
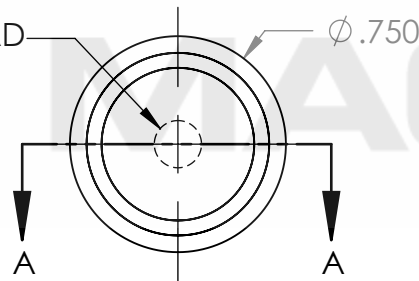
SOUTH POLARITY WARPED
BY STEEL HOUSING TO
FACE THE OTHER DIRECTION




SECTION A-A



#8-32 FEMALE THREAD



GRADE: N40	PROPRIETARY AND CONFIDENTIAL THE INFORMATION CONTAINED IN THIS DRAWING IS THE SOLE PROPERTY OF AMAZING MAGNETS LLC. ANY REPRODUCTION IN PART OR AS A WHOLE WITHOUT THE WRITTEN PERMISSION OF AMAZING MAGNETS LLC IS PROHIBITED. CAGE CODE 4R1R7	UNLESS OTHERWISE SPECIFIED: DIMENSIONS ARE IN INCHES TOLERANCES: FRACTIONAL $\pm 1/64$ ANGULAR: MACH $\pm 1^\circ$ TWO PLACE DECIMAL ± 0.01 THREE PLACE DECIMAL ± 0.005 MATERIAL: NdFeB FINISH: Ni-Cu-Ni (silver in Color) DO NOT SCALE DRAWING	NAME		DATE
MAGNETIZED: YES			DRAWN	LB	1/25/2012
RESIDUAL INDUCTION (Br): 12.5-12.8 KG			CHECKED	TB	1/25/2012
COERCIVE FORCE (Hc): ≥ 11.4 KOe			COMMENTS: ALL EDGES BROKEN 0.025 MAX		
INTRINSIC COERCIVE FORCE (Hci): ≥ 12.0 KOe					
MAX. ENERGY PRODUCT (BHmax): 38-41 MGOe					
MAX OPERATIONAL TEMP: 80C / 176F					

 AMAZING MAGNETS®	
TITLE: CUPF750	
SIZE A	DWG. NO. CUPF750-SPECS
REV 0	
SCALE 3 : 2	

5

4

3

2

1