

4

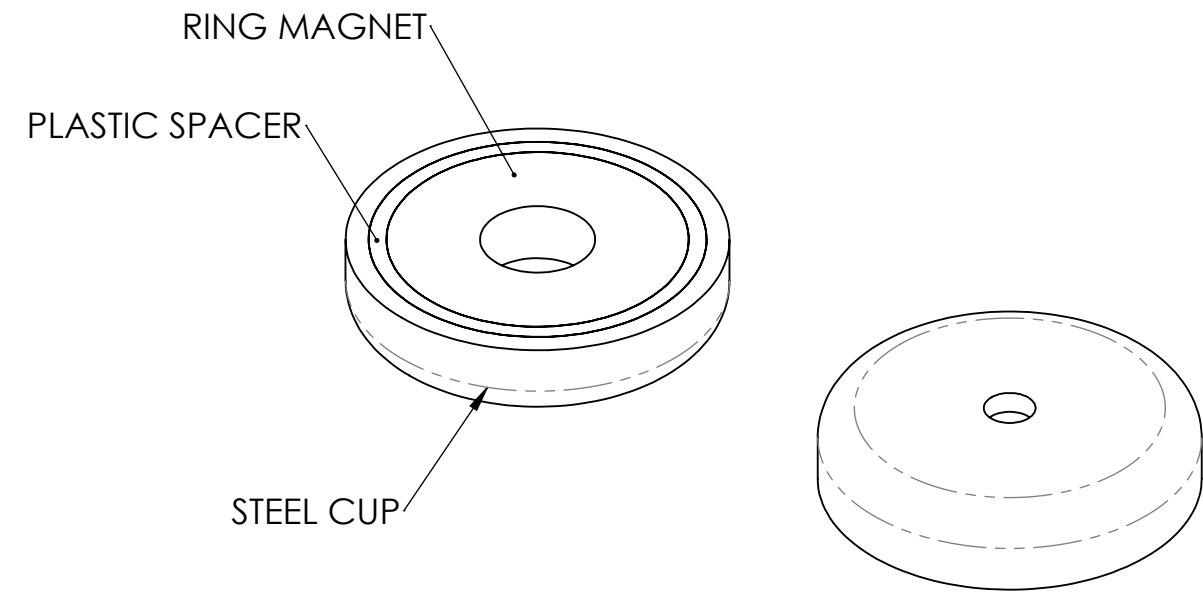
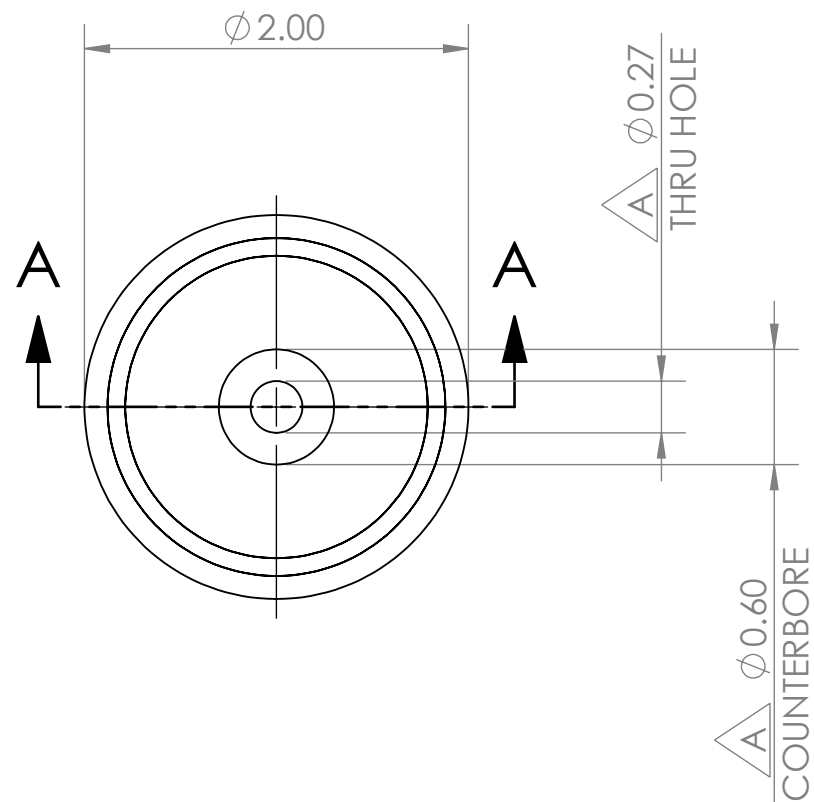
3

2

1

## REVISIONS

ZONE	REV.	DESCRIPTION	DATE	APPROVED
B3	A	THRU HOLE CHANGE FROM 0.38" TO 0.27"	9/13/2018	S.Witte
B3	A	COUNTERBORE CHANGED FROM 0.88" TO 0.6"	9/19/2018	S.Witte



NORTH  
  
 SOUTH

SECTION A-A

## CONDITIONS

- PART IS TO BE FREE OF SCRATCHES, DENTS, AND DEFECTS CAUSED DURING PRODUCTION.
- PART IS TO BE FREE OF GREASE, AND DISCOLORATION ON ALL SURFACES.

## MAGNETIC PROPERTIES

- MATERIAL: LICENSED NdFeB
- GRADE: N40
- COATING: Ni-Cu-Ni (NICKEL-COPPER-NICKEL)
- MAGNETIZED: YES
- RESIDUAL INDUCTION (Br): 12.5-12.8 KG
- COERCIVE FORCE (Hcb):  $\leq 10.9$  KOe
- INTRINSIC COERCIVE FORCE (Hci):  $\leq 12.0$  KOe
- MAXIMUM ENERGY PRODUCT (BHmax): 38-41 MGOe
- MAXIMUM OPERATIONAL TEMPERATURE: 80C / 176F

## PROPRIETARY AND CONFIDENTIAL

THE INFORMATION CONTAINED IN THIS DRAWING IS THE SOLE PROPERTY OF AMAZING MAGNETS LLC. ANY REPRODUCTION IN PART OR AS A WHOLE WITHOUT THE WRITTEN PERMISSION OF AMAZING MAGNETS LLC IS PROHIBITED.

CAGE CODE

4R1R7

## UNLESS OTHERWISE SPECIFIED

DIMENSIONS ARE IN INCHES  
 TOLERANCES:  
 FRACTIONAL  $\pm 1/64$   
 ANGULAR: MACH  $\pm 1^\circ$   
 TWO PLACE DECIMAL  $\pm .005$   
 THREE PLACE DECIMAL  $\pm .004$

DO NOT SCALE DRAWING

NAME	DATE
DRAWN L.Bilsoly	9/13/2018
CHECKED S.Witte	9/13/2018

COMMENTS:



TITLE: CUPH2000

SIZE	DWG. NO.	REV
<b>B</b>	CUPH2000-REVA	<b>A</b>

4

3

2

1