

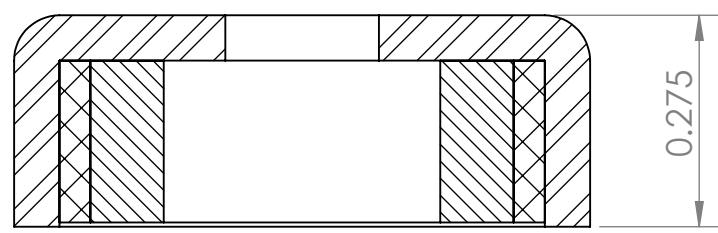
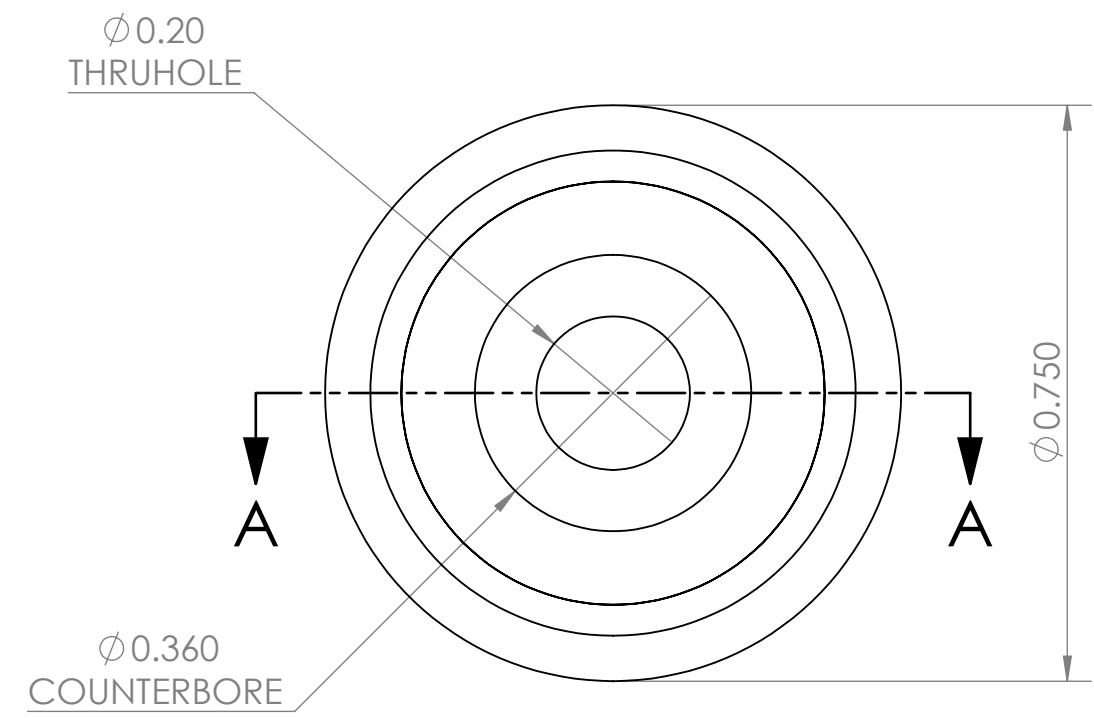
4

3

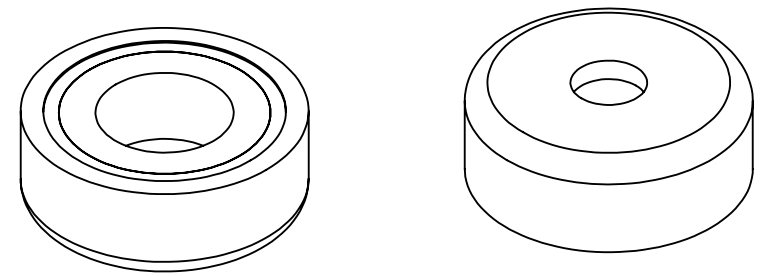
2

1

REVISIONS				
ZONE	REV.	DESCRIPTION	DATE	APPROVED
	A	INITIAL RELEASE	6/26/2020	SW



SECTION A-A



B

B

A

A

CONDITIONS

- PART IS TO BE FREE OF SCRATCHES, DENTS, AND DEFECTS CAUSED DURING PRODUCTION.
- PART IS TO BE FREE OF GREASE, AND DISCOLORATION ON ALL SURFACES.
- NORTH POLARITY OF MAGNET EXPOSED

MAGNETIC PROPERTIES

MATERIAL: NdFeB  
 GRADE: N40  
 COATING: NICKEL (Ni-Cu-Ni)  
 MAGNETIZED: YES, AXIAL  
 RESIDUAL INDUCTION (Br): 12.5-12.8 KG  
 COERCIVE FORCE (HcB): ≥11.4 KOe  
 INTRINSIC COERCIVE FORCE (Hci): ≥12.0 KOe  
 MAXIMUM ENERGY PRODUCT (Bhmax): 38-41 MGOe  
 MAXIMUM OPERATIONAL TEMPERATURE: 80C / 176F

PROPRIETARY AND CONFIDENTIAL

THE INFORMATION CONTAINED IN THIS DRAWING IS THE SOLE PROPERTY OF AMAZING MAGNETS LLC ANY REPRODUCTION IN PART OR AS A WHOLE WITHOUT THE WRITTEN PERMISSION OF AMAZING MAGNETS LLC IS PROHIBITED.

CAGE CODE  
**4R1R7**

UNLESS OTHERWISE SPECIFIED

DIMENSIONS ARE IN INCHES  
 TOLERANCES:  
 FRACTIONAL ± 1/64  
 ANGULAR: MACH ± 1°  
 TWO PLACE DECIMAL ± 0.01  
 THREE PLACE DECIMAL ± 0.010

DO NOT SCALE DRAWING

NAME	DATE
DRAWN CW	6/11/2020
CHECKED SW	6/26/2020

COMMENTS:  
 ALL EDGES BROKEN 0.025" MAX



TITLE: CUPH750

SIZE <b>B</b>	DWG. NO. CUPH750-SPECS	REV <b>A</b>
------------------	---------------------------	-----------------

4

3

2

1