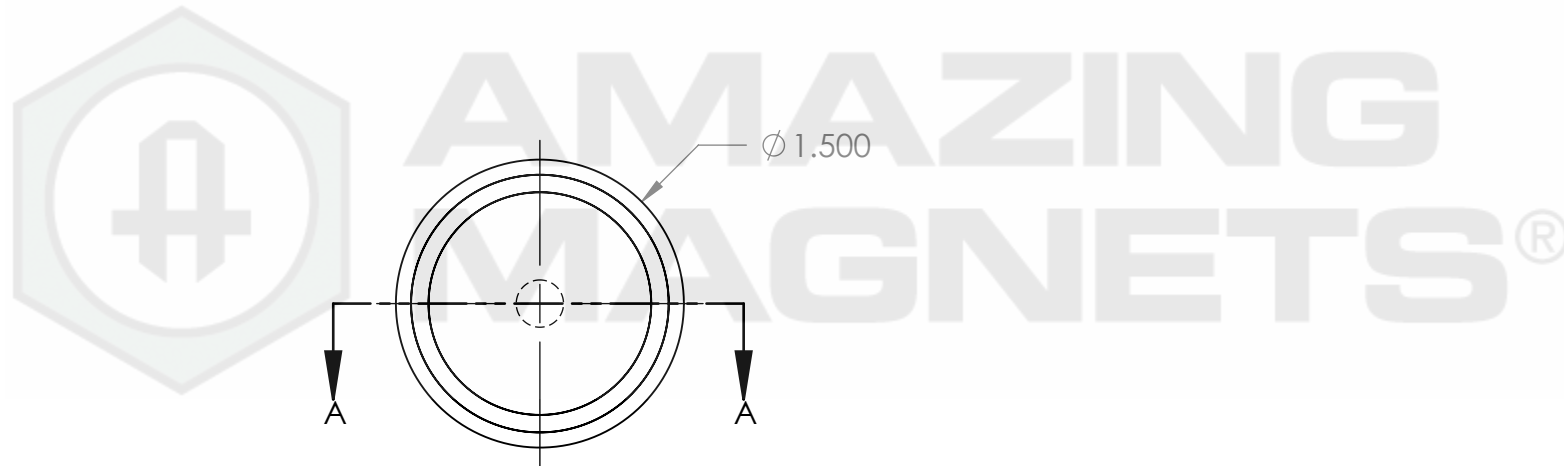
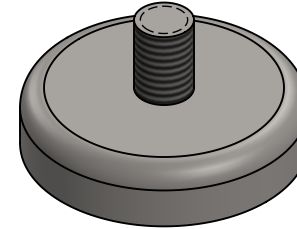
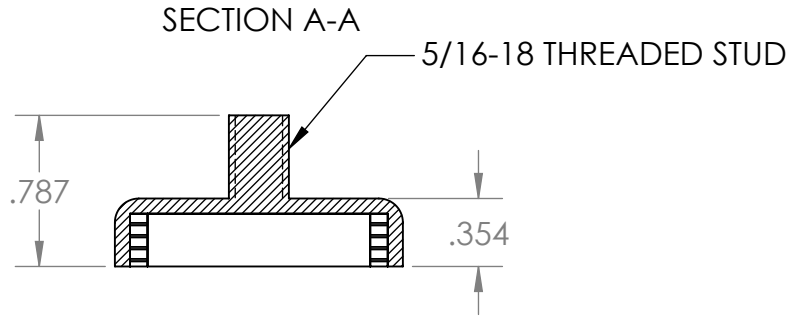
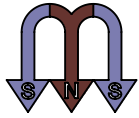



SOUTH POLARITY WARPED
BY STEEL HOUSING TO
FACE THE OTHER DIRECTION



GRADE: N40	PROPRIETARY AND CONFIDENTIAL	UNLESS OTHERWISE SPECIFIED:	NAME	DATE	
MAGNETIZED: YES	THE INFORMATION CONTAINED IN THIS DRAWING IS THE SOLE PROPERTY OF AMAZING MAGNETS LLC. ANY REPRODUCTION IN PART OR AS A WHOLE WITHOUT THE WRITTEN PERMISSION OF AMAZING MAGNETS LLC IS PROHIBITED.	DIMENSIONS ARE IN INCHES TOLERANCES: FRACTIONAL $\pm 1/64$ ANGULAR: MACH $\pm 1^\circ$ TWO PLACE DECIMAL ± 0.01 THREE PLACE DECIMAL ± 0.005	DRAWN	LB	1/24/2012
RESIDUAL INDUCTION (Br): 12.5-12.8 KG		MATERIAL:	CHECKED	TB	1/24/2012
COERCIVE FORCE (Hc): ≥ 11.4 KOe		NdFeB	COMMENTS: ALL EDGES BROKEN 0.025 MAX		
INTRINSIC COERCIVE FORCE (Hci): ≥ 12.0 KOe		FINISH:			
MAX. ENERGY PRODUCT (BHmax): 38-41 MGOe		Ni-Cu-Ni (silver in Color)			
MAX OPERATIONAL TEMP: 80C / 176F	CAGE CODE 4R1R7	DO NOT SCALE DRAWING			



**AMAZING
MAGNETS®**

TITLE: **CUPM1500**

SIZE A	DWG. NO. CUPM1500-SPECS	REV 0
------------------	----------------------------	-----------------

SCALE 1 : 1

5

4

3

2

1