

4

3

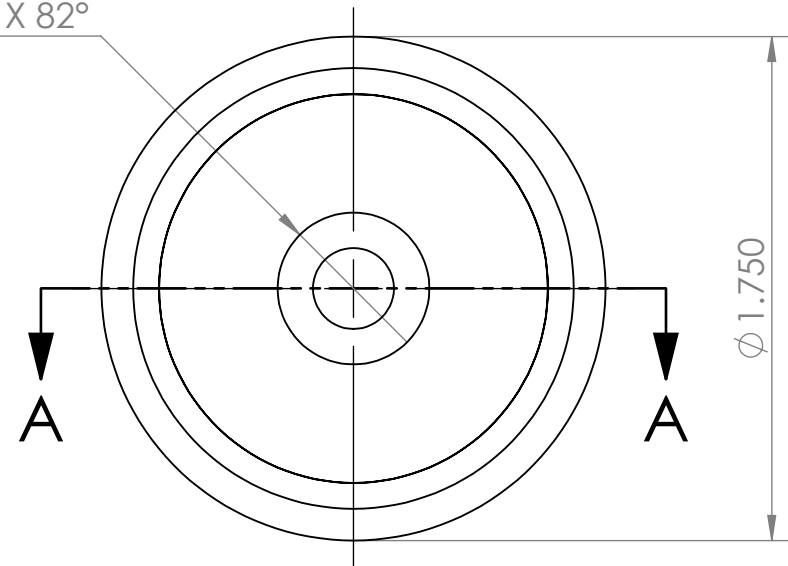
2

1

## REVISIONS

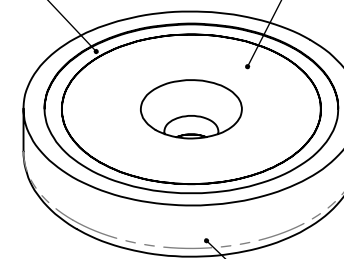
ZONE	REV.	DESCRIPTION	DATE	APPROVED
	A	INITIAL RELEASE	10/14/2020	CW

$\phi$  .281 THRU ALL  
 $\surd$   $\phi$  .527 X 82°

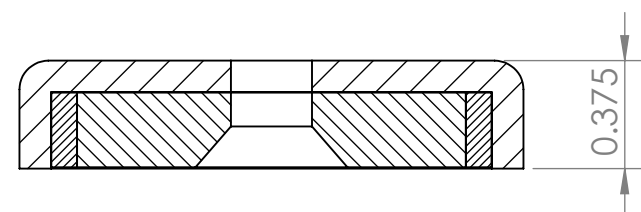
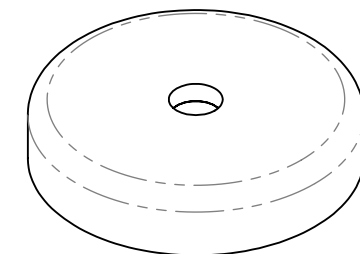


PLASTIC SPACER

LICENSED NdFeB MAGNET



STEEL HOUSING



SECTION A-A

## CONDITIONS

- PART IS TO BE FREE OF SCRATCHES, DENTS, AND DEFECTS CAUSED DURING PRODUCTION.
- PART IS TO BE FREE OF GREASE, AND DISCOLORATION ON ALL SURFACES.

## MAGNETIC PROPERTIES

MATERIAL: Licensed NdFeB  
 GRADE: N42  
 COATING: NICKEL (Ni-Cu-Ni)  
 MAGNETIZED: YES  
 RESIDUAL INDUCTION (Br): 12.8-13.2 KG  
 COERCIVE FORCE (HcB):  $\geq 11.5$  KOe  
 INTRINSIC COERCIVE FORCE (Hci):  $\geq 12.0$  KOe  
 MAXIMUM ENERGY PRODUCT (Bhmax): 40-43 MGOe  
 MAXIMUM OPERATIONAL TEMPERATURE: 80C / 176F

## PROPRIETARY AND CONFIDENTIAL

THE INFORMATION CONTAINED IN THIS DRAWING IS THE SOLE PROPERTY OF AMAZING MAGNETS LLC ANY REPRODUCTION IN PART OR AS A WHOLE WITHOUT THE WRITTEN PERMISSION OF AMAZING MAGNETS LLC IS PROHIBITED.

CAGE CODE  
**4R1R7**

## UNLESS OTHERWISE SPECIFIED

DIMENSIONS ARE IN INCHES  
 TOLERANCES:  
 FRACTIONAL  $\pm 1/64$   
 ANGULAR: MACH  $\pm 1^\circ$   
 TWO PLACE DECIMAL  $\pm 0.01$   
 THREE PLACE DECIMAL  $\pm 0.004$

DO NOT SCALE DRAWING

NAME	DATE
DRAWN SW	10/14/2020
CHECKED CW	10/14/2020

COMMENTS:  
 ALL EDGES BROKEN 0.025" MAX



TITLE: CUPT375N-281-82-N42

SIZE	DWG. NO.	REV
<b>B</b>	CUPT375N-281-82-N42-SPECS	<b>A</b>

4

3

2

1