

4

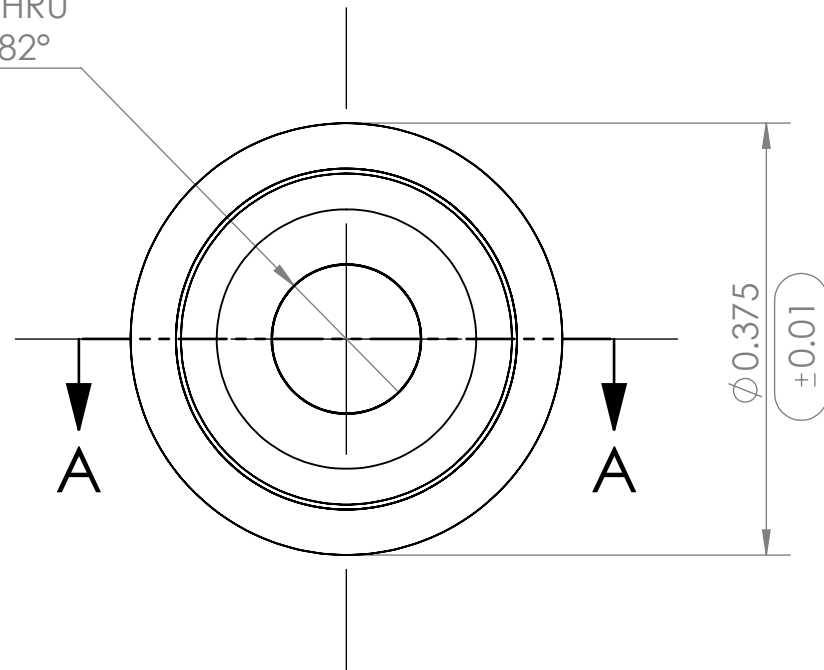
3

2

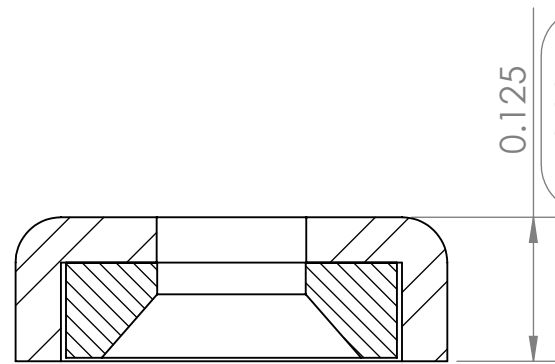
1

REVISIONS				
ZONE	REV.	DESCRIPTION	DATE	APPROVED
	A	INITIAL RELEASE	6/22/2020	SW

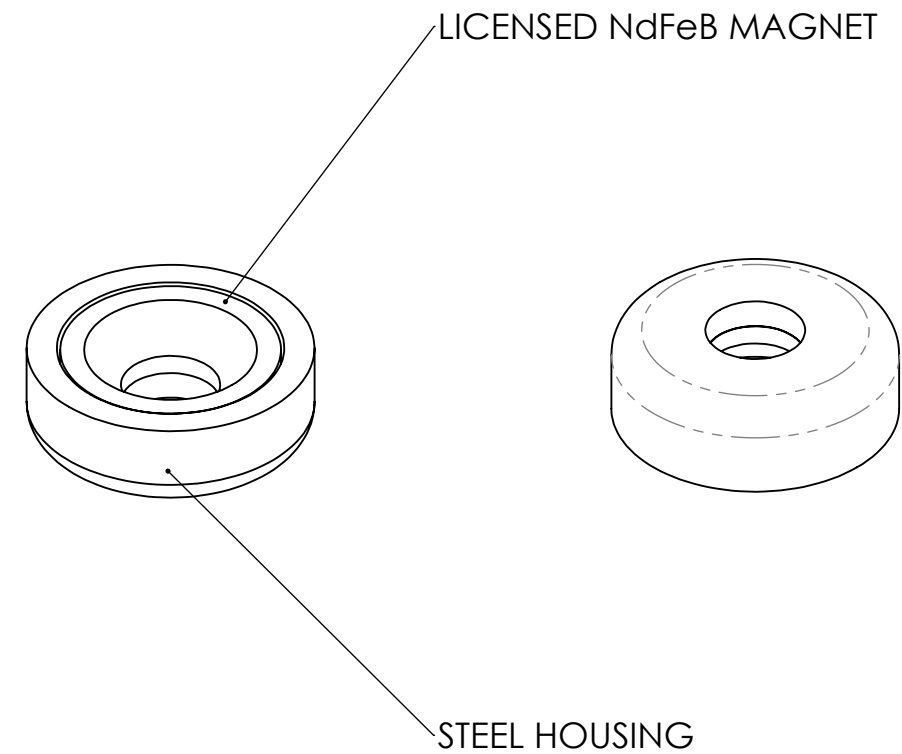
0.000  
 $\phi$  .129 -0.015 THRU  
 $\surd$   $\phi$  .225 X 82°



0.125  
 +0.005  
 -0.01



SECTION A-A




CONDITIONS
1. PART IS TO BE FREE OF SCRATCHES, DENTS, AND DEFECTS CAUSED DURING PRODUCTION.
2. PART IS TO BE FREE OF GREASE, AND DISCOLORATION ON ALL SURFACES.
3. NORTH POLARITY OF MAGNET EXPOSED

MAGNETIC PROPERTIES
MATERIAL: LICENSED NdFeB
GRADE: 40M
COATING: NICKEL (Ni-Cu-Ni)
MAGNETIZED: YES, AXIAL
RESIDUAL INDUCTION (Br): 12.5-12.8 KG
COERCIVE FORCE (HcB): ≥11.4 KOe
INTRINSIC COERCIVE FORCE (Hci): ≥12.0 KOe
MAXIMUM ENERGY PRODUCT (Bhmax): 38-41 MGOe
MAXIMUM OPERATIONAL TEMPERATURE: 80C / 176F

PROPRIETARY AND CONFIDENTIAL	UNLESS OTHERWISE SPECIFIED
THE INFORMATION CONTAINED IN THIS DRAWING IS THE SOLE PROPERTY OF AMAZING MAGNETS LLC ANY REPRODUCTION IN PART OR AS A WHOLE WITHOUT THE WRITTEN PERMISSION OF AMAZING MAGNETS LLC IS PROHIBITED.	DIMENSIONS ARE IN INCHES TOLERANCES: FRACTIONAL ± 1/64 ANGULAR: MACH ± 1° TWO PLACE DECIMAL ± 0.01 THREE PLACE DECIMAL ± 0.01
CAGE CODE <b>4R1R7</b>	DO NOT SCALE DRAWING

NAME	DATE
DRAWN CW	5/14/2020
CHECKED SW	6/11/2020
COMMENTS: ALL EDGES BROKEN 0.025" MAX	



**AMAZING MAGNETS®**

TITLE: CUPT375		
SIZE <b>B</b>	DWG. NO. CUPT375-SPECS	REV <b>A</b>

4

3

2

1