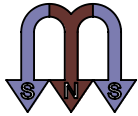
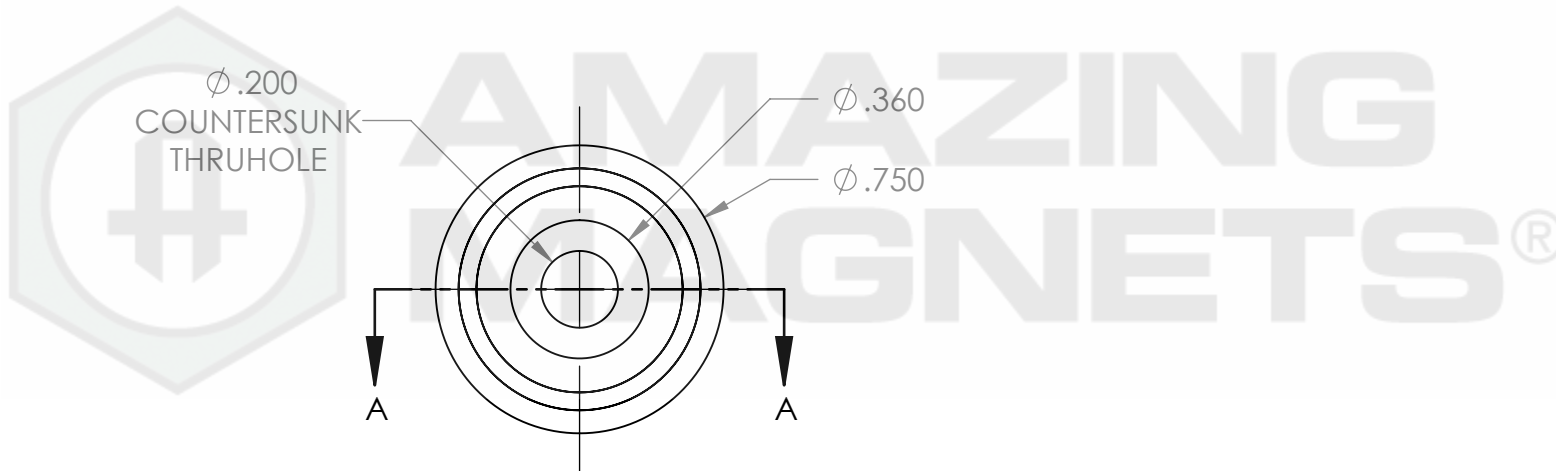
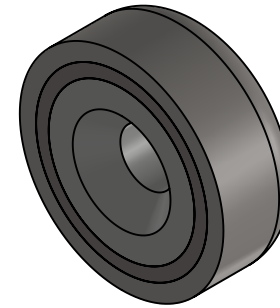
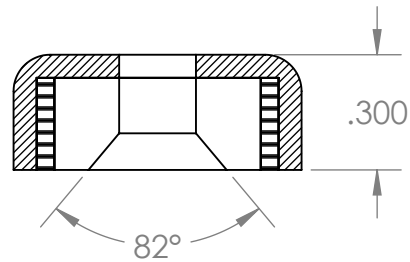


SOUTH POLARITY WARPED  
BY STEEL HOUSING TO  
FACE THE OTHER DIRECTION



SECTION A-A



GRADE: <b>N40</b>	<b>PROPRIETARY AND CONFIDENTIAL</b>	<b>UNLESS OTHERWISE SPECIFIED:</b>	NAME	DATE	
MAGNETIZED: <b>YES</b>	THE INFORMATION CONTAINED IN THIS DRAWING IS THE SOLE PROPERTY OF AMAZING MAGNETS LLC. ANY REPRODUCTION IN PART OR AS A WHOLE WITHOUT THE WRITTEN PERMISSION OF AMAZING MAGNETS LLC IS PROHIBITED.	DIMENSIONS ARE IN INCHES TOLERANCES: FRACTIONAL $\pm 1/64$ ANGULAR: MACH $\pm 1^\circ$ TWO PLACE DECIMAL $\pm 0.01$ THREE PLACE DECIMAL $\pm 0.005$	DRAWN	LB	1/25/2012
RESIDUAL INDUCTION (Br): <b>12.5-12.8 KG</b>			CHECKED	TB	1/25/2012
COERCIVE FORCE (Hc): $\geq 11.4$ KOe			COMMENTS: ALL EDGES BROKEN 0.025 MAX		
INTRINSIC COERCIVE FORCE (Hci): $\geq 12.0$ KOe			MATERIAL:	<b>NdFeB</b>	
MAX. ENERGY PRODUCT (BHmax): <b>38-41 MGOe</b>			FINISH:	<b>Ni-Cu-Ni</b> (silver in Color)	
MAX OPERATIONAL TEMP: <b>80C / 176F</b>	CAGE CODE <b>4R1R7</b>	DO NOT SCALE DRAWING			



**AMAZING  
MAGNETS®**

TITLE: <b>CUPT750</b>		
SIZE <b>A</b>	DWG. NO. CUPT750-SPECS	REV <b>0</b>
SCALE 2 : 1		

5

4

3

2

1