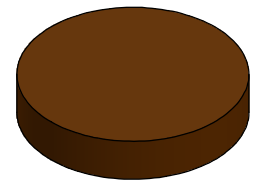
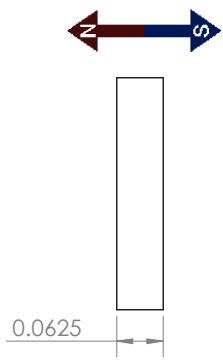
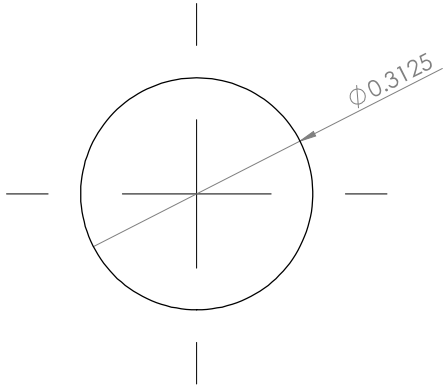


4 3 2 1

B

A



B

A

CONDITIONS	MAGNETIC PROPERTIES
1. PART IS TO BE FREE OF SCRATCHES, DENTS, AND DEFECTS CAUSED DURING PRODUCTION. 2. PART IS TO BE FREE OF GREASE, AND DISCOLORATION ON ALL SURFACES.	MATERIAL: Licensed NdFeB GRADE: N40 COATING: EVERLUBE MAGNETIZED: YES, AXIAL *RESIDUAL INDUCTION (Br): 12.5-12.8 KG COERCIVE FORCE (HcB): ≥11.4 KOe INTRINSIC COERCIVE FORCE (Hci): ≥12.0 KOe MAXIMUM ENERGY PRODUCT (Bhmax): 38-41 MGOe MAXIMUM OPERATIONAL TEMPERATURE: 80C / 176F

PROPRIETARY AND CONFIDENTIAL	UNLESS OTHERWISE SPECIFIED	NAME	DATE
THE INFORMATION CONTAINED IN THIS DRAWING IS THE SOLE PROPERTY OF AMAZING MAGNETS LLC. ANY REPRODUCTION IN PART OR AS A WHOLE WITHOUT THE WRITTEN PERMISSION OF AMAZING MAGNETS LLC IS PROHIBITED.	DIMENSIONS ARE IN INCHES TOLERANCES: FRACTIONAL ± 1/64 ANGULAR: MACH ± 1° TWO PLACE DECIMAL ± 0.01 THREE PLACE DECIMAL ± 0.004	DRAWN CW	12/8/2020
CAGE CODE 4R1R7	DO NOT SCALE DRAWING	CHECKED SW	1/6/2021 COMMENTS: ALL EDGES BROKEN 0.025" MAX


AMAZING MAGNETS®

TITLE: D063B2-EVR

SIZE B	DWG. NO. D063B2-EVR-SPECS	REV A
------------------	------------------------------	-----------------

4 3 2 1