

4

3

2

1

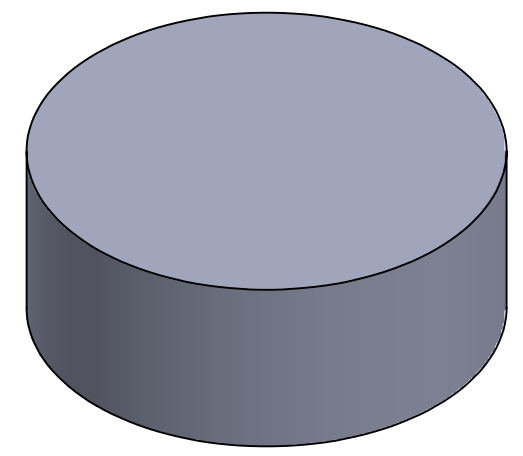
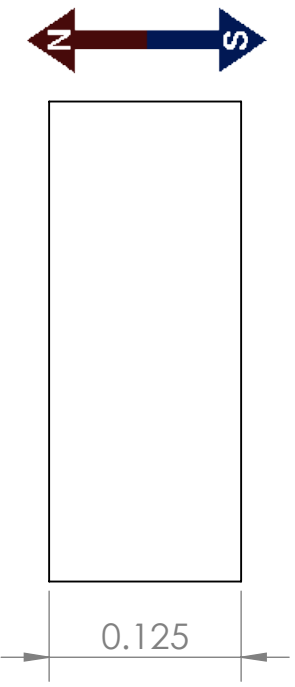
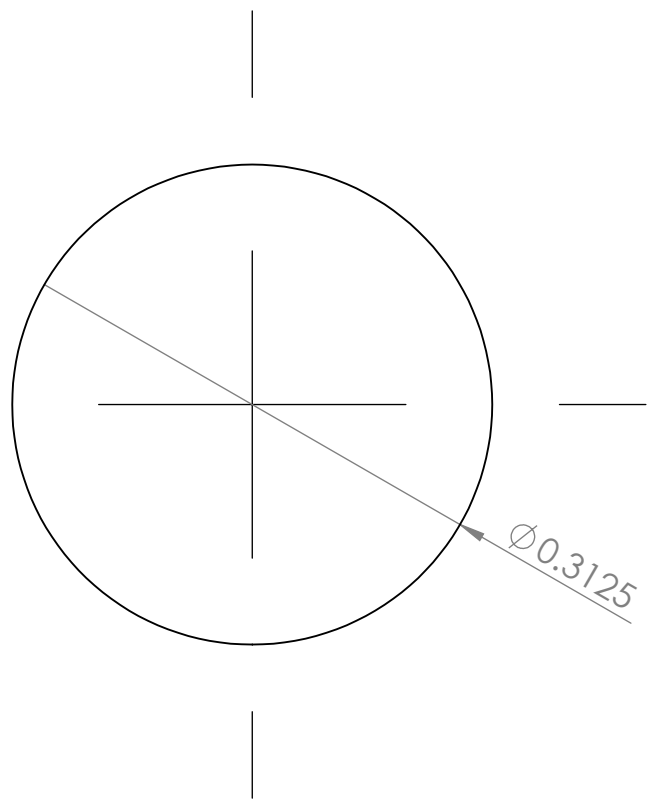
REVISIONS				
ZONE	REV.	DESCRIPTION	DATE	APPROVED
	A	INITIAL RELEASE	3/6/2019	SW

B

B

A

A



CONDITIONS

- PART IS TO BE FREE OF SCRATCHES, DENTS, AND DEFECTS CAUSED DURING PRODUCTION.
- PART IS TO BE FREE OF GREASE, AND DISCOLORATION ON ALL SURFACES.

MAGNETIC PROPERTIES

MATERIAL: NdFeB
 GRADE: N52
 COATING: NICKEL (Ni-Cu-Ni)
 MAGNETIZED: YES
 RESIDUAL INDUCTION (Br): 14.3-14.8 KG
 COERCIVE FORCE (HcB): ≥10.0 KOe
 INTRINSIC COERCIVE FORCE (Hci): ≥11.0 KOe
 MAXIMUM ENERGY PRODUCT (Bhmax): 50-53 MGOe
 MAXIMUM OPERATIONAL TEMPERATURE: 70C / 158F

PROPRIETARY AND CONFIDENTIAL

THE INFORMATION CONTAINED IN THIS DRAWING IS THE SOLE PROPERTY OF AMAZING MAGNETS LLC ANY REPRODUCTION IN PART OR AS A WHOLE WITHOUT THE WRITTEN PERMISSION OF AMAZING MAGNETS LLC IS PROHIBITED.

CAGE CODE
4R1R7

UNLESS OTHERWISE SPECIFIED

DIMENSIONS ARE IN INCHES
 TOLERANCES:
 FRACTIONAL ± 1/64
 ANGULAR: MACH ± 1°
 TWO PLACE DECIMAL ± 0.01
 THREE PLACE DECIMAL ± 0.004

DO NOT SCALE DRAWING

NAME	DATE
DRAWN CW	3/6/2019
CHECKED SW	3/6/2019

COMMENTS:
 ALL EDGES BROKEN 0.025" MAX



TITLE: D125B2-N52		
SIZE B	DWG. NO. D125B2-N52-SPECS	REV A

4

3

2

1