

AMAZING
MAGNETS®




GRADE: N45
MAGNETIZED: YES
RESIDUAL INDUCTION (Br): 13.2-13.8 KG
COERCIVE FORCE (Hc): ≥ 11.5 KOe
INTRINSIC COERCIVE FORCE (Hci): ≥ 12.0 KOe
MAX. ENERGY PRODUCT (BHmax): 43-46 MGOe
MAX OPERATIONAL TEMP: 80C / 176F

PROPRIETARY AND CONFIDENTIAL
THE INFORMATION CONTAINED IN THIS DRAWING IS THE SOLE PROPERTY OF AMAZING MAGNETS LLC. ANY REPRODUCTION IN PART OR AS A WHOLE WITHOUT THE WRITTEN PERMISSION OF AMAZING MAGNETS LLC IS PROHIBITED.
CAGE CODE 4R1R7

UNLESS OTHERWISE SPECIFIED:
DIMENSIONS ARE IN INCHES TOLERANCES: FRACTIONAL ± 1/64 ANGULAR: MACH ± 1° TWO PLACE DECIMAL ± 0.01 THREE PLACE DECIMAL ± 0.005
MATERIAL: NdFeB
FINISH: Ni-Cu-Ni (silver in Color)
DO NOT SCALE DRAWING

NAME	DATE
DRAWN LB	12/13/2011
CHECKED TB	12/13/2011
COMMENTS: ALL EDGES BROKEN 0.025 MAX	

 AMAZING MAGNETS®		
TITLE:		D188B2
SIZE	DWG. NO.	REV
A	D188B2-SPECS	0
SCALE 4 : 1		

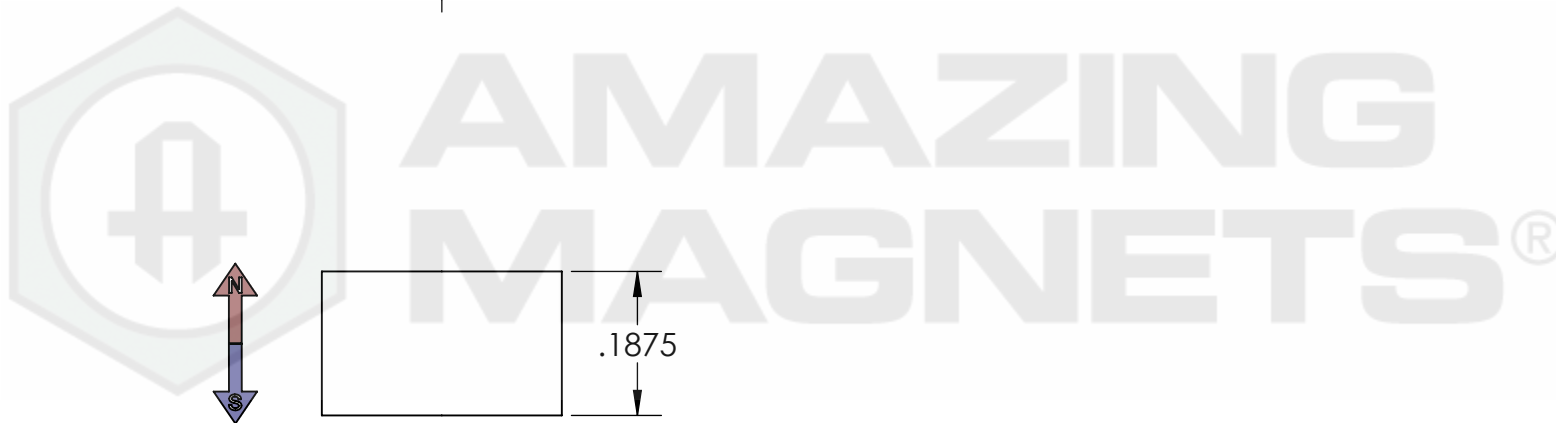
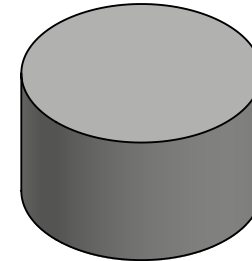
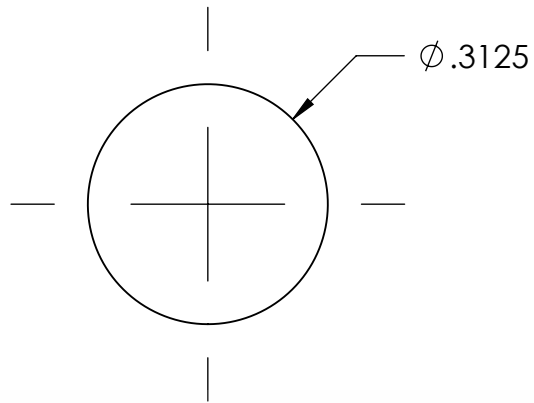
5

4

3

2

1




GRADE: N45
MAGNETIZED: YES
RESIDUAL INDUCTION (Br): 13.2-13.8 KG
COERCIVE FORCE (Hc): ≥ 11.5 KOe
INTRINSIC COERCIVE FORCE (Hci): ≥ 12.0 KOe
MAX. ENERGY PRODUCT (BHmax): 43-46 MGOe
MAX OPERATIONAL TEMP: 80C / 176F

PROPRIETARY AND CONFIDENTIAL
THE INFORMATION CONTAINED IN THIS DRAWING IS THE SOLE PROPERTY OF AMAZING MAGNETS LLC. ANY REPRODUCTION IN PART OR AS A WHOLE WITHOUT THE WRITTEN PERMISSION OF AMAZING MAGNETS LLC IS PROHIBITED.
CAGE CODE 4R1R7

UNLESS OTHERWISE SPECIFIED:
DIMENSIONS ARE IN INCHES TOLERANCES: FRACTIONAL ± 1/64 ANGULAR: MACH ± 1° TWO PLACE DECIMAL ± 0.01 THREE PLACE DECIMAL ± 0.005
MATERIAL: NdFeB
FINISH: Ni-Cu-Ni (silver in Color)
DO NOT SCALE DRAWING

NAME	DATE
DRAWN LB	12/13/2011
CHECKED TB	12/13/2011
COMMENTS: ALL EDGES BROKEN 0.025 MAX	

 AMAZING MAGNETS®		
TITLE:		D188B2
SIZE	DWG. NO.	REV
A	D188B2-SPECS	0
SCALE 4 : 1		

5

4

3

2

1