

4

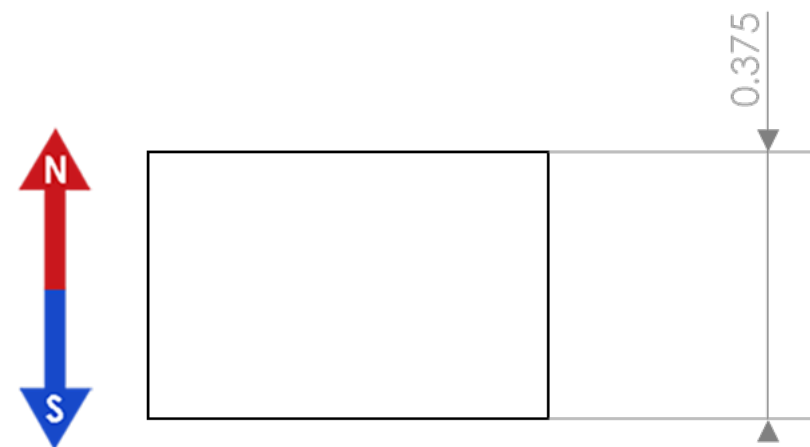
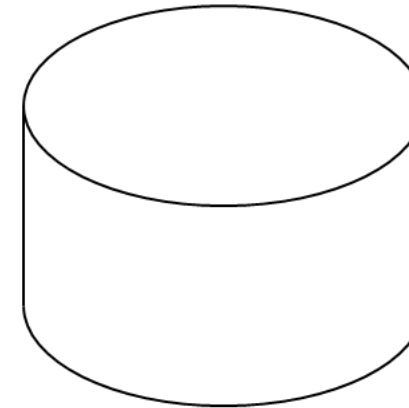
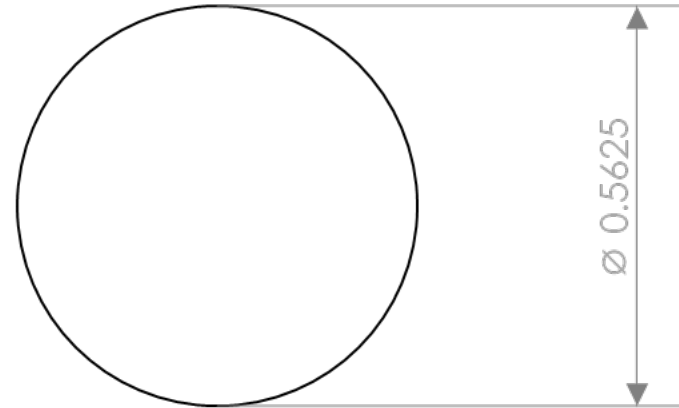
3

2

1

REVISIONS

ZONE	REV.	DESCRIPTION	DATE	APPROVED
SHEET1	REVO	INITIAL RELEASE	6/5/2020	Witte S.



CONDITIONS

- PART IS TO BE FREE OF SCRATCHES, DENTS, AND DEFECTS CAUSED DURING PRODUCTION.
- PART IS TO BE FREE OF GREASE, AND DISCOLORATION ON ALL SURFACES.
- PARTS MUST BE PACKAGED IN A MANOR SUITABLE TO AVOID DAMAGE DURING TRANSPORT, STORAGE, AND HANDLING

MAGNETIC PROPERTIES

MATERIAL: LICENSED NdFeB
 GRADE: N42
 COATING: Nickel (Ni-Cu-Ni)
 MAGNETIZED: AXIAL
 Br (KG): 12.8-13.2
 HcB (KOe): ≥ 11.5
 Hci (KOe): ≥ 12.0
 BHmax (MGOe): 40-43
 MAXIMUM TEMPERATURE: 80C / 176F

PROPRIETARY AND CONFIDENTIAL

THE INFORMATION CONTAINED IN THIS DRAWING IS THE SOLE PROPERTY OF AMAZING MAGNETS LLC ANY REPRODUCTION IN PART OR AS A WHOLE WITHOUT THE WRITTEN PERMISSION OF AMAZING MAGNETS LLC IS PROHIBITED.

CAGE CODE
4R1R7

UNLESS OTHERWISE SPECIFIED

DIMENSIONS ARE IN INCHES
 TOLERANCES:
 ANGULAR: MACH $\pm 1^\circ$
 TWO PLACE DECIMAL ± 0.005 "
 THREE PLACE DECIMAL ± 0.004 "

DO NOT SCALE DRAWING

NAME	DATE
DRAWN Pearson C.	6/5/2020
CHECKED Witte S.	6/5/2020

COMMENTS:



TITLE: **D375D2-N42**

SIZE	DWG. NO.	REV
B	D375D2-N42-SPECS	0

4

3

2

1

B

B

A

A