

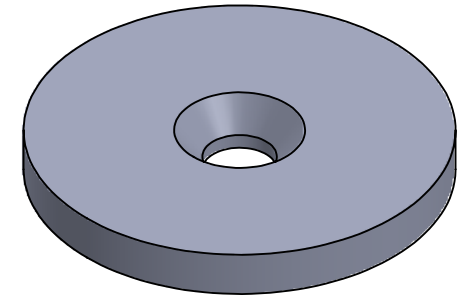
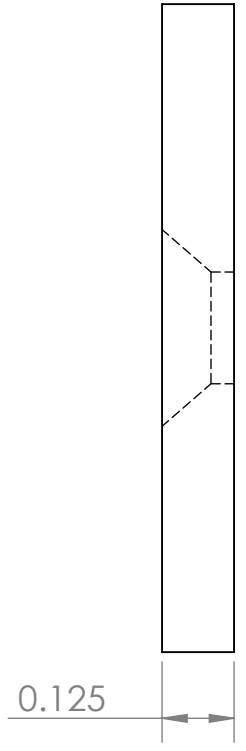
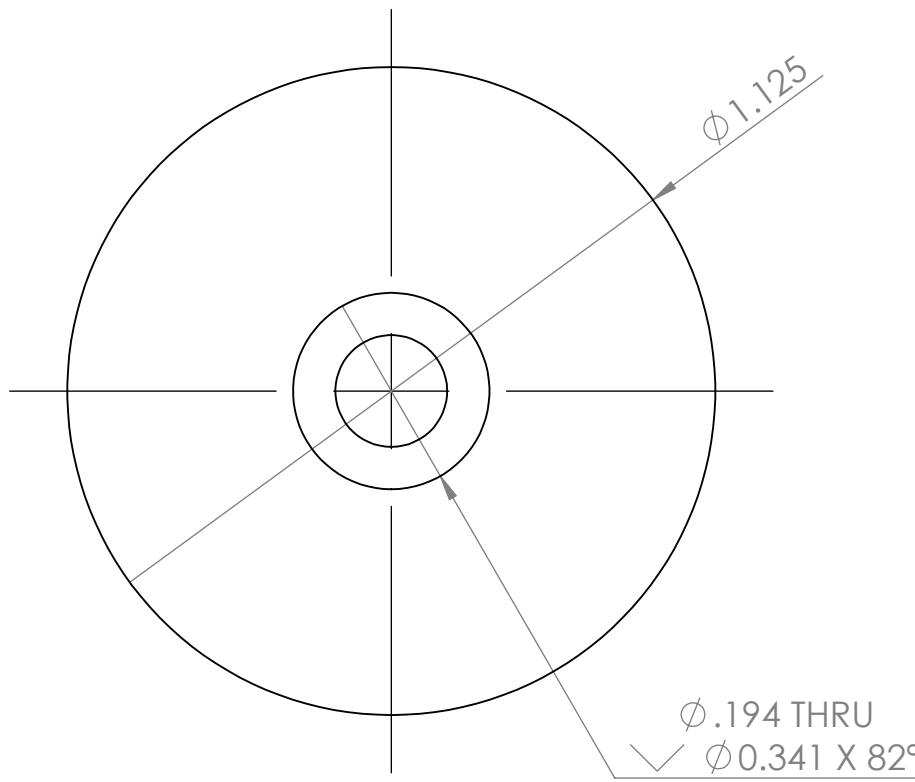
4

3

2

1

REVISIONS				
ZONE	REV.	DESCRIPTION	DATE	APPROVED
	A	INITIAL RELEASE	10/25/2018	SW



B

B

A

A

CONDITIONS

- PART IS TO BE FREE OF SCRATCHES, DENTS, AND DEFECTS CAUSED DURING PRODUCTION.
- PART IS TO BE FREE OF GREASE, AND DISCOLORATION ON ALL SURFACES.
- COUNTERSINK FEATURE ON SOUTH POLARITY

MAGNETIC PROPERTIES

MATERIAL: NdFeB  
 GRADE: N40  
 COATING: NICKEL (Ni-Cu-Ni)  
 MAGNETIZED: YES  
 RESIDUAL INDUCTION (Br): 12.5-12.8 KG  
 COERCIVE FORCE (HcB):  $\geq 11.4$  KOe  
 INTRINSIC COERCIVE FORCE (Hci):  $\geq 12.0$  KOe  
 MAXIMUM ENERGY PRODUCT (Bhmax): 38-41 MGOe  
 MAXIMUM OPERATIONAL TEMPERATURE: 80C / 176F

PROPRIETARY AND CONFIDENTIAL

THE INFORMATION CONTAINED IN THIS DRAWING IS THE SOLE PROPERTY OF AMAZING MAGNETS LLC. ANY REPRODUCTION IN PART OR AS A WHOLE WITHOUT THE WRITTEN PERMISSION OF AMAZING MAGNETS LLC IS PROHIBITED.

CAGE CODE  
**4R1R7**

UNLESS OTHERWISE SPECIFIED

DIMENSIONS ARE IN INCHES  
 TOLERANCES:  
 FRACTIONAL  $\pm 1/64$   
 ANGULAR: MACH  $\pm 1^\circ$   
 TWO PLACE DECIMAL  $\pm 0.01$   
 THREE PLACE DECIMAL  $\pm 0.004$

DO NOT SCALE DRAWING

NAME	DATE
DRAWN CW	10/25/2018
CHECKED SW	10/25/2018

COMMENTS:  
 ALL EDGES BROKEN 0.025" MAX



TITLE: DH125-1125-FS		
SIZE <b>B</b>	DWG. NO. DH125-1125-FS-SPECS	REV <b>A</b>

4

3

2

1