

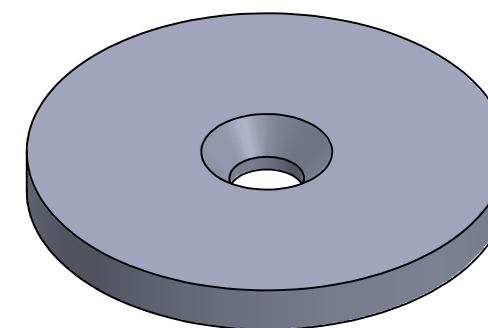
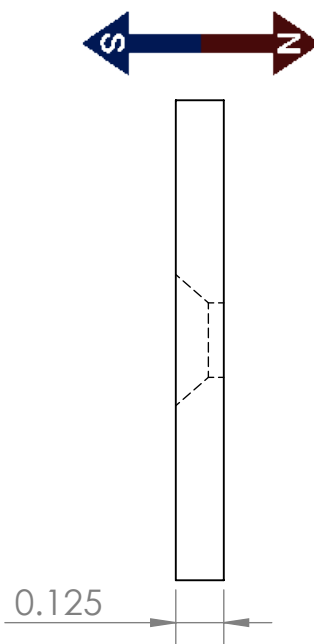
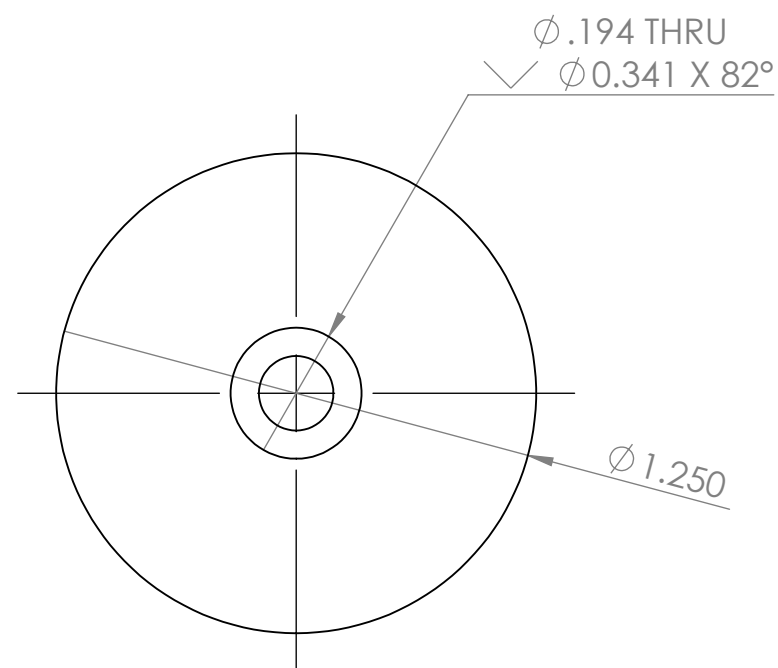
4

3

2

1

REVISIONS				
ZONE	REV.	DESCRIPTION	DATE	APPROVED
	A	INITIAL RELEASE	5/4/2020	SW



CONDITIONS

- PART IS TO BE FREE OF SCRATCHES, DENTS, AND DEFECTS CAUSED DURING PRODUCTION.
- PART IS TO BE FREE OF GREASE, AND DISCOLORATION ON ALL SURFACES.
- COUNTERSINK ON SOUTH POLARITY

MAGNETIC PROPERTIES

MATERIAL: NdFeB
 GRADE: N40
 COATING: NICKEL (Ni-Cu-Ni)
 MAGNETIZED: YES, AXIAL
 RESIDUAL INDUCTION (Br): 12.5-12.8 KG
 COERCIVE FORCE (HcB): ≥ 11.4 KOe
 INTRINSIC COERCIVE FORCE (Hci): ≥ 12.0 KOe
 MAXIMUM ENERGY PRODUCT (Bhmax): 38-41 MGOe
 MAXIMUM OPERATIONAL TEMPERATURE: 80C / 176F

PROPRIETARY AND CONFIDENTIAL

THE INFORMATION CONTAINED IN THIS DRAWING IS THE SOLE PROPERTY OF AMAZING MAGNETS LLC ANY REPRODUCTION IN PART OR AS A WHOLE WITHOUT THE WRITTEN PERMISSION OF AMAZING MAGNETS LLC IS PROHIBITED.

CAGE CODE
4R1R7

UNLESS OTHERWISE SPECIFIED

DIMENSIONS ARE IN INCHES
 TOLERANCES:
 FRACTIONAL $\pm 1/64$
 ANGULAR: MACH $\pm 1^\circ$
 TWO PLACE DECIMAL ± 0.01
 THREE PLACE DECIMAL ± 0.004

DO NOT SCALE DRAWING

NAME	DATE
DRAWN CW	5/4/2020
CHECKED SW	5/4/2020

COMMENTS:
ALL EDGES BROKEN 0.025" MAX



TITLE: DH125J-FS

SIZE	DWG. NO.	REV
B	DH125J-FS-SPECS	A

4

3

2

1

B

B

A

A