

4

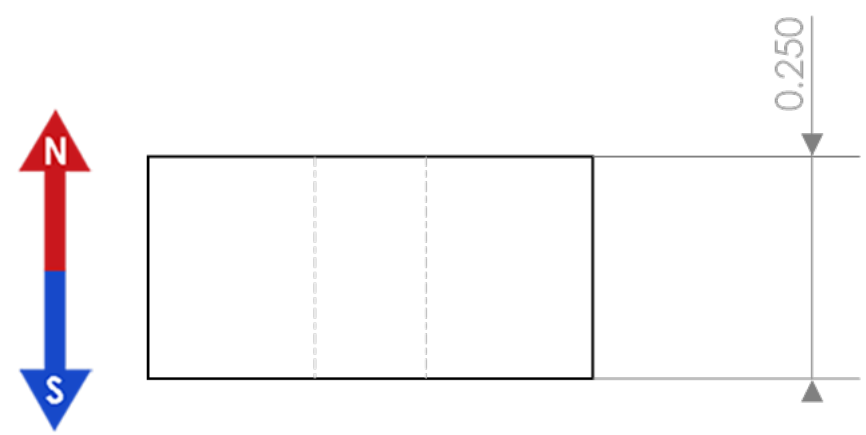
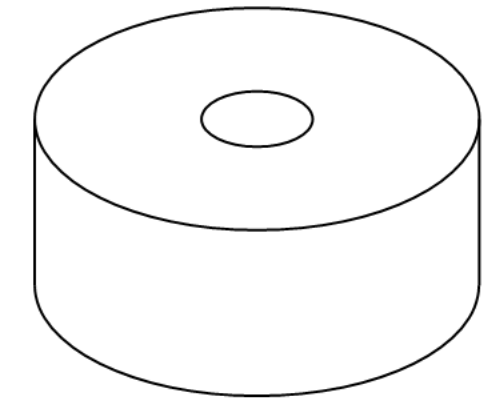
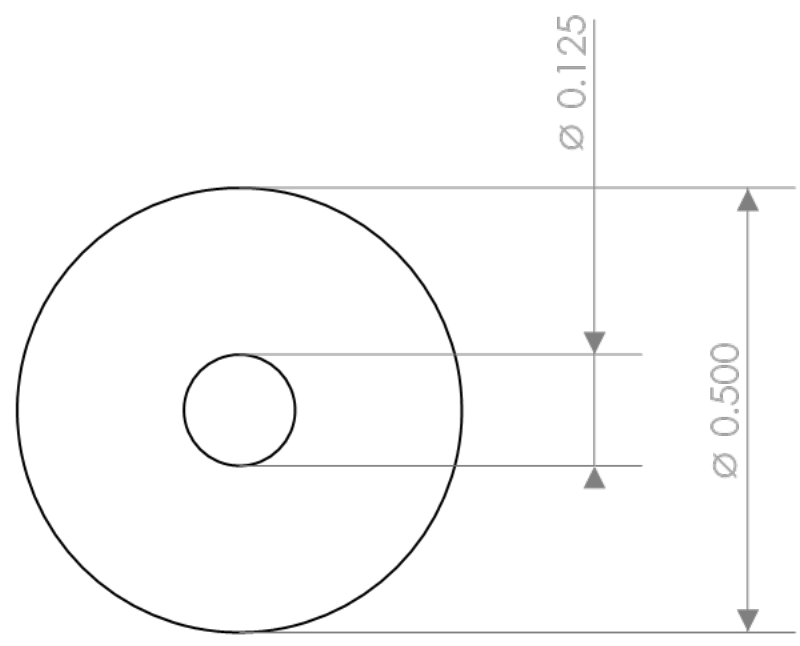
3

2

1

REVISIONS

ZONE	REV.	DESCRIPTION	DATE	APPROVED
SHEET1	REVO	INITIAL RELEASE	6/19/2020	Witte S.



CONDITIONS

- PART IS TO BE FREE OF SCRATCHES, DENTS, AND DEFECTS CAUSED DURING PRODUCTION.
- PART IS TO BE FREE OF GREASE, AND DISCOLORATION ON ALL SURFACES.
- PARTS MUST BE PACKAGED IN A MANOR SUITABLE TO AVOID DAMAGE DURING TRANSPORT, STORAGE, AND HANDLING

MAGNETIC PROPERTIES

MATERIAL: LICENSED NdFeB  
 GRADE: N42  
 COATING: Nickel (Ni-Cu-Ni)  
 MAGNETIZED: AXIAL  
 Br (KG): 12.8-13.2  
 HcB (KOe): ≥11.5  
 Hci (KOe): ≥12.0  
 BHmax (MGOe): 40-43  
 MAXIMUM TEMPERATURE: 80C / 176F

PROPRIETARY AND CONFIDENTIAL

THE INFORMATION CONTAINED IN THIS DRAWING IS THE SOLE PROPERTY OF AMAZING MAGNETS LLC ANY REPRODUCTION IN PART OR AS A WHOLE WITHOUT THE WRITTEN PERMISSION OF AMAZING MAGNETS LLC IS PROHIBITED.

CAGE CODE  
**4R1R7**

UNLESS OTHERWISE SPECIFIED

DIMENSIONS ARE IN INCHES  
 TOLERANCES:  
 ANGULAR: MACH ± 1°  
 TWO PLACE DECIMAL ± 0.005"  
 THREE PLACE DECIMAL ± 0.004"

DO NOT SCALE DRAWING

NAME	DATE
DRAWN Pearson C.	6/19/2020
CHECKED Witte S.	6/19/2020

COMMENTS:



TITLE: <b>DH250DA-N42</b>		
SIZE <b>B</b>	DWG. NO. DH250DA-N42-SPECS	REV <b>0</b>

4

3

2

1

B

B

A

A