

4

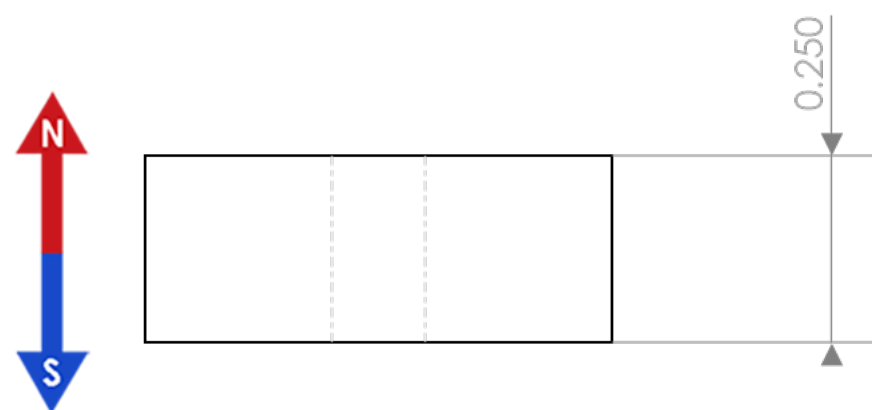
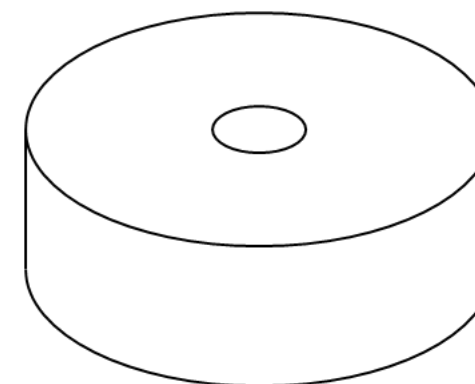
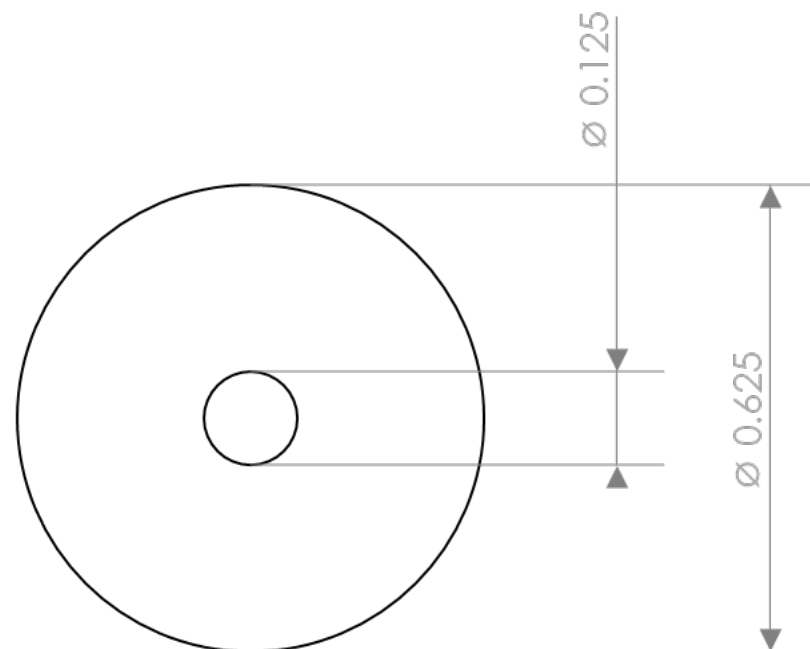
3

2

1

## REVISIONS

| ZONE   | REV. | DESCRIPTION     | DATE      | APPROVED |
|--------|------|-----------------|-----------|----------|
| SHEET1 | REVO | INITIAL RELEASE | 6/19/2020 | Witte S. |



## CONDITIONS

- PART IS TO BE FREE OF SCRATCHES, DENTS, AND DEFECTS CAUSED DURING PRODUCTION.
- PART IS TO BE FREE OF GREASE, AND DISCOLORATION ON ALL SURFACES.
- PARTS MUST BE PACKAGED IN A MANOR SUITABLE TO AVOID DAMAGE DURING TRANSPORT, STORAGE, AND HANDLING

## MAGNETIC PROPERTIES

MATERIAL: LICENSED NdFeB  
 GRADE: N42  
 COATING: Nickel (Ni-Cu-Ni)  
 MAGNETIZED: AXIAL  
 Br (KG): 12.8-13.2  
 HcB (KOe):  $\geq 11.5$   
 Hci (KOe):  $\geq 12.0$   
 BHmax (MGOe): 40-43  
 MAXIMUM TEMPERATURE: 80C / 176F

## PROPRIETARY AND CONFIDENTIAL

THE INFORMATION CONTAINED IN THIS DRAWING IS THE SOLE PROPERTY OF AMAZING MAGNETS LLC. ANY REPRODUCTION IN PART OR AS A WHOLE WITHOUT THE WRITTEN PERMISSION OF AMAZING MAGNETS LLC IS PROHIBITED.

CAGE CODE  
**4R1R7**

## UNLESS OTHERWISE SPECIFIED

DIMENSIONS ARE IN INCHES  
 TOLERANCES:  
 ANGULAR: MACH  $\pm 1^\circ$   
 TWO PLACE DECIMAL  $\pm 0.005"$   
 THREE PLACE DECIMAL  $\pm 0.004"$

DO NOT SCALE DRAWING

| NAME             | DATE      |
|------------------|-----------|
| DRAWN Pearson C. | 6/19/2020 |
| CHECKED Witte S. | 6/19/2020 |

COMMENTS:



TITLE: **DH250EA-N42**

| SIZE     | DWG. NO.          | REV      |
|----------|-------------------|----------|
| <b>B</b> | DH250EA-N42-SPECS | <b>0</b> |

4

3

2

1