

4

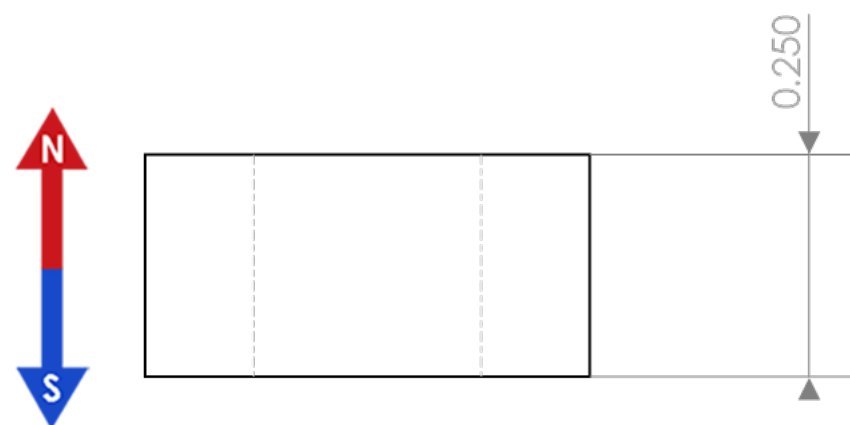
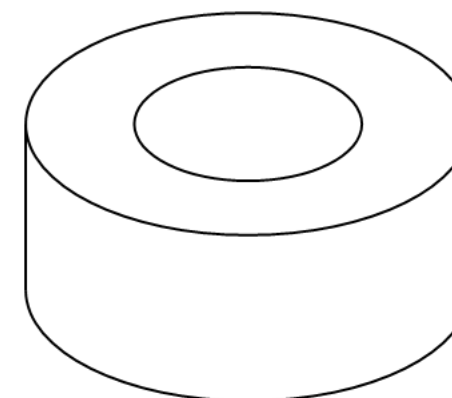
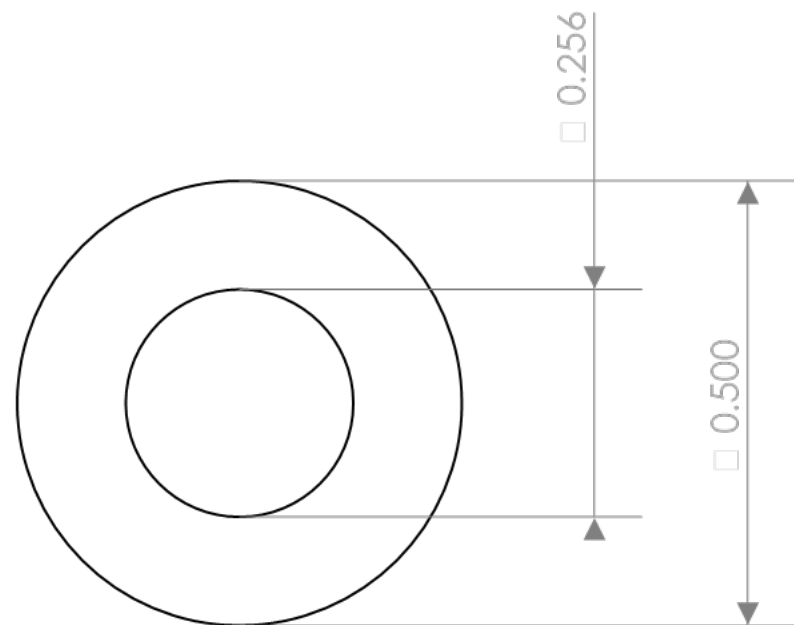
3

2

1

REVISIONS

ZONE	REV.	DESCRIPTION	DATE	APPROVED
SHEET1	REVO	INITIAL RELEASE	5/4/2020	Witte S.



CONDITIONS

- PART IS TO BE FREE OF SCRATCHES, DENTS, AND DEFECTS CAUSED DURING PRODUCTION.
- PART IS TO BE FREE OF GREASE, AND DISCOLORATION ON ALL SURFACES.
- PARTS MUST BE PACKAGED IN A MANOR SUITABLE TO AVOID DAMAGE DURING TRANSPORT, STORAGE, AND HANDLING

MAGNETIC PROPERTIES

MATERIAL: LICENSED NdFeB
 GRADE: N40
 COATING: Nickel (Ni-Cu-Ni)
 MAGNETIZED: AXIAL
 Br (KG): 12.5-12.8
 HcB (KOe): ≥11.4
 Hci (KOe): ≥12.0
 BHmax (MGOe): 38-41
 MAXIMUM TEMPERATURE: 80C / 176F

PROPRIETARY AND CONFIDENTIAL

THE INFORMATION CONTAINED IN THIS DRAWING IS THE SOLE PROPERTY OF AMAZING MAGNETS LLC. ANY REPRODUCTION IN PART OR AS A WHOLE WITHOUT THE WRITTEN PERMISSION OF AMAZING MAGNETS LLC IS PROHIBITED.

CAGE CODE
4R1R7

UNLESS OTHERWISE SPECIFIED

DIMENSIONS ARE IN INCHES
 TOLERANCES:
 ANGULAR: MACH ± 1°
 TWO PLACE DECIMAL ± 0.005"
 THREE PLACE DECIMAL ± 0.004"

DO NOT SCALE DRAWING

NAME	DATE
DRAWN Pearson C.	5/4/2020
CHECKED Witte S.	5/4/2020

COMMENTS:



TITLE: **H250-500-256**

SIZE	DWG. NO.	REV
B	H250-500-256-SPECS	0

4

3

2

1