

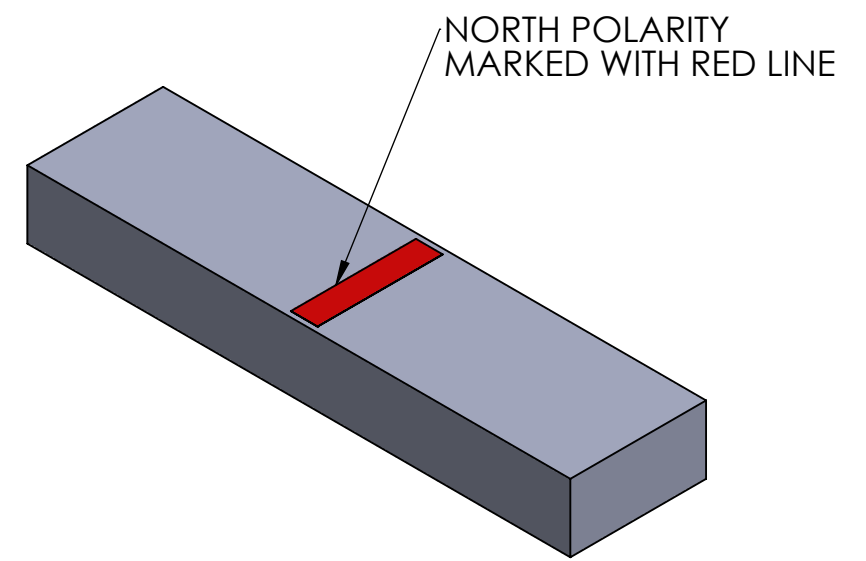
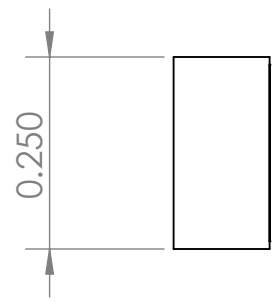
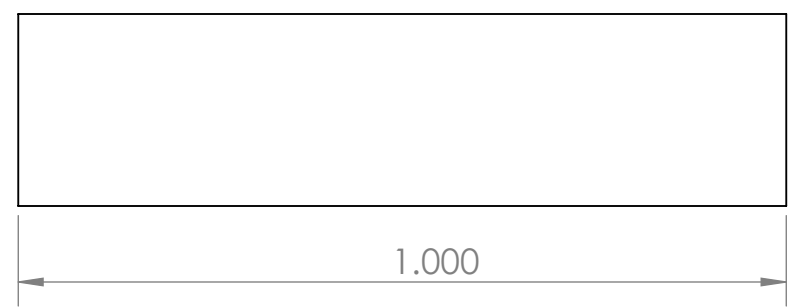
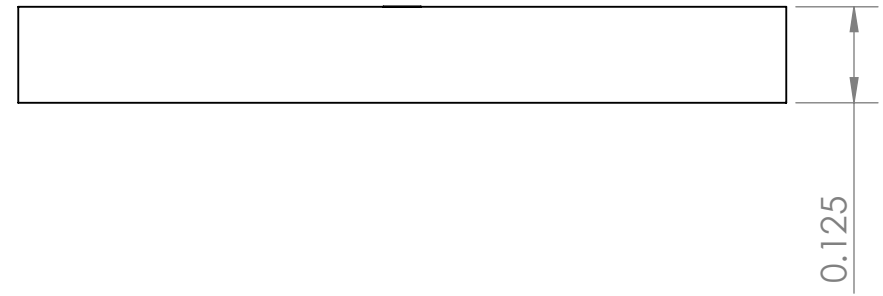
4

3

2

1

| REVISIONS | | | | |
|-----------|------|-----------------|----------|----------|
| ZONE | REV. | DESCRIPTION | DATE | APPROVED |
| | A | INITIAL RELEASE | 2/4/2020 | SW |



B

B

A

A

CONDITIONS

- PART IS TO BE FREE OF SCRATCHES, DENTS, AND DEFECTS CAUSED DURING PRODUCTION.
- PART IS TO BE FREE OF GREASE, AND DISCOLORATION ON ALL SURFACES.
- NORTH POLARITY MARKED WITH RED LINE.

MAGNETIC PROPERTIES

MATERIAL: NdFeB
 GRADE: N40
 COATING: NICKEL (Ni-Cu-Ni)
 MAGNETIZED: YES, THRU THICKNESS
 RESIDUAL INDUCTION (Br): 12.5-12.8 KG
 COERCIVE FORCE (HcB): ≥11.4 KOe
 INTRINSIC COERCIVE FORCE (Hci): ≥12.0 KOe
 MAXIMUM ENERGY PRODUCT (Bhmax): 38-41 MGOe
 MAXIMUM OPERATIONAL TEMPERATURE: 80C / 176F

PROPRIETARY AND CONFIDENTIAL

THE INFORMATION CONTAINED IN THIS DRAWING IS THE SOLE PROPERTY OF AMAZING MAGNETS LLC ANY REPRODUCTION IN PART OR AS A WHOLE WITHOUT THE WRITTEN PERMISSION OF AMAZING MAGNETS LLC IS PROHIBITED.

CAGE CODE
4R1R7

UNLESS OTHERWISE SPECIFIED

DIMENSIONS ARE IN INCHES
 TOLERANCES:
 FRACTIONAL ± 1/64
 ANGULAR: MACH ± 1°
 TWO PLACE DECIMAL ± 0.01
 THREE PLACE DECIMAL ± 0.004

DO NOT SCALE DRAWING

| NAME | DATE |
|------------|----------|
| DRAWN CW | 2/4/2020 |
| CHECKED SW | 2/4/2020 |

COMMENTS:
 ALL EDGES BROKEN 0.025" MAX



| | | |
|------------------|----------------------------|-----------------|
| TITLE: P125BH-M | | |
| SIZE B | DWG. NO. P125BH-M-SPECS | REV A |

4

3

2

1