

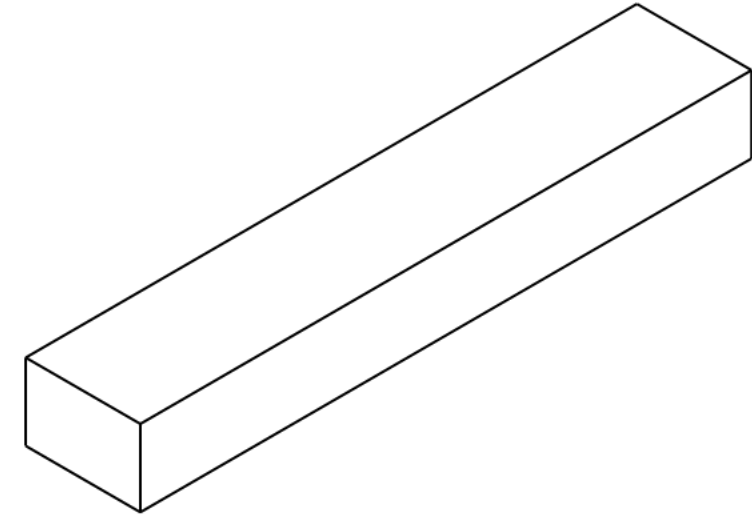
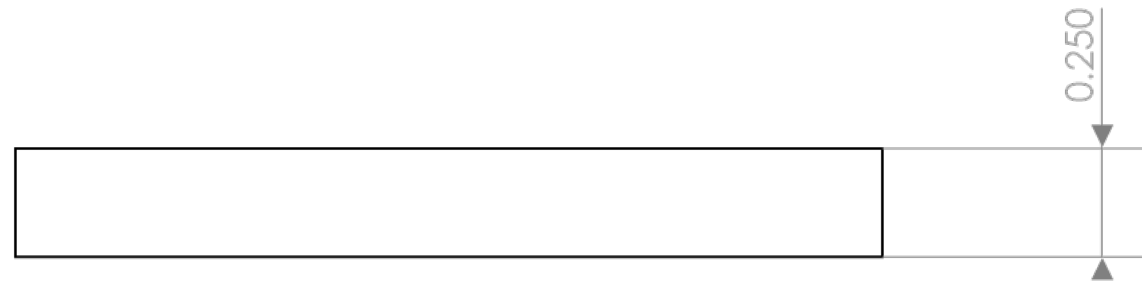
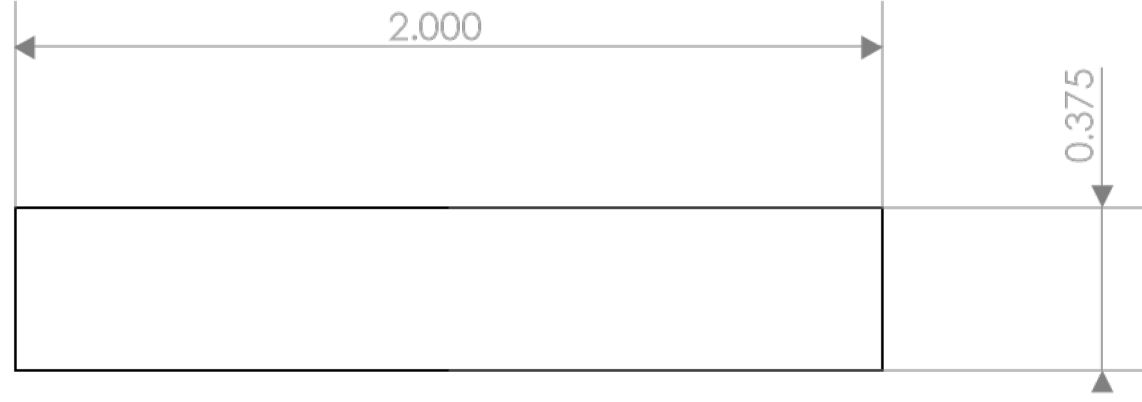
4

3

2

1

REVISIONS				
ZONE	REV.	DESCRIPTION	DATE	APPROVED
SHEET1	REVO	INITIAL RELEASE	12/17/2019	Spencer W.



CONDITIONS
<ol style="list-style-type: none"> <li>PART IS TO BE FREE OF SCRATCHES, DENTS, AND DEFECTS CAUSED DURING PRODUCTION.</li> <li>PART IS TO BE FREE OF GREASE, AND DISCOLORATION ON ALL SURFACES.</li> <li>PARTS MUST BE PACKAGED IN A MANOR SUITABLE TO AVOID DAMAGE DURING TRANSPORT, STORAGE, AND HANDLING</li> </ol>

MAGNETIC PROPERTIES
MATERIAL: LICENSED NdFeB GRADE: N42 COATING: Nickel (Ni-Cu-Ni) MAGNETIZED: THICKNESS Br (KG): 12.8-13.2 HcB (KOe): ≥11.5 Hci (KOe): ≥12.0 BHmax (MGOe): 40-43 MAXIMUM TEMPERATURE: 80C / 176F

PROPRIETARY AND CONFIDENTIAL	UNLESS OTHERWISE SPECIFIED	NAME	DATE
THE INFORMATION CONTAINED IN THIS DRAWING IS THE SOLE PROPERTY OF AMAZING MAGNETS LLC ANY REPRODUCTION IN PART OR AS A WHOLE WITHOUT THE WRITTEN PERMISSION OF AMAZING MAGNETS LLC IS PROHIBITED.	DIMENSIONS ARE IN INCHES TOLERANCES: ANGULAR: MACH ± 1° TWO PLACE DECIMAL ± 0.005" THREE PLACE DECIMAL ± 0.004"	DRAWN	Christi P. 12/17/2019
		CHECKED	Spencer W. 12/17/2019
CAGE CODE		COMMENTS:	
4R1R7			
DO NOT SCALE DRAWING			



**AMAZING MAGNETS®**

TITLE: P250CP-N42		
SIZE	DWG. NO.	REV
<b>B</b>	P250CP-N42-SPECS	<b>0</b>

4

3

2

1

B

B

A

A