

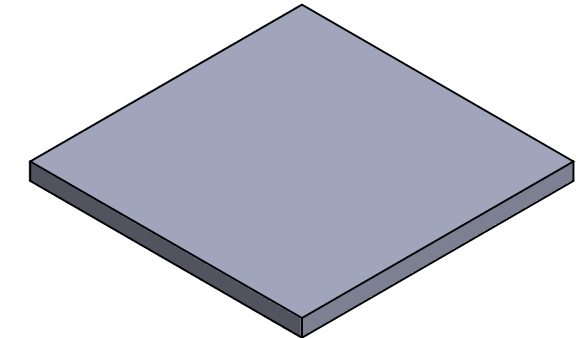
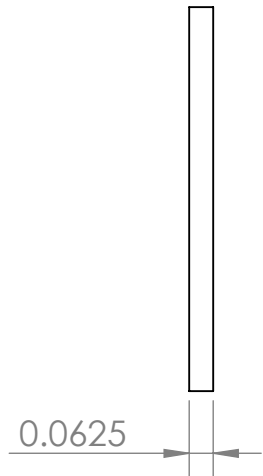
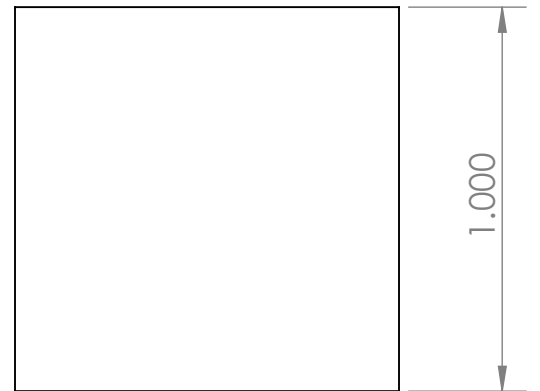
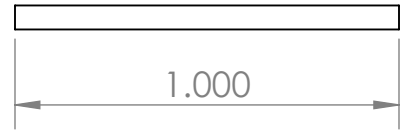
4

3

2

1

REVISIONS				
ZONE	REV.	DESCRIPTION	DATE	APPROVED
	A	INITIAL RELEASE	11/13/2018	SW



B

B

A

A

CONDITIONS

MAGNETIC PROPERTIES

- PART IS TO BE FREE OF SCRATCHES, DENTS, AND DEFECTS CAUSED DURING PRODUCTION.
- PART IS TO BE FREE OF GREASE, AND DISCOLORATION ON ALL SURFACES.

MATERIAL: NdFeB
 GRADE: N40
 COATING: NICKEL (Ni-Cu-Ni)
 MAGNETIZED: YES
 RESIDUAL INDUCTION (Br): 12.5-12.8 KG
 COERCIVE FORCE (HcB): ≥11.4 KOe
 INTRINSIC COERCIVE FORCE (Hci): ≥12.0 KOe
 MAXIMUM ENERGY PRODUCT (Bhmax): 38-41 MGOe
 MAXIMUM OPERATIONAL TEMPERATURE: 80C / 176F

PROPRIETARY AND CONFIDENTIAL
 THE INFORMATION CONTAINED IN THIS DRAWING IS THE SOLE PROPERTY OF AMAZING MAGNETS LLC ANY REPRODUCTION IN PART OR AS A WHOLE WITHOUT THE WRITTEN PERMISSION OF AMAZING MAGNETS LLC IS PROHIBITED.
 CAGE CODE
4R1R7

UNLESS OTHERWISE SPECIFIED
 DIMENSIONS ARE IN INCHES
 TOLERANCES:
 FRACTIONAL ± 1/64
 ANGULAR: MACH ± 1°
 TWO PLACE DECIMAL ± 0.01
 THREE PLACE DECIMAL ± 0.004
 DO NOT SCALE DRAWING

NAME		DATE
DRAWN	CW	11/13/2018
CHECKED	SW	11/13/2018
COMMENTS: ALL EDGES BROKEN 0.025" MAX		



TITLE: Q063H		
SIZE B	DWG. NO. Q063H-SPECS	REV A

4

3

2

1