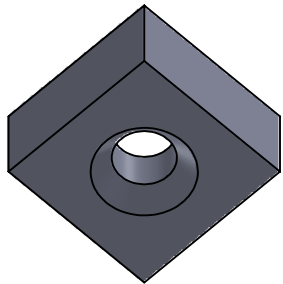
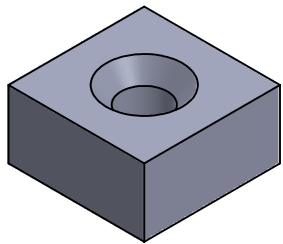
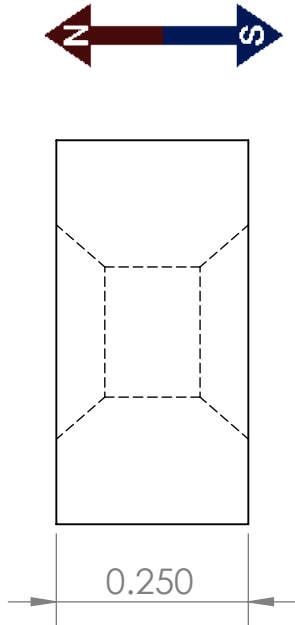
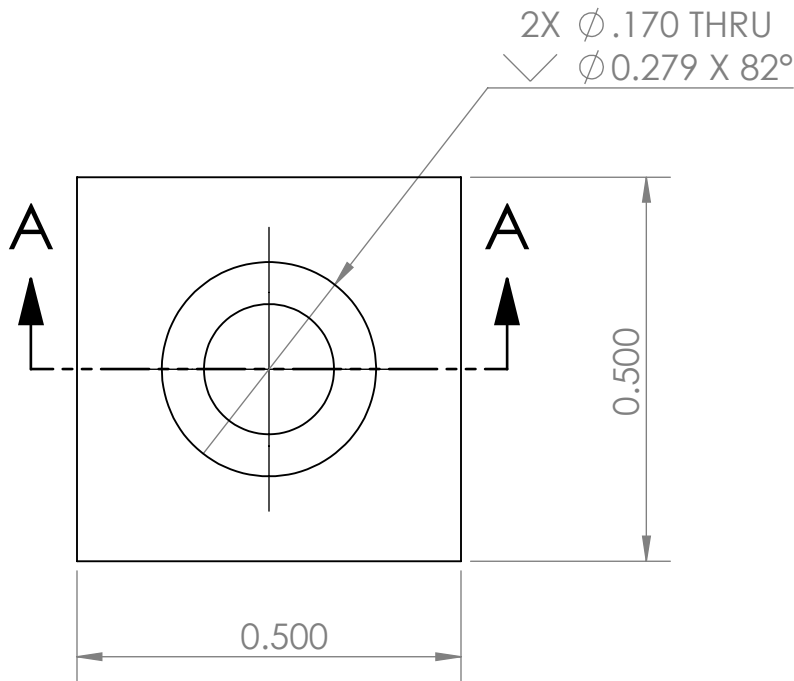



SECTION A-A  
SCALE 4 : 1



CONDITIONS	MAGNETIC PROPERTIES
<div>1. PART IS TO BE FREE OF SCRATCHES, DENTS, AND DEFECTS CAUSED DURING PRODUCTION.</div> <div>2. PART IS TO BE FREE OF GREASE, AND DISCOLORATION ON ALL SURFACES.</div> <div>3. HOLE SIZED FOR #6 SCREW.</div>	<div>MATERIAL: NdFeB</div> <div>GRADE: N42</div> <div>COATING: NICKEL (Ni-Cu-Ni)</div> <div>MAGNETIZED: YES</div> <div>RESIDUAL INDUCTION (Br): 12.8-13.2 KG</div> <div>COERCIVE FORCE (HcB): <math>\geq 11.5</math> KOe</div> <div>INTRINSIC COERCIVE FORCE (Hci): <math>\geq 12.0</math> KOe</div> <div>MAXIMUM ENERGY PRODUCT (Bhmax): 40-43 MGOe</div> <div>MAXIMUM OPERATIONAL TEMPERATURE: 80C / 176F</div>

PROPRIETARY AND CONFIDENTIAL	UNLESS OTHERWISE SPECIFIED	NAME		DATE
THE INFORMATION CONTAINED IN THIS DRAWING IS THE SOLE PROPERTY OF AMAZING MAGNETS LLC. ANY REPRODUCTION IN PART OR AS A WHOLE WITHOUT THE WRITTEN PERMISSION OF AMAZING MAGNETS LLC IS PROHIBITED.	DIMENSIONS ARE IN INCHES TOLERANCES: FRACTIONAL $\pm 1/64$ ANGULAR: MACH $\pm 1^\circ$ TWO PLACE DECIMAL $\pm 0.01$ THREE PLACE DECIMAL $\pm 0.004$	DRAWN	CW	10/5/2018
		CHECKED	SW	10/5/2018
		COMMENTS: ALL EDGES BROKEN 0.025" MAX		
CAGE CODE 4R1R7	DO NOT SCALE DRAWING			



AMAZING  
MAGNETS®

TITLE:

QH250D-F2-N42

SIZE  
B

DWG. NO.  
QH250D-F2-N42-SPECS

REV  
A