

4

3

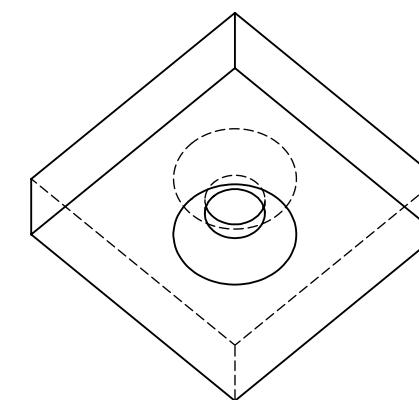
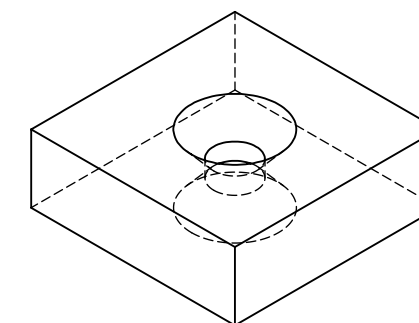
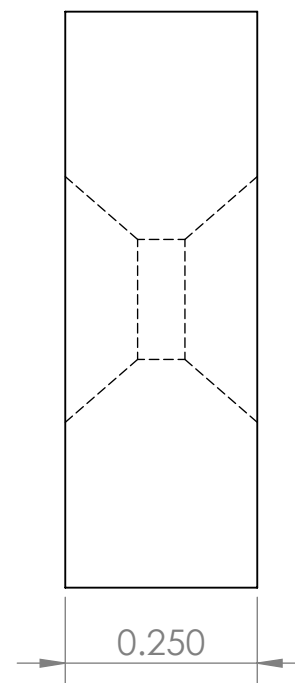
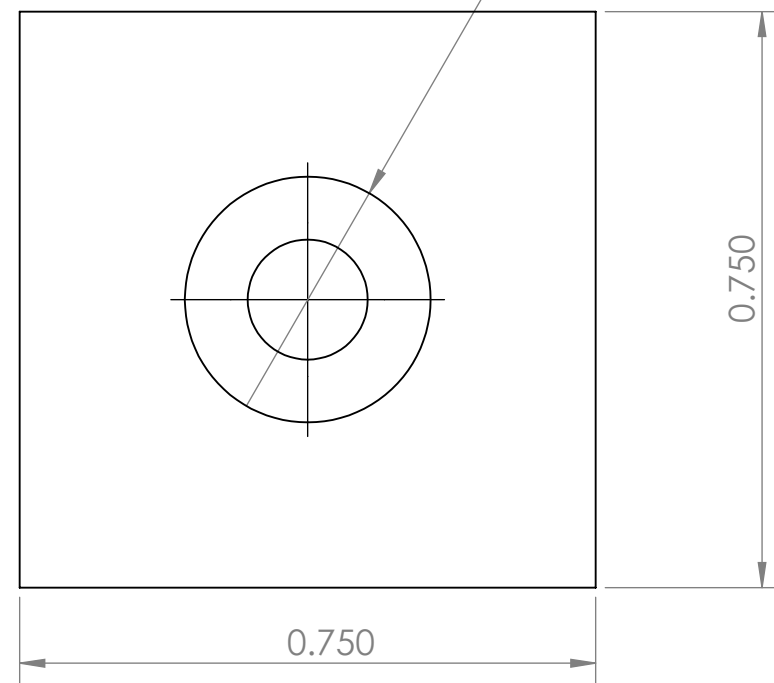
2

1

REVISIONS

ZONE	REV.	DESCRIPTION	DATE	APPROVED
	A	INITIAL RELEASE	3/26/2019	SW

2X ϕ .156 THRU
 \surd ϕ 0.320 X 82°



CONDITIONS

- PART IS TO BE FREE OF SCRATCHES, DENTS, AND DEFECTS CAUSED DURING PRODUCTION.
- PART IS TO BE FREE OF GREASE, AND DISCOLORATION ON ALL SURFACES.

MAGNETIC PROPERTIES

MATERIAL: NdFeB
 GRADE: N48
 COATING: NICKEL (Ni-Cu-Ni)
 MAGNETIZED: YES
 RESIDUAL INDUCTION (Br): 13.8-14.2 KOe
 COERCIVE FORCE (HcB): ≥ 11.6 KOe
 INTRINSIC COERCIVE FORCE (Hci): ≥ 12.0 KOe
 MAXIMUM ENERGY PRODUCT (Bhmax): 46-49 MGOe
 MAXIMUM OPERATIONAL TEMPERATURE: 80C / 176F

PROPRIETARY AND CONFIDENTIAL

THE INFORMATION CONTAINED IN THIS DRAWING IS THE SOLE PROPERTY OF AMAZING MAGNETS LLC. ANY REPRODUCTION IN PART OR AS A WHOLE WITHOUT THE WRITTEN PERMISSION OF AMAZING MAGNETS LLC IS PROHIBITED.

CAGE CODE
4R1R7

UNLESS OTHERWISE SPECIFIED

DIMENSIONS ARE IN INCHES
 TOLERANCES:
 FRACTIONAL $\pm 1/64$
 ANGULAR: MACH $\pm 1^\circ$
 TWO PLACE DECIMAL ± 0.01
 THREE PLACE DECIMAL ± 0.004

DO NOT SCALE DRAWING

NAME	DATE
DRAWN CW	3/4/2019
CHECKED SW	3/4/2019

COMMENTS:
 ALL EDGES BROKEN 0.025" MAX



TITLE: QH250F-F2-N48

SIZE	DWG. NO.	REV
B	QH250F-F2-N48-SPECS	A

4

3

2

1