

4

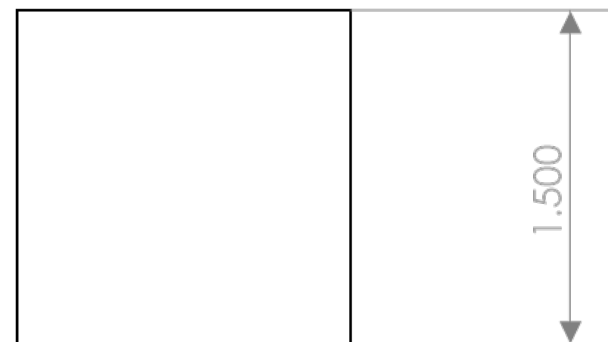
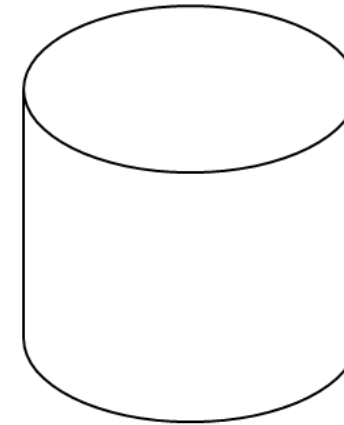
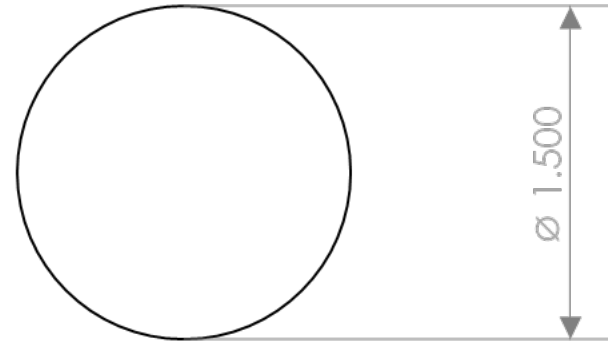
3

2

1

REVISIONS

ZONE	REV.	DESCRIPTION	DATE	APPROVED
SHEET1	REVO	INITIAL RELEASE	6/12/2020	Witte S.



CONDITIONS

- PART IS TO BE FREE OF SCRATCHES, DENTS, AND DEFECTS CAUSED DURING PRODUCTION.
- PART IS TO BE FREE OF GREASE, AND DISCOLORATION ON ALL SURFACES.
- PARTS MUST BE PACKAGED IN A MANOR SUITABLE TO AVOID DAMAGE DURING TRANSPORT, STORAGE, AND HANDLING

MAGNETIC PROPERTIES

MATERIAL: LICENSED NdFeB
 GRADE: N52
 COATING: Nickel (Ni-Cu-Ni)
 MAGNETIZED: AXIAL
 Br (KG): 14.3-14.8
 HcB (KOe): ≥ 10.0
 Hci (KOe): ≥ 11.0
 BHmax (MGOe): 50-53
 MAXIMUM TEMPERATURE: 70C / 158F

PROPRIETARY AND CONFIDENTIAL

THE INFORMATION CONTAINED IN THIS DRAWING IS THE SOLE PROPERTY OF AMAZING MAGNETS LLC ANY REPRODUCTION IN PART OR AS A WHOLE WITHOUT THE WRITTEN PERMISSION OF AMAZING MAGNETS LLC IS PROHIBITED.

CAGE CODE
4R1R7

UNLESS OTHERWISE SPECIFIED

DIMENSIONS ARE IN INCHES
 TOLERANCES:
 ANGULAR: MACH $\pm 1^\circ$
 TWO PLACE DECIMAL $\pm 0.005"$
 THREE PLACE DECIMAL $\pm 0.004"$

DO NOT SCALE DRAWING

NAME	DATE
DRAWN Pearson C.	6/12/2020
CHECKED Witte S.	6/12/2020

COMMENTS:



TITLE: **R1500L-N52**

SIZE	DWG. NO.	REV
B	R1500L-N52-SPECS	0

4

3

2

1

B

B

A

A