

4

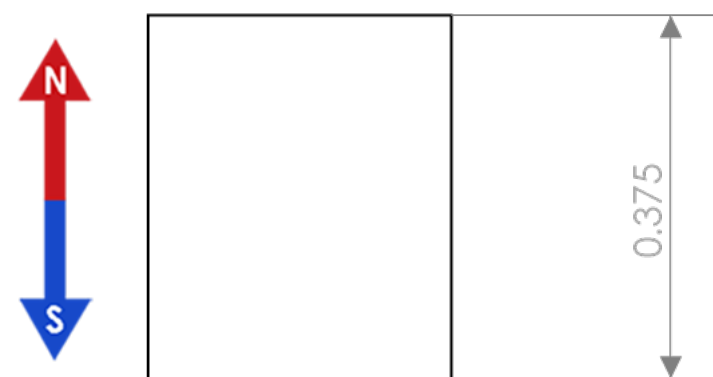
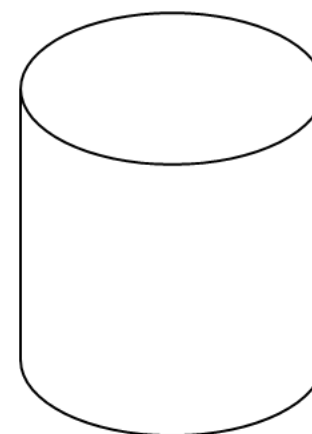
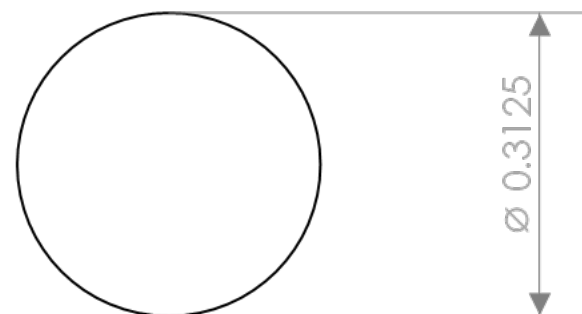
3

2

1

REVISIONS

ZONE	REV.	DESCRIPTION	DATE	APPROVED
SHEET1	REVO	INITIAL RELEASE	5/19/2020	Witte S.



CONDITIONS

- PART IS TO BE FREE OF SCRATCHES, DENTS, AND DEFECTS CAUSED DURING PRODUCTION.
- PART IS TO BE FREE OF GREASE, AND DISCOLORATION ON ALL SURFACES.
- PARTS MUST BE PACKAGED IN A MANOR SUITABLE TO AVOID DAMAGE DURING TRANSPORT, STORAGE, AND HANDLING

MAGNETIC PROPERTIES

MATERIAL: LICENSED NdFeB  
 GRADE: N42  
 COATING: Nickel (Ni-Cu-Ni)  
 MAGNETIZED: AXIAL  
 Br (KG): 12.8-13.2  
 HcB (KOe):  $\geq 11.5$   
 Hci (KOe):  $\geq 12.0$   
 BHmax (MGOe): 40-43  
 MAXIMUM TEMPERATURE: 80C / 176F

PROPRIETARY AND CONFIDENTIAL

THE INFORMATION CONTAINED IN THIS DRAWING IS THE SOLE PROPERTY OF AMAZING MAGNETS LLC. ANY REPRODUCTION IN PART OR AS A WHOLE WITHOUT THE WRITTEN PERMISSION OF AMAZING MAGNETS LLC IS PROHIBITED.

CAGE CODE  
**4R1R7**

UNLESS OTHERWISE SPECIFIED

DIMENSIONS ARE IN INCHES  
 TOLERANCES:  
 ANGULAR: MACH  $\pm 1^\circ$   
 TWO PLACE DECIMAL  $\pm 0.005"$   
 THREE PLACE DECIMAL  $\pm 0.004"$

DO NOT SCALE DRAWING

NAME	DATE
DRAWN Pearscon C.	5/19/2020
CHECKED Witte S.	5/19/2020

COMMENTS:



TITLE: **R375B2-N42**

SIZE	DWG. NO.	REV
<b>B</b>	R375B2-N42-SPECS	<b>0</b>

4

3

2

1