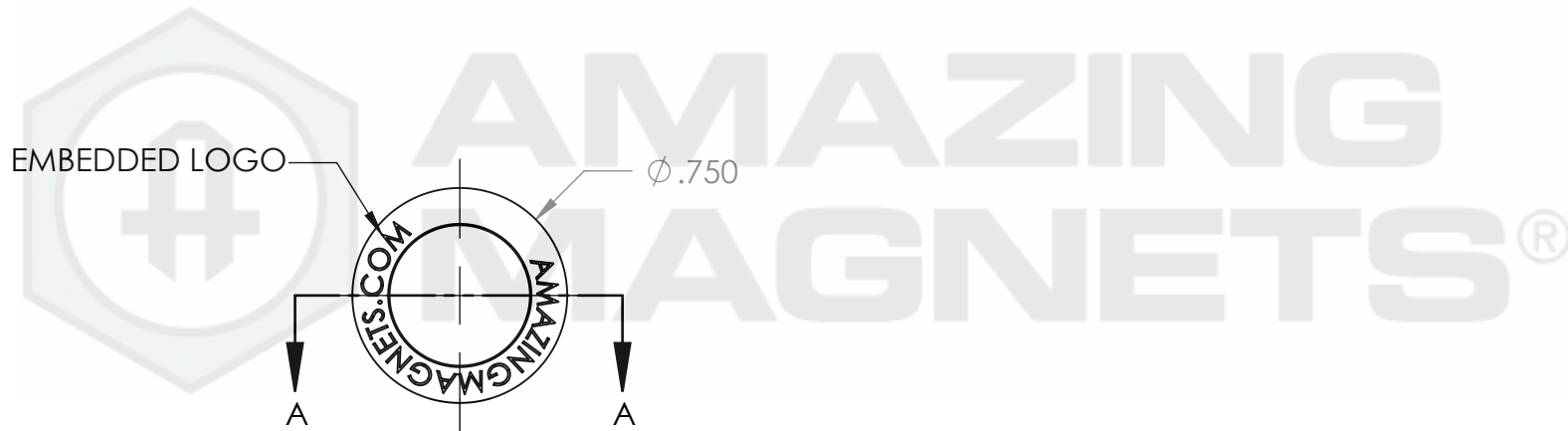
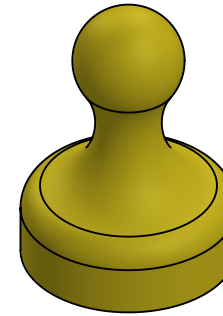
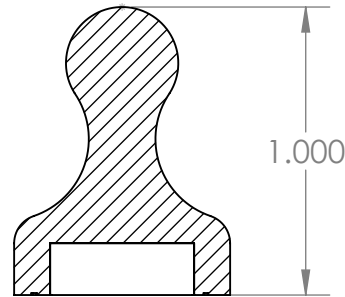



SECTION A-A



GRADE: N40	PROPRIETARY AND CONFIDENTIAL	UNLESS OTHERWISE SPECIFIED:	NAME	DATE	 AMAZING MAGNETS®		
MAGNETIZED: YES	THE INFORMATION CONTAINED IN THIS DRAWING IS THE SOLE PROPERTY OF AMAZING MAGNETS LLC. ANY REPRODUCTION IN PART OR AS A WHOLE WITHOUT THE WRITTEN PERMISSION OF AMAZING MAGNETS LLC IS PROHIBITED.	DIMENSIONS ARE IN INCHES TOLERANCES: FRACTIONAL $\pm 1/64$ ANGULAR: MACH $\pm 1^\circ$ TWO PLACE DECIMAL ± 0.01 THREE PLACE DECIMAL ± 0.005	DRAWN	LB			1/25/2012
RESIDUAL INDUCTION (Br): 12.5-12.8 KG		MATERIAL: NdFeB	CHECKED	TB	1/25/2012		TITLE: WB-YELLOW
COERCIVE FORCE (Hc): ≥ 11.4 KOe		FINISH: Ni-Cu-Ni (silver in Color)	COMMENTS: ALL EDGES BROKEN 0.025 MAX 0.5" DIA X 0.1875" THICK MAGNET HOUSED IN YELLOW ABS PLASTIC. HOLDS 25+ SHEETS OF PAPER TO WHITEBOARD. EMBEDDED LOGO (AMAZINGMAGNETS.COM)		SIZE A	DWG. NO. WB-YELLOW-SPECS	REV 0
INTRINSIC COERCIVE FORCE (Hci): ≥ 12.0 KOe		CAGE CODE 4R1R7	DO NOT SCALE DRAWING		SCALE 3:2		
MAX. ENERGY PRODUCT (BHmax): 38-41 MGOe							
MAX OPERATIONAL TEMP: 80C / 176F							