

4

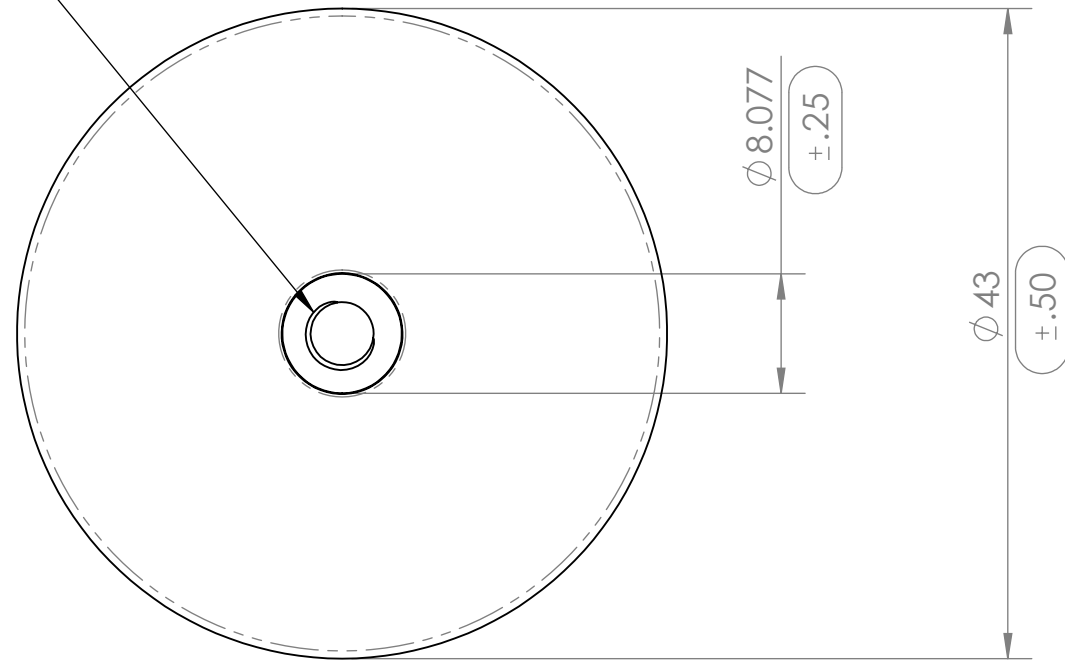
3

2

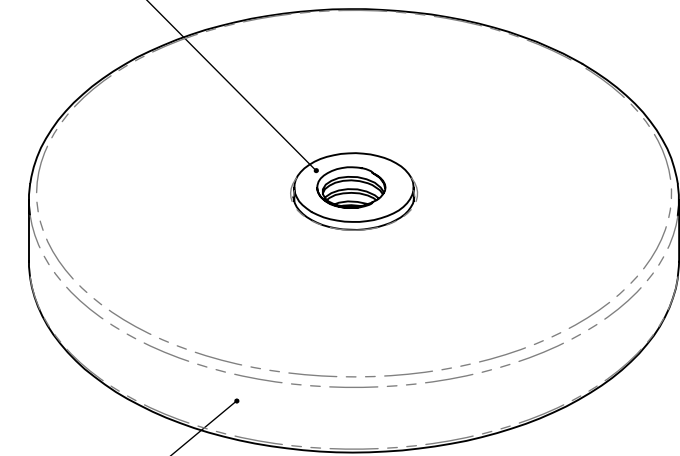
1

REVISIONS				
ZONE	REV.	DESCRIPTION	DATE	APPROVED

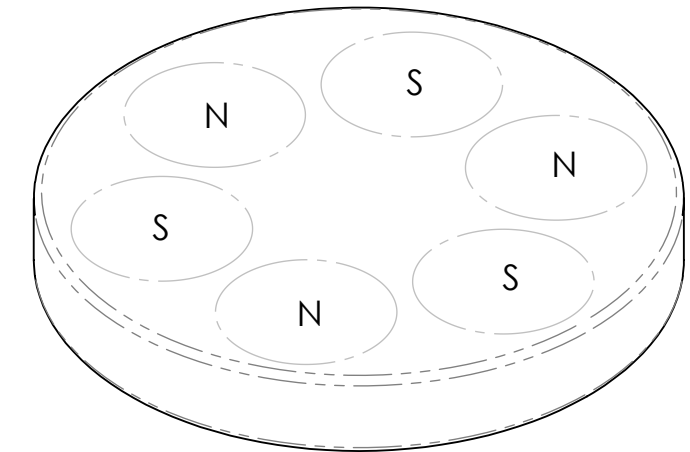
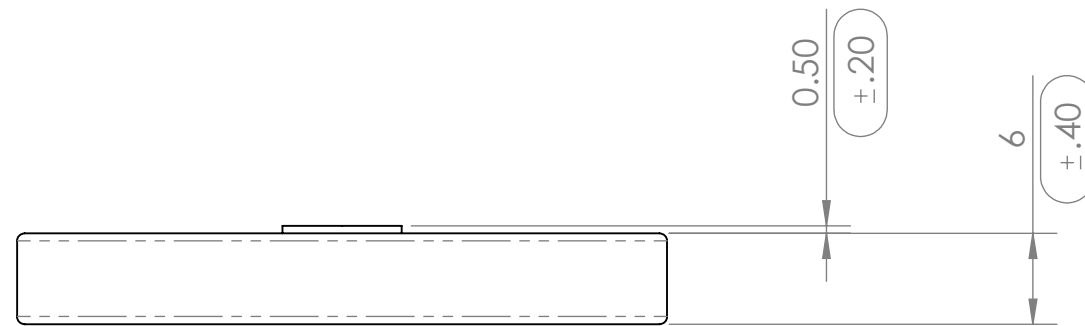
#8-32 FEMALE THREADED HOLE  
 THREAD DEPTH 3.81mm



ZINC PLATED  
 FEMALE THREADED POST



BLACK RUBBER HOUSING



6 INTERNAL MAGNETS  
 ALTERNATING POLARITY

CONDITIONS

- PART IS TO BE FREE OF SCRATCHES, DENTS, AND DEFECTS CAUSED DURING PRODUCTION.
- PART IS TO BE FREE OF GREASE, AND DISCOLORATION ON ALL SURFACES.

MAGNETIC PROPERTIES

- MATERIAL: LICENSED NdFeB
- GRADE: N35
- COATING: Ni-Cu-Ni (NICKEL-COPPER-NICKEL)
- MAGNETIZED: YES
- RESIDUAL INDUCTION (Br): 11.7-12.2 KOe
- COERCIVE FORCE (Hcb):  $\geq 10.9$  KOe
- INTRINSIC COERCIVE FORCE (Hci):  $\geq 12.0$  KOe
- MAXIMUM ENERGY PRODUCT (BHmax): 33-36 MGOe
- MAXIMUM OPERATIONAL TEMPERATURE: 80C / 176F

PROPRIETARY AND CONFIDENTIAL

THE INFORMATION CONTAINED IN THIS DRAWING IS THE SOLE PROPERTY OF AMAZING MAGNETS LLC. ANY REPRODUCTION IN PART OR AS A WHOLE WITHOUT THE WRITTEN PERMISSION OF AMAZING MAGNETS LLC IS PROHIBITED.

CAGE CODE  
**4R1R7**

UNLESS OTHERWISE SPECIFIED

DIMENSIONS ARE IN MILLIMETERS  
 TOLERANCES:  
 FRACTIONAL  $\pm 1/64$   
 ANGULAR: MACH  $\pm 1^\circ$   
 TWO PLACE DECIMAL  $\pm .12$   
 THREE PLACE DECIMAL  $\pm .08$

DO NOT SCALE DRAWING

NAME	DATE
DRAWN L.Billsoly	2/15/2019
CHECKED S.Witte	2/15/2019

COMMENTS:



TITLE: **WHEELF1700-N35**

SIZE	DWG. NO.	REV
<b>B</b>	WHEELF1700-N35-SPECS	<b>0</b>

4

3

2

1