

4

3

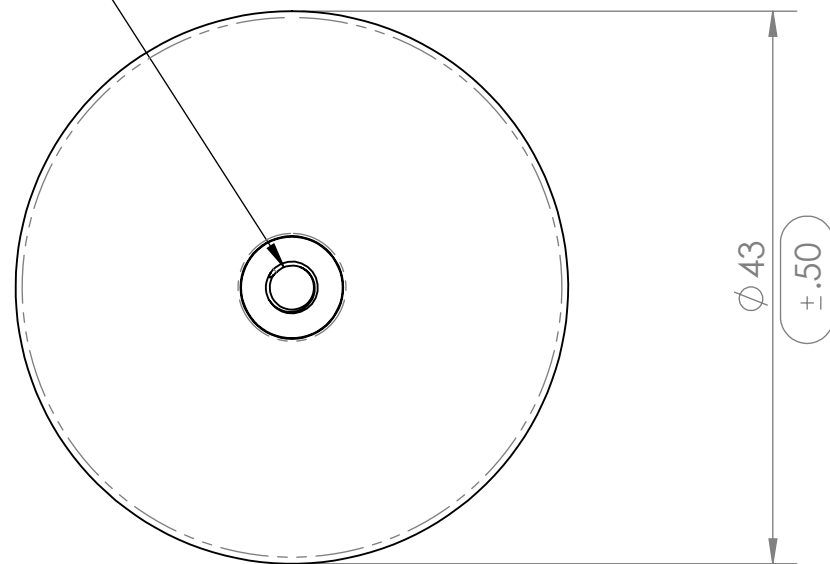
2

1

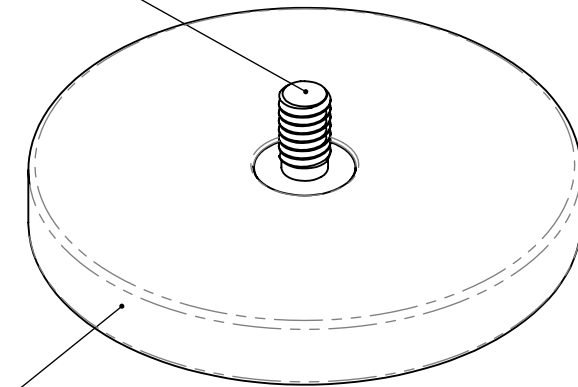
REVISIONS

ZONE	REV.	DESCRIPTION	DATE	APPROVED
------	------	-------------	------	----------

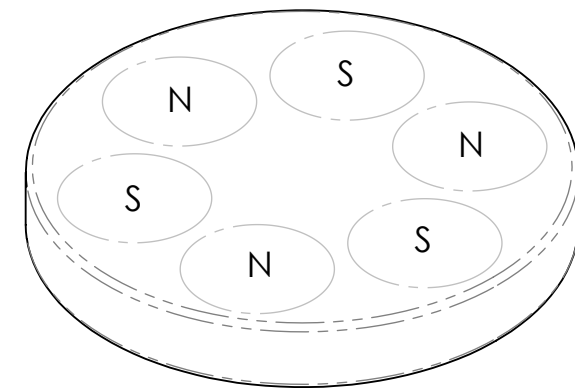
#8-32 MALE THREADED POST



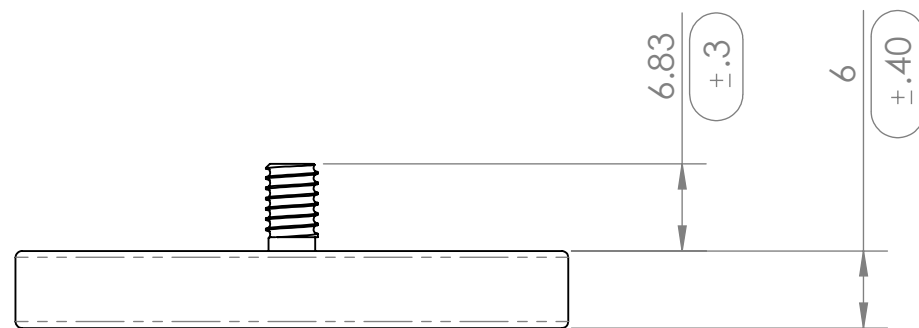
ZINC PLATED MALE THREADED STUD



BLACK RUBBER HOUSING



6 INTERNAL MAGNETS ALTERNATING POLARITY



CONDITIONS

MAGNETIC PROPERTIES

- PART IS TO BE FREE OF SCRATCHES, DENTS, AND DEFECTS CAUSED DURING PRODUCTION.
- PART IS TO BE FREE OF GREASE, AND DISCOLORATION ON ALL SURFACES.

- MATERIAL: LICENSED NdFeB
- GRADE: N35
- COATING: Ni-Cu-Ni (NICKEL-COPPER-NICKEL)
- MAGNETIZED: YES
- RESIDUAL INDUCTION (Br): 11.7-12.2 KOe
- COERCIVE FORCE (Hcb): ≥10.9 KOe
- INTRINSIC COERCIVE FORCE (Hci): ≥12.0 KOe
- MAXIMUM ENERGY PRODUCT (BHmax): 33-36 MGOe
- MAXIMUM OPERATIONAL TEMPERATURE: 80C / 176F

PROPRIETARY AND CONFIDENTIAL

THE INFORMATION CONTAINED IN THIS DRAWING IS THE SOLE PROPERTY OF AMAZING MAGNETS LLC. ANY REPRODUCTION IN PART OR AS A WHOLE WITHOUT THE WRITTEN PERMISSION OF AMAZING MAGNETS LLC IS PROHIBITED.

CAGE CODE  
**4R1R7**

UNLESS OTHERWISE SPECIFIED

DIMENSIONS ARE IN MILLIMETERS  
TOLERANCES:  
FRACTIONAL ± 1/64  
ANGULAR: MACH ± 1°  
TWO PLACE DECIMAL ± .12  
THREE PLACE DECIMAL ± .08

DO NOT SCALE DRAWING

NAME	DATE
DRAWN L.Billsoly	2/15/2019
CHECKED S.Witte	2/15/2019

COMMENTS:



TITLE: WHEELM1700-N35

SIZE	DWG. NO.	REV
<b>B</b>	WHEELM1700-N35-SPECS	<b>0</b>

4

3

2

1

B

B

A

A